



BDO Atrio

AuditorsAccountantsAdvisors

FINRAPP

Voorbeeldfile gemeente

‘trendberekening’

Geachte,

Op de volgende pagina's vindt u een voorstelling van de mogelijkheden van FINRAPP voor een gemeente.

Dit bestand bevat enkel de trendberekening. Voor de berekening van het budget en de vergelijking met de reële cijfers verwijzen we naar de tweede voorbeeldfile (FINRAPP gemeente budget)

INHOUDSOPGAVE

Evolutie van de rekeningen in EUR	1
Evolutie van de rekeningen – grafieken.....	14
Trendberekening – tabellen.....	27
Trendberekening – grafieken – lineaire trend en voortschrijdend gemiddelde.....	40
Trendberekening - tabellen – trend met seizoencorrectie.....	66
Trendberekening – grafieken – trend met seizoencorrectie	80



BDO Atrio
AuditorsAccountantsAdvisors

Evolutie van de rekeningen
bedragen in €

70 tot 75 klasse
60 tot 65 klasse

kwartaalbasis
maandbasis
jaarbasis

periode 2005 - 2009

Evolutie 70 klasse

Evolutie 70 klasse

kwartaalbasis, bedragen in €

	2005	2006	2007	2008	2009
Q1	209.370	380.337	348.123	1.555.978	0
Q2	3.591.507	3.573.138	7.815.376	8.635.518	0
Q3	14.997.769	9.184.919	10.941.093	9.630.429	0
Q4	8.401.672	13.685.113	9.052.397	8.854.940	0
totaal	27.200.319	26.823.507	28.156.989	28.676.866	0

Evolutie 70 klasse

maandbasis, bedragen in €

	2005	2006	2007	2008	2009
j	51.402	160.137	21.887	42.242	0
f	70.146	70.213	273.849	74.068	0
m	87.823	149.987	52.387	1.439.667	0
a	198.938	96.235	1.766.954	1.126.790	0
m	1.386.818	648.945	2.671.780	6.577.855	0
j	2.005.751	2.827.958	3.376.642	930.873	0
j	3.037.587	2.823.093	3.359.132	3.281.750	0
a	7.746.088	4.187.354	2.959.609	3.111.380	0
s	4.214.094	2.174.472	4.622.352	3.237.299	0
o	2.929.710	7.930.765	3.159.437	2.364.341	0
n	2.864.242	2.393.726	2.305.007	2.309.598	0
d	2.607.721	3.360.622	3.587.954	4.181.001	0
totaal	27.200.319	26.823.507	28.156.989	28.676.866	0

Evolutie 71 klasse

Evolutie 71 klasse

kwartaalbasis, bedragen in €

	2005	2006	2007	2008	2009
Q1	945.662	931.827	943.303	1.441.938	0
Q2	1.162.114	1.079.790	1.261.627	1.877.958	0
Q3	1.160.105	826.686	2.140.242	1.715.017	0
Q4	1.662.895	3.023.460	2.906.465	3.170.352	0
totaal	4.930.775	5.861.762	7.251.638	8.205.266	0

Evolutie 71 klasse

maandbasis, bedragen in €

	2005	2006	2007	2008	2009
j	183.154	220.747	246.324	267.238	0
f	238.774	333.547	357.697	719.815	0
m	523.733	377.534	339.281	454.885	0
a	472.992	357.102	507.417	728.036	0
m	276.808	385.351	410.776	738.851	0
j	412.314	337.337	343.434	411.071	0
j	204.099	119.308	839.897	943.493	0
a	434.594	332.993	789.730	456.631	0
s	521.412	374.384	510.615	314.893	0
o	299.636	570.135	767.214	1.363.478	0
n	411.416	303.839	655.458	283.805	0
d	951.843	2.149.485	1.483.793	1.523.069	0
totaal	4.930.775	5.861.762	7.251.638	8.205.266	0

Evolutie 72 klasse

Evolutie 72 klasse

kwartaalbasis, bedragen in €

	2005	2006	2007	2008	2009
Q1	4.889	6.649	6.799	6.739	0
Q2	7.064	4.987	5.257	5.176	0
Q3	5.264	4.987	5.381	9.408	0
Q4	31.463	3.391	4.158	28.977	0
totaal	48.680	20.013	21.595	50.300	0

Evolutie 72 klasse

maandbasis, bedragen in €

	2005	2006	2007	2008	2009
j	0	1.662	3.391	3.437	0
f	0	0	1.695	1.736	0
m	4.889	4.987	1.713	1.566	0
a	1.630	1.662	1.853	1.705	0
m	1.630	1.662	1.700	1.734	0
j	3.805	1.662	1.703	1.738	0
j	1.630	0	1.702	1.800	0
a	1.630	3.324	1.978	5.841	0
s	2.005	1.662	1.702	1.768	0
o	1.662	1.695	1.702	6.384	0
n	1.662	1.695	1.702	1.958	0
d	28.138	0	754	20.635	0
totaal	48.680	20.013	21.595	50.300	0

Evolutie 73 klasse

Evolutie 73 klasse

kwartaalbasis, bedragen in €

	2005	2006	2007	2008	2009
Q1	3.551.287	11.198.978	13.025.769	12.784.243	0
Q2	4.708.228	2.035.271	2.144.546	3.245.422	0
Q3	5.726.246	2.165.540	1.675.422	2.194.876	0
Q4	6.107.131	4.140.639	3.756.996	2.865.609	0
totaal	20.092.893	19.540.429	20.602.733	21.090.150	0

Evolutie 73 klasse

maandbasis, bedragen in €

	2005	2006	2007	2008	2009
j	9.960	290.331	387.566	407.375	0
f	125.828	10.600.036	12.195.128	11.968.137	0
m	3.415.499	308.611	443.076	408.731	0
a	422.518	277.813	820.435	1.627.986	0
m	3.216.612	574.985	411.368	1.175.438	0
j	1.069.098	1.182.473	912.742	441.998	0
j	387.178	259.256	481.750	570.938	0
a	4.476.269	1.062.602	868.460	703.310	0
s	862.800	843.683	325.212	920.628	0
o	266.918	422.784	442.258	542.342	0
n	2.285.729	556.009	364.103	296.965	0
d	3.554.484	3.161.846	2.950.635	2.026.302	0
totaal	20.092.893	19.540.429	20.602.733	21.090.150	0

Evolutie 74 klasse

Evolutie 74 klasse

kwartaalbasis, bedragen in €

	2005	2006	2007	2008	2009
Q1	396.852	9.937	10.140	14.049	0
Q2	50.999	410.043	419.117	455.375	0
Q3	102.633	112.652	99.440	30.405	0
Q4	159.514	169.068	166.890	150.533	0
totaal	709.998	701.699	695.588	650.361	0

Evolutie 74 klasse

maandbasis, bedragen in €

	2005	2006	2007	2008	2009
j	2.103	2.325	3.210	3.060	0
f	3.698	3.800	1.107	4.998	0
m	391.051	3.812	5.823	5.990	0
a	42.846	401.470	403.986	402.884	0
m	3.431	3.835	10.339	7.917	0
j	4.722	4.738	4.792	44.573	0
j	77.492	78.049	13.613	9.748	0
a	4.101	3.655	44.327	13.632	0
s	21.040	30.948	41.500	7.025	0
o	63.028	24.746	24.942	80.835	0
n	3.765	45.432	5.826	6.824	0
d	92.721	98.890	136.123	62.875	0
totaal	709.998	701.699	695.588	650.361	0

Evolutie 75 klasse

Evolutie 75 klasse

kwartaalbasis, bedragen in €

	2005	2006	2007	2008	2009
Q1	644.325	40.156	122.323	163.976	0
Q2	1.309.491	419.349	911.540	594.056	0
Q3	2.075.984	631.975	453.246	567.734	0
Q4	2.016.767	1.246.350	1.396.370	1.607.666	0
totaal	6.046.568	2.337.829	2.883.478	2.933.432	0

Evolutie 75 klasse

maandbasis, bedragen in €

	2005	2006	2007	2008	2009
j	4.802	6.733	30.277	56.693	0
f	6.361	4.956	56.794	66.362	0
m	633.163	28.468	35.251	40.920	0
a	668.314	6.679	41.187	59.543	0
m	379.345	13.832	37.956	64.952	0
j	261.832	398.837	832.397	469.561	0
j	1.233.600	560.784	376.756	430.624	0
a	821.294	44.726	43.427	103.111	0
s	21.090	26.464	33.062	34.000	0
o	12.219	32.756	74.019	81.191	0
n	23.746	27.947	71.725	118.241	0
d	1.980.803	1.185.646	1.250.625	1.408.234	0
totaal	6.046.568	2.337.829	2.883.478	2.933.432	0

Evolutie 60 klasse

Evolutie 60 klasse

kwartaalbasis, bedragen in €

	2005	2006	2007	2008	2009
Q1	126.612	102.249	178.017	265.736	0
Q2	226.481	326.401	262.325	396.486	0
Q3	259.341	166.568	381.252	290.091	0
Q4	375.766	418.159	463.380	458.512	0
totaal	988.201	1.013.378	1.284.975	1.410.825	0

Evolutie 60 klasse

maandbasis, bedragen in €

	2005	2006	2007	2008	2009
j	123	195	12.967	24.374	0
f	9.439	11.340	55.455	86.333	0
m	117.050	90.714	109.594	155.029	0
a	89.023	75.302	90.661	152.290	0
m	88.053	103.301	100.682	96.873	0
j	49.405	147.798	70.982	147.323	0
j	36.169	24.855	95.446	94.785	0
a	149.392	80.496	112.510	71.103	0
s	73.781	61.218	173.297	124.202	0
o	43.230	115.975	164.974	90.926	0
n	87.214	111.659	103.623	76.434	0
d	245.322	190.525	194.783	291.152	0
totaal	988.201	1.013.378	1.284.975	1.410.825	0

Evolutie 61 klasse

Evolutie 61 klasse

kwartaalbasis, bedragen in €

	2005	2006	2007	2008	2009
Q1	867.902	1.447.422	1.095.451	1.939.431	0
Q2	2.078.949	1.773.132	2.128.865	1.681.131	0
Q3	1.612.397	1.377.365	1.912.941	2.218.125	0
Q4	2.467.143	2.646.663	2.274.915	2.465.267	0
totaal	7.026.390	7.244.581	7.412.172	8.303.954	0

Evolutie 61 klasse

maandbasis, bedragen in €

	2005	2006	2007	2008	2009
j	64.073	164.736	42.857	445.166	0
f	172.928	252.740	543.368	675.064	0
m	630.901	1.029.945	509.226	819.201	0
a	806.403	418.207	896.333	576.413	0
m	587.897	579.301	480.361	473.085	0
j	684.649	775.623	752.171	631.633	0
j	327.671	338.997	633.510	988.828	0
a	859.462	589.731	774.780	364.373	0
s	425.264	448.636	504.651	864.924	0
o	724.335	825.165	880.746	565.022	0
n	478.516	625.277	662.110	486.363	0
d	1.264.291	1.196.220	732.060	1.413.881	0
totaal	7.026.390	7.244.581	7.412.172	8.303.954	0

Evolutie 62 klasse

Evolutie 62 klasse

kwartaalbasis, bedragen in €

	2005	2006	2007	2008	2009
Q1	5.069.568	5.545.430	5.819.339	5.965.381	0
Q2	5.137.844	5.740.349	5.812.911	5.963.994	0
Q3	4.643.110	4.703.542	4.803.137	5.235.368	0
Q4	4.773.404	4.744.629	4.802.212	5.130.679	0
totaal	19.623.925	20.733.950	21.237.598	22.295.422	0

Evolutie 62 klasse

maandbasis, bedragen in €

	2005	2006	2007	2008	2009
j	2.137.747	2.400.504	2.567.928	2.614.972	0
f	1.262.064	1.569.466	1.633.121	1.662.053	0
m	1.669.756	1.575.460	1.618.290	1.688.356	0
a	2.219.735	2.202.277	2.490.332	2.560.940	0
m	1.438.698	1.851.961	1.584.533	1.671.638	0
j	1.479.411	1.686.111	1.738.046	1.731.416	0
j	1.634.484	1.575.322	1.608.689	1.823.367	0
a	1.491.969	1.574.613	1.529.574	1.641.030	0
s	1.516.657	1.553.607	1.664.875	1.770.971	0
o	1.517.722	1.620.543	1.675.423	1.716.648	0
n	2.026.040	2.171.656	2.158.797	2.336.802	0
d	1.229.642	952.431	967.991	1.077.229	0
totaal	19.623.925	20.733.950	21.237.598	22.295.422	0

Evolutie 63 klasse

Evolutie 63 klasse

kwartaalbasis, bedragen in €

	2005	2006	2007	2008	2009
Q1	2.189.175	4.890.033	3.746.972	4.962.635	0
Q2	3.876.595	2.514.190	3.897.133	4.050.229	0
Q3	5.315.043	3.179.315	3.275.899	4.277.947	0
Q4	2.888.713	4.135.613	3.303.761	3.157.827	0
totaal	14.269.526	14.719.151	14.223.766	16.448.638	0

Evolutie 63 klasse

maandbasis, bedragen in €

	2005	2006	2007	2008	2009
j	1.122.244	1.627.780	1.223.048	2.021.308	0
f	493.712	838.760	982.791	1.228.537	0
m	573.218	2.423.493	1.541.133	1.712.790	0
a	2.031.008	714.549	1.495.309	1.023.074	0
m	853.273	706.375	1.085.692	1.608.223	0
j	992.313	1.093.266	1.316.132	1.418.932	0
j	3.226.646	1.893.477	1.178.549	1.606.836	0
a	1.266.119	737.033	1.249.678	1.467.628	0
s	822.278	548.805	847.673	1.203.482	0
o	253.412	1.598.248	857.871	672.376	0
n	410.895	875.389	998.276	222.574	0
d	2.224.406	1.661.976	1.447.615	2.262.877	0
totaal	14.269.526	14.719.151	14.223.766	16.448.638	0

Evolutie 64 klasse

Evolutie 64 klasse

kwartaalbasis, bedragen in €

	2005	2006	2007	2008	2009
Q1	1.029.712	673.252	1.153.640	1.070.872	0
Q2	1.321.597	1.641.272	1.125.621	1.177.782	0
Q3	1.233.035	1.134.268	1.093.731	1.132.859	0
Q4	1.670.316	1.918.584	2.181.422	2.350.091	0
totaal	5.254.659	5.367.376	5.554.414	5.731.604	0

Evolutie 64 klasse

maandbasis, bedragen in €

	2005	2006	2007	2008	2009
j	0	150.406	183.749	118.846	0
f	274.787	243.019	241.027	292.280	0
m	754.924	279.827	728.864	659.747	0
a	430.612	732.859	360.559	384.343	0
m	469.499	349.094	366.637	396.710	0
j	421.485	559.320	398.425	396.729	0
j	597.622	584.755	504.789	573.223	0
a	358.899	241.243	347.273	297.539	0
s	276.514	308.270	241.669	262.097	0
o	465.842	508.678	502.627	734.031	0
n	233.666	240.828	289.443	285.601	0
d	970.808	1.169.078	1.389.352	1.330.458	0
totaal	5.254.659	5.367.376	5.554.414	5.731.604	0

Evolutie 65 klasse

Evolutie 65 klasse

kwartaalbasis, bedragen in €

	2005	2006	2007	2008	2009
Q1	375.014	300.465	400.419	389.210	0
Q2	546.885	660.150	699.917	594.876	0
Q3	669.188	583.715	628.956	711.302	0
Q4	969.449	1.045.720	1.287.617	1.434.883	0
totaal	2.560.537	2.590.050	3.016.908	3.130.271	0

Evolutie 65 klasse

maandbasis, bedragen in €

	2005	2006	2007	2008	2009
j	11	75.498	100.873	76.518	0
f	192.029	126.746	196.937	156.862	0
m	182.974	98.222	102.609	155.829	0
a	146.203	200.873	286.244	311.591	0
m	239.395	111.699	130.492	139.942	0
j	161.287	347.578	283.182	143.342	0
j	276.117	332.248	335.668	470.700	0
a	273.042	130.073	176.772	137.227	0
s	120.029	121.394	116.515	103.375	0
o	206.711	239.645	238.926	368.722	0
n	118.773	116.402	158.637	136.756	0
d	643.966	689.673	890.054	929.405	0
totaal	2.560.537	2.590.050	3.016.908	3.130.271	0



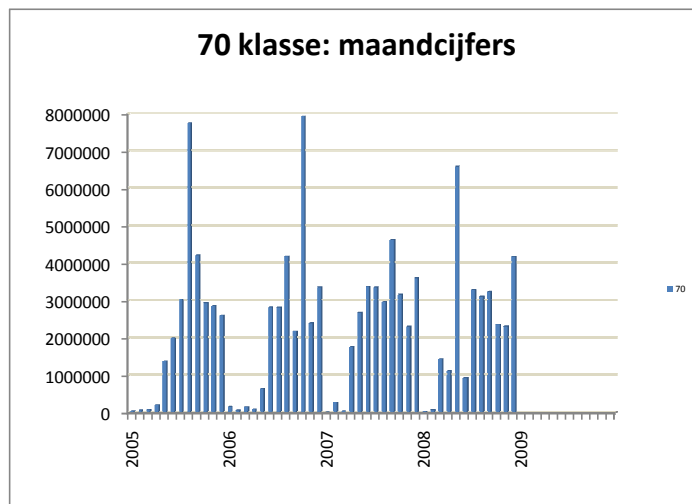
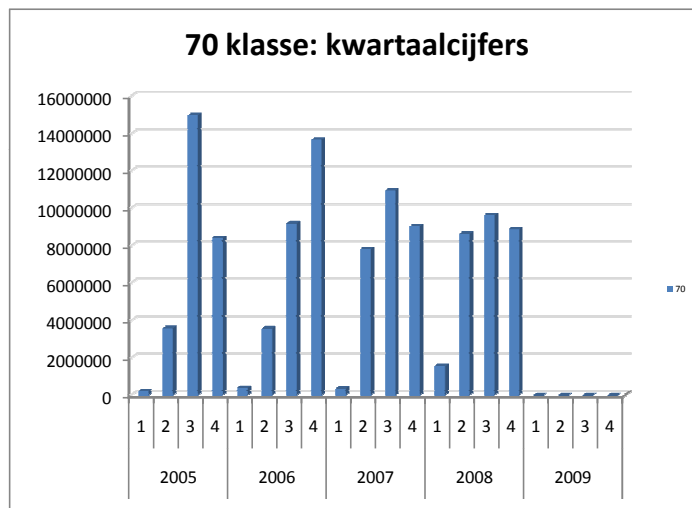
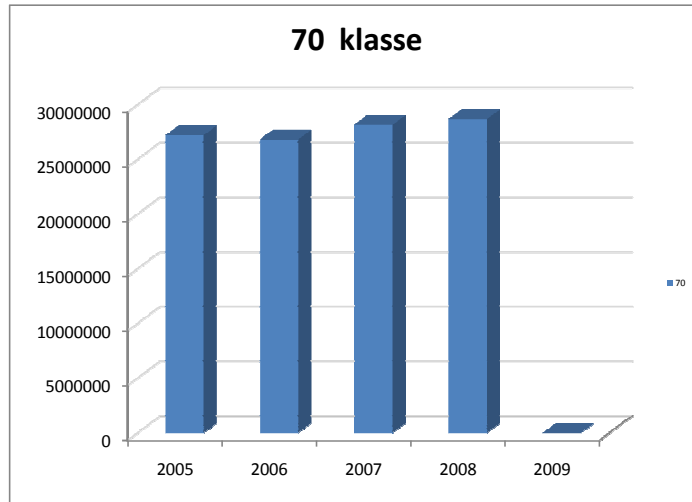
BDO Atrio
AuditorsAccountantsAdvisors

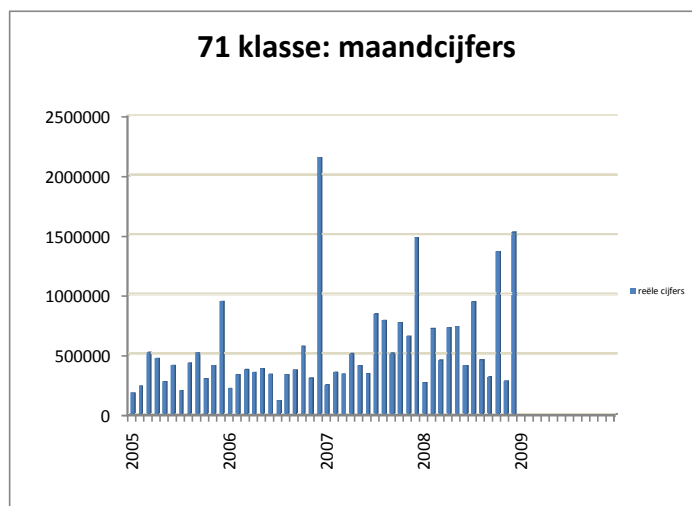
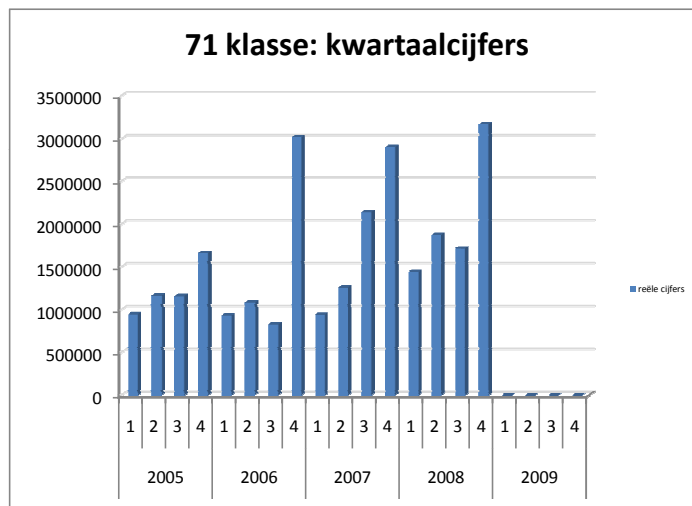
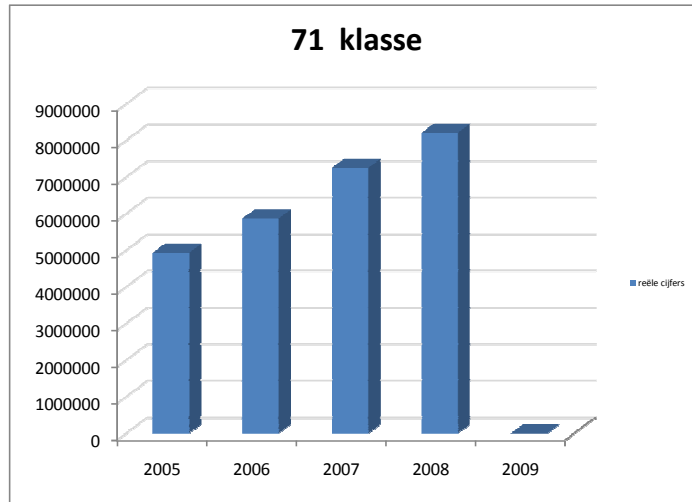
Evolutie van de rekeningen
grafieken

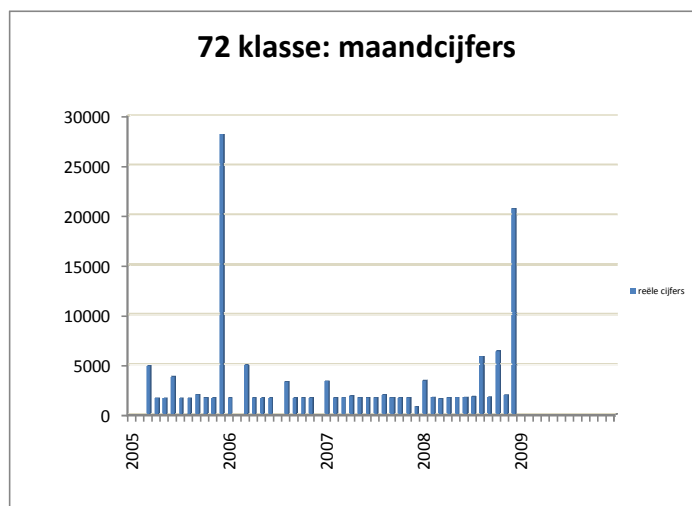
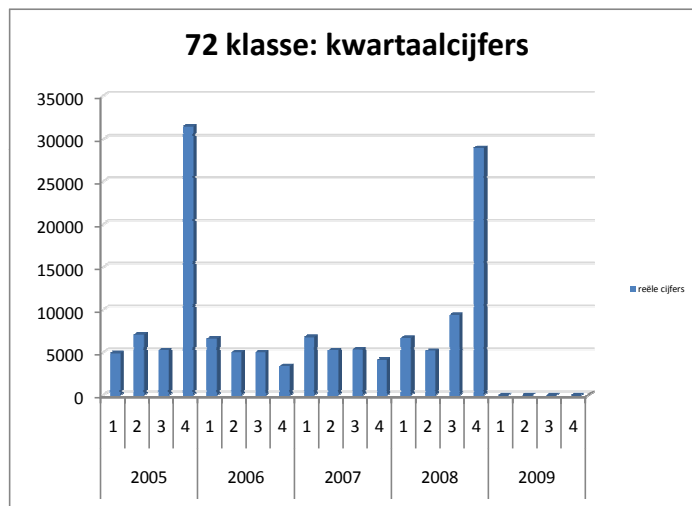
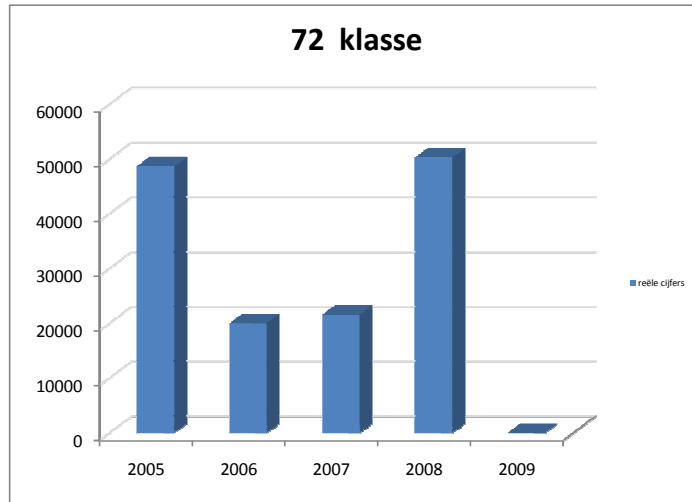
70 tot 75 klasse
60 tot 65 klasse

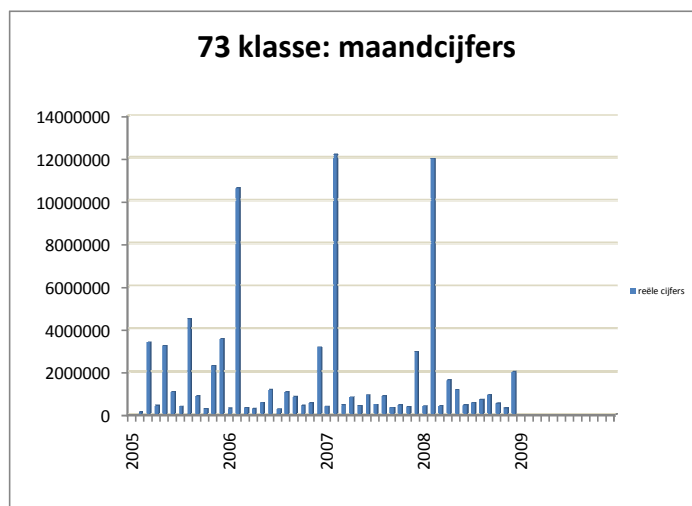
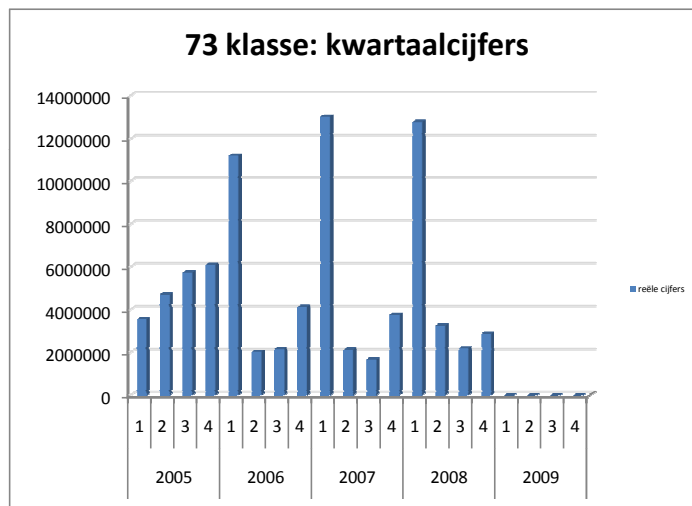
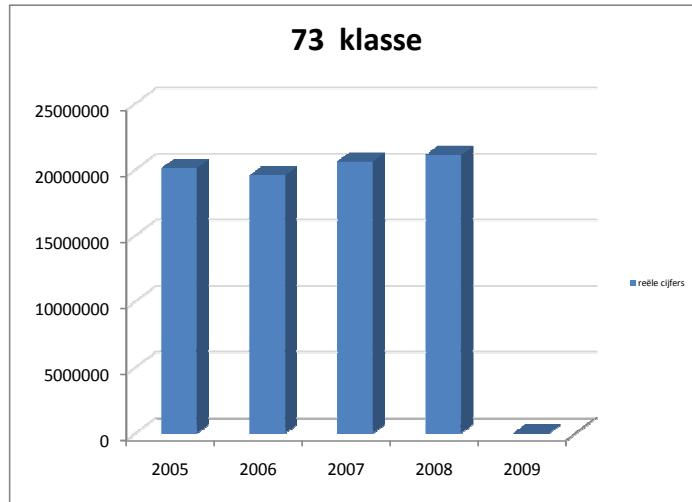
kwartaalbasis
maandbasis
jaarbasis

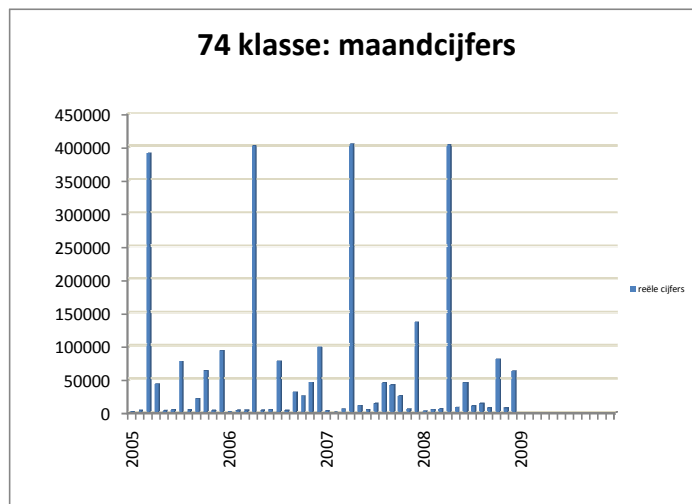
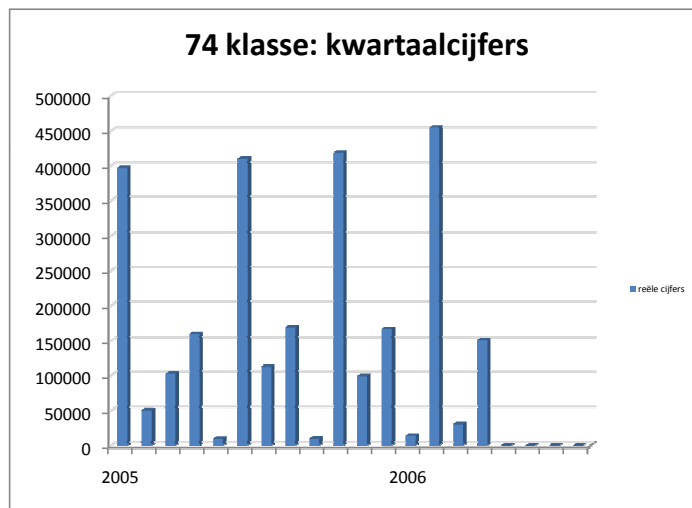
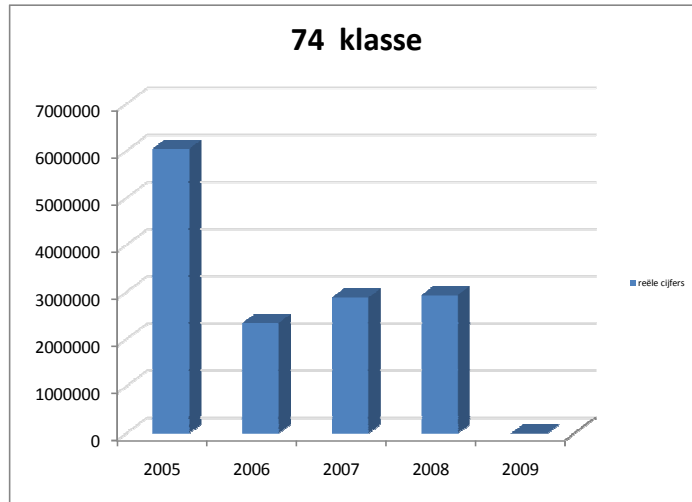
periode 2005 - 2009

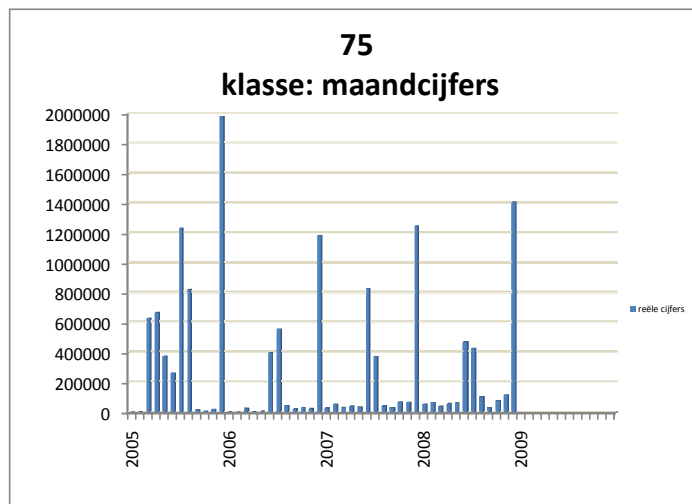
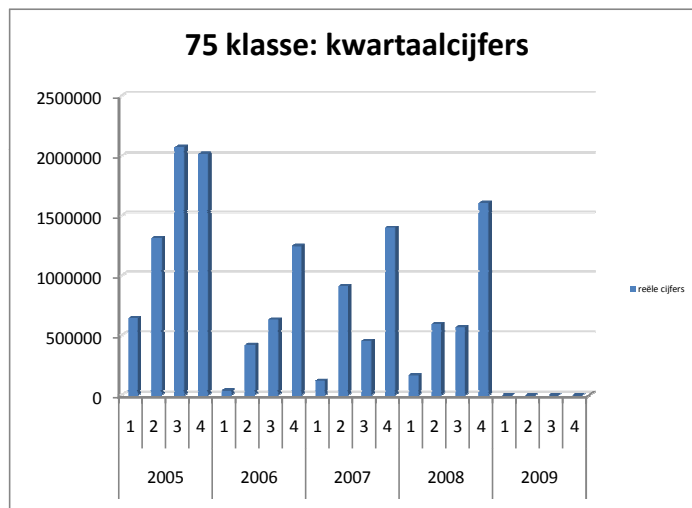
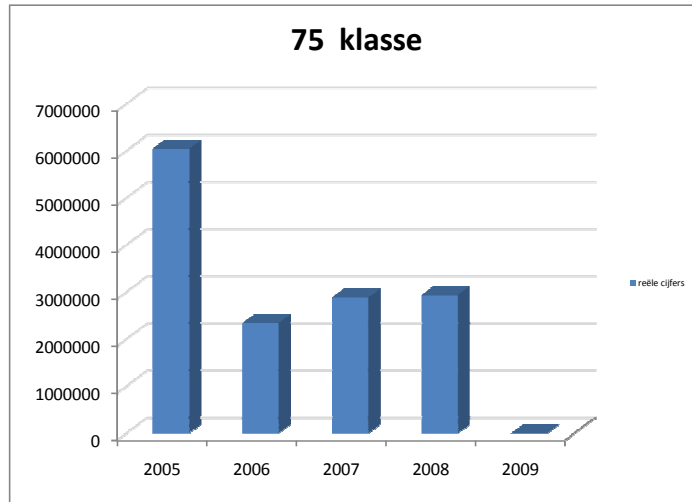




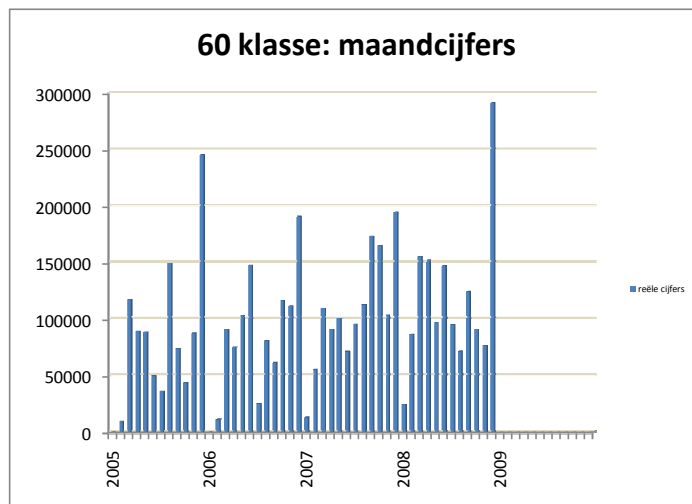
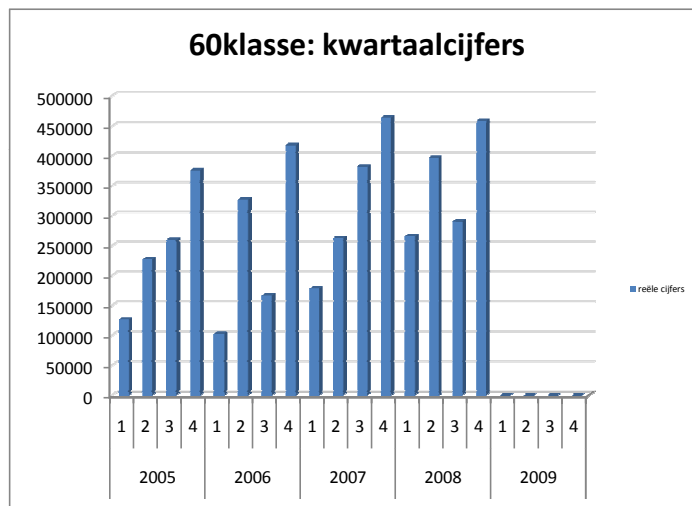
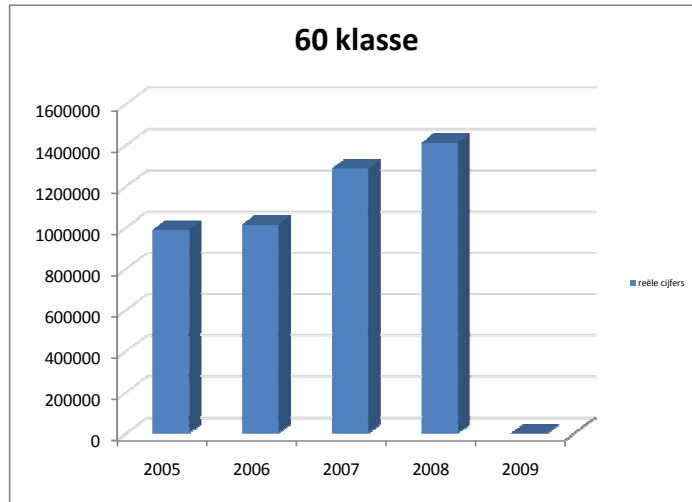


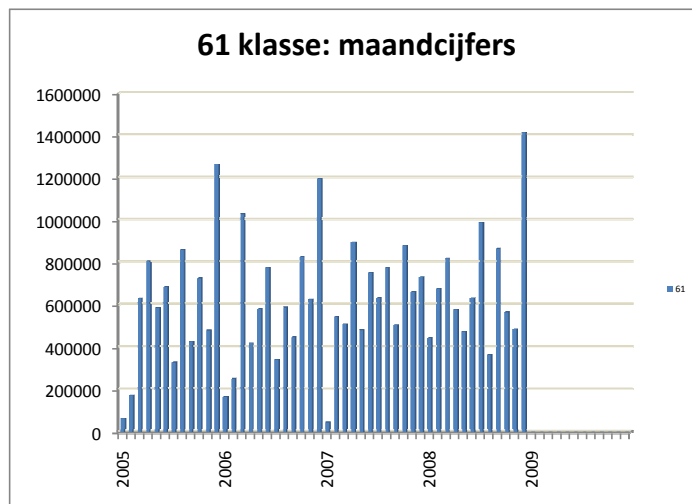
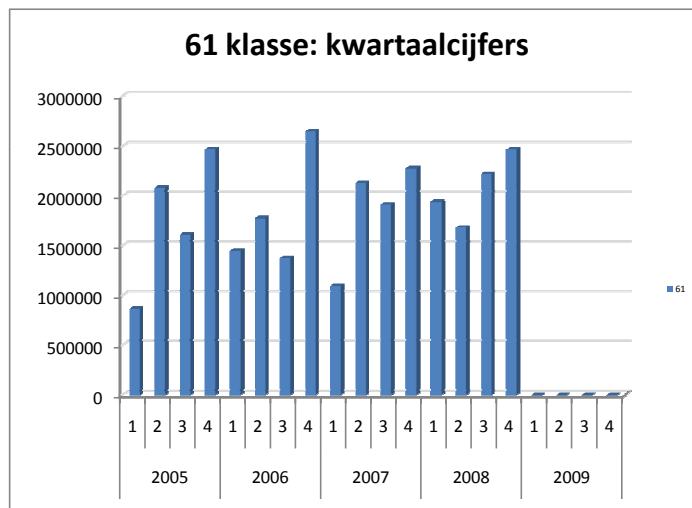
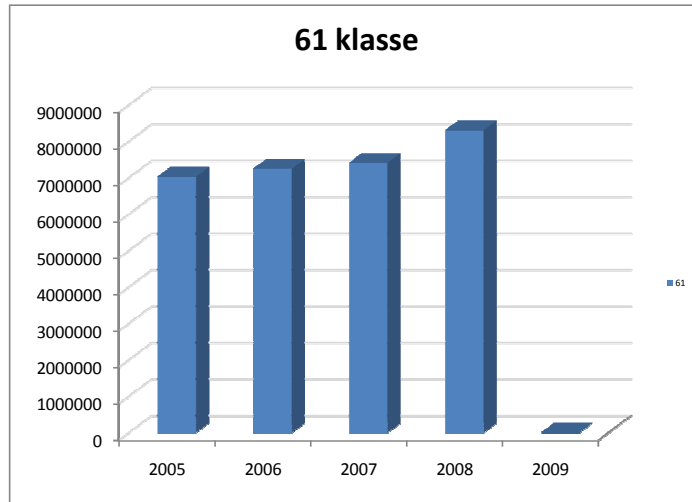


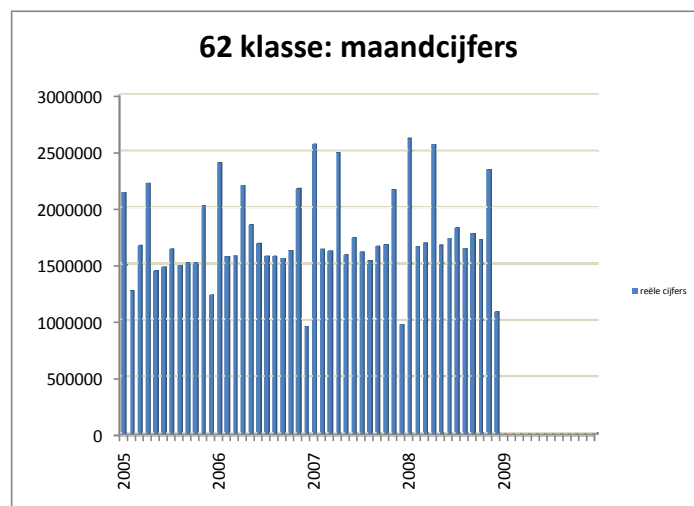
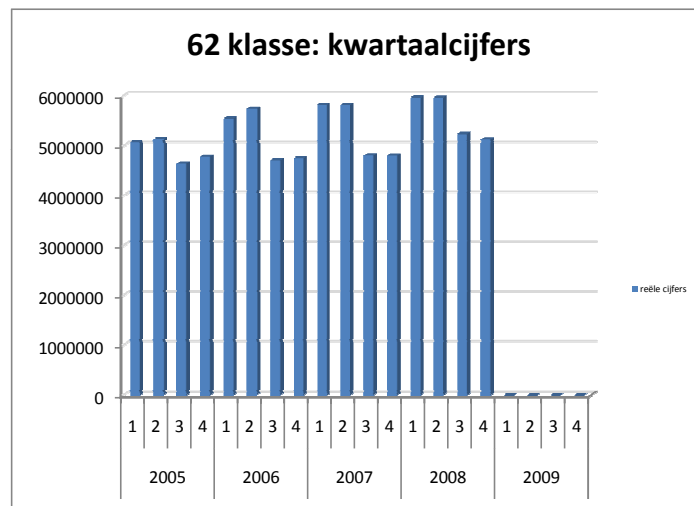
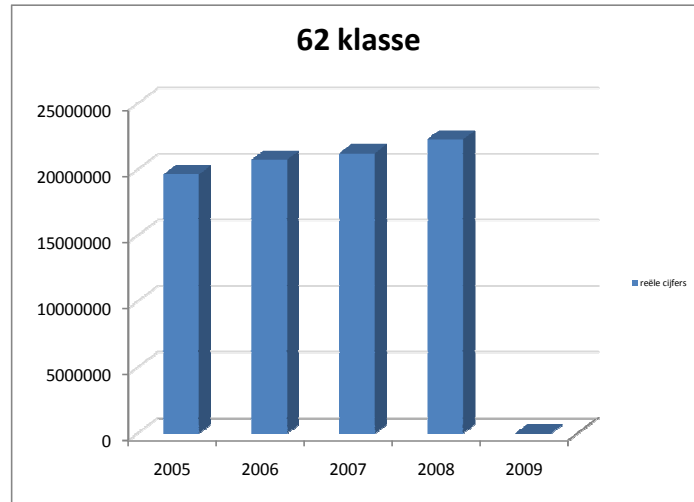


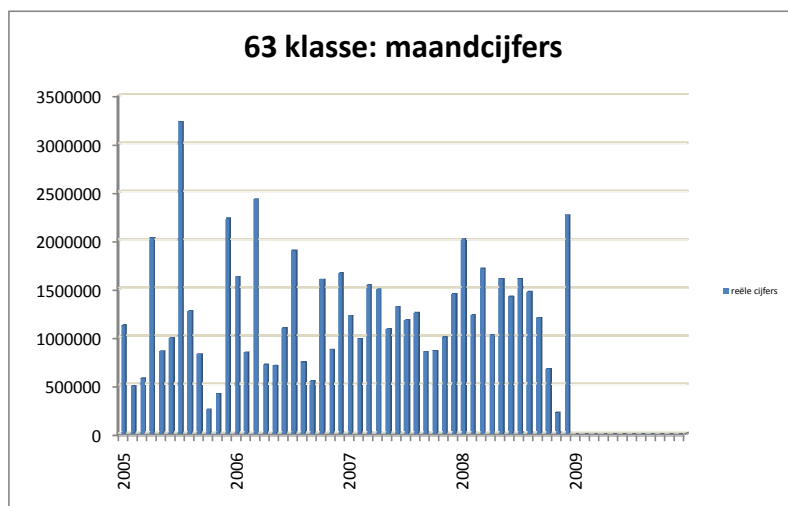
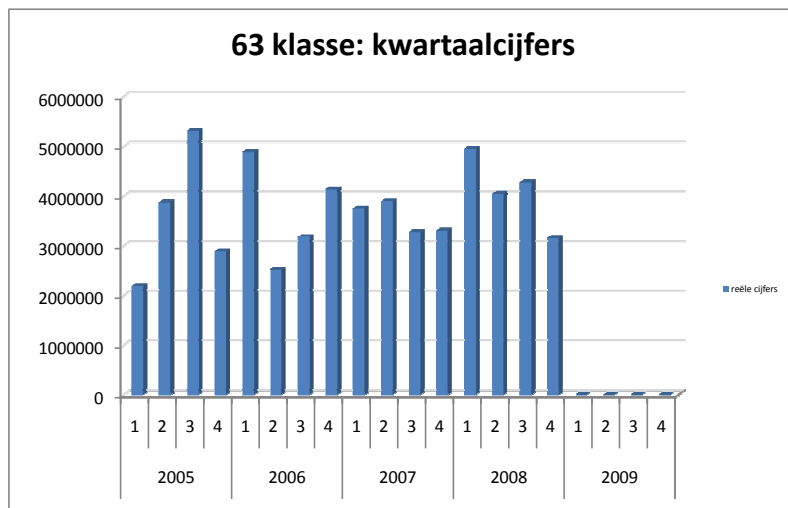
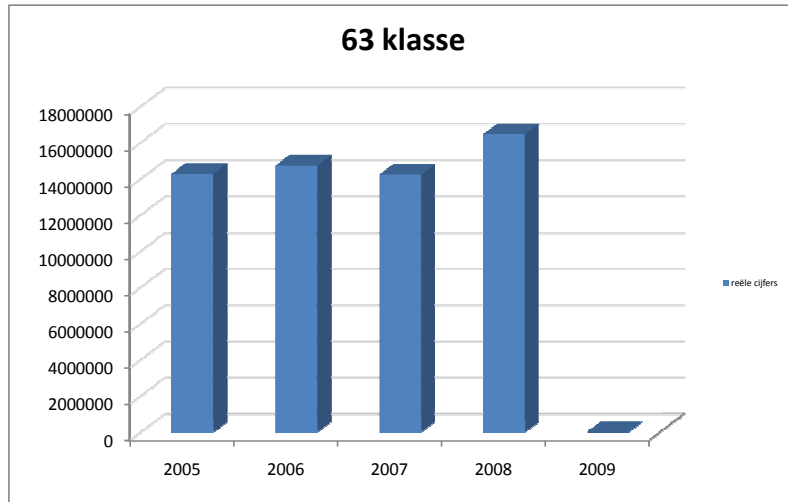


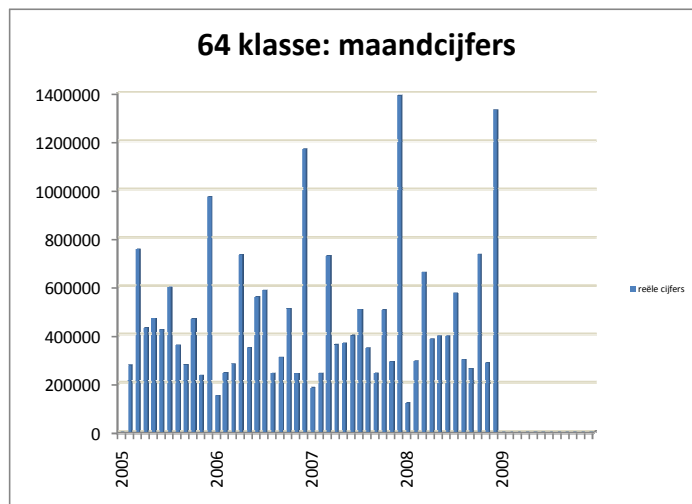
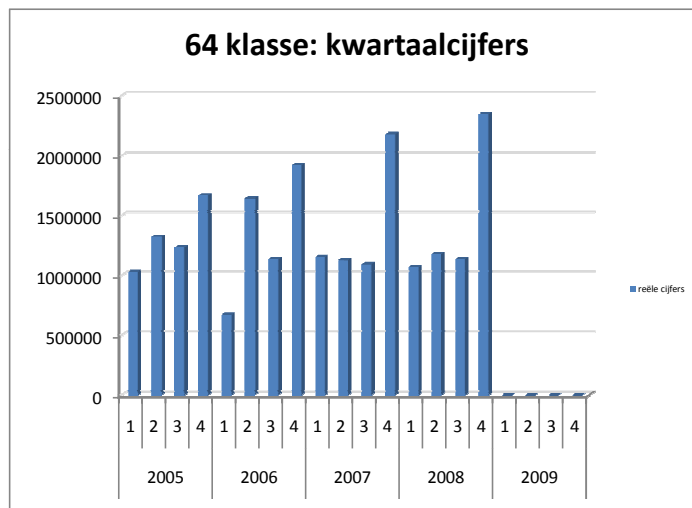
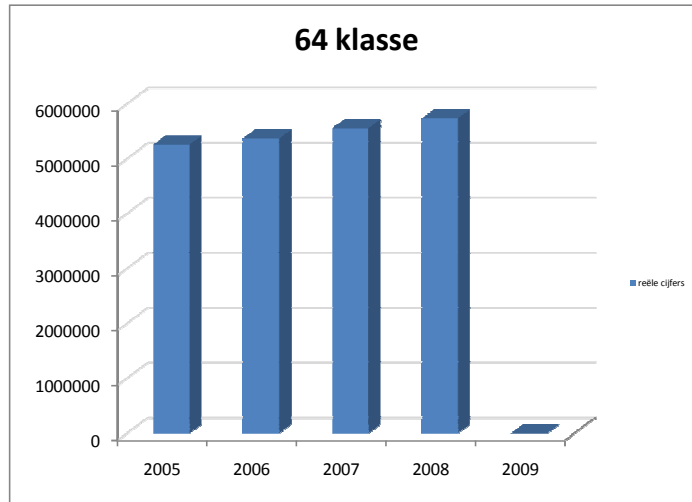
evolutie 60 klasse

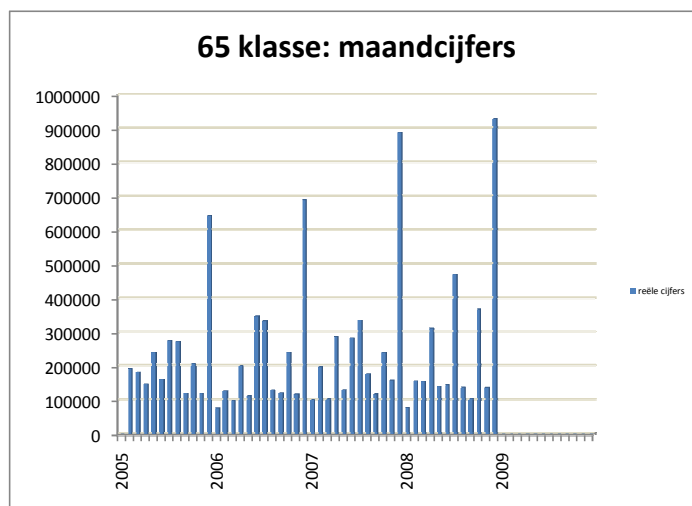
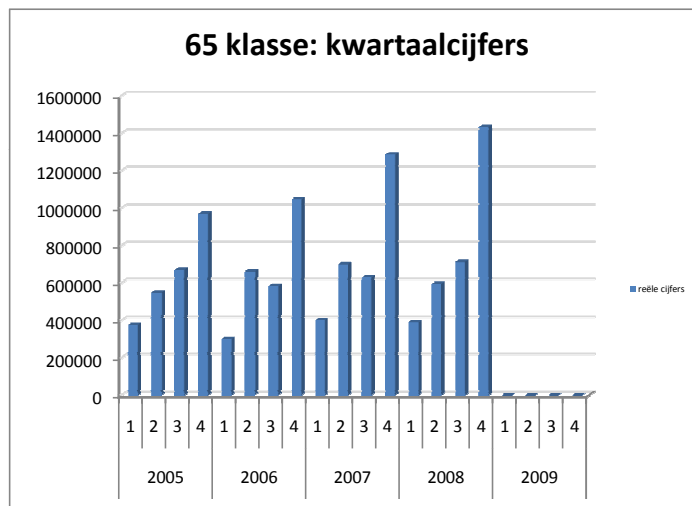
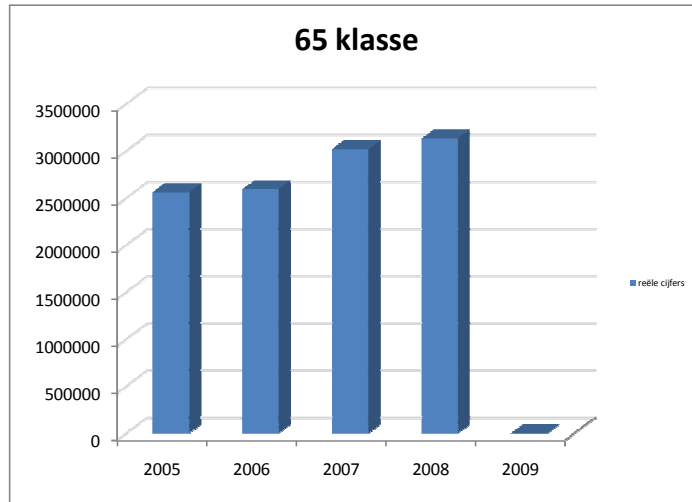














BDO Atrio
AuditorsAccountantsAdvisors

TRENDBEREKENING

TABELLEN

Lineaire trend
Voortschrijdend gemiddelde

periode 2008 - 2009

Deze tabellen geven de onderliggende trend weer. In deze tabellen worden seizoensinvloeden uitgevlakt. De tabellen kunnen best samen met de grafieken geïnterpreteerd worden

evolutie 70 klasse

2008

	reële cijfers	trend (lineair)	VG 6 maand	VG 12 maand
j	42.242	2.637.293	2.779.433	2.348.112
f	74.068	2.663.513	2.298.510	2.331.464
m	1.439.667	2.689.734	1.768.062	2.447.070
a	1.126.790	2.715.955	1.429.288	2.393.723
m	6.577.855	2.742.175	2.141.429	2.719.230
j	930.873	2.768.396	1.698.583	2.515.416
j	3.281.750	2.794.617	2.238.501	2.508.967
a	3.111.380	2.820.837	2.744.719	2.521.615
s	3.237.299	2.847.058	3.044.325	2.406.194
o	2.364.341	2.873.278	3.250.583	2.339.936
n	2.309.598	2.899.499	2.539.207	2.340.318
d	4.181.001	2.925.720	3.080.895	2.389.739

2009

	reële cijfers	trend (lineair)	VG 6 maand	VG 12 maand
j	0	2.951.940		
f	0	2.978.161		
m	0	3.004.381		
a	0	3.030.602		
m	0	3.056.823		
j	0	3.083.043		
j	0	3.109.264		
a	0	3.135.485		
s	0	3.161.705		
o	0	3.187.926		
n	0	3.214.146		
d	0	3.240.367		

evolutie 71 klasse

2008

	reële cijfers	trend (lineair)	VG 6 maand	VG 12 maand
j	267.238	682.775	745.675	606.046
f	719.815	693.648	734.022	636.222
m	454.885	704.521	724.734	645.856
a	728.036	715.394	718.204	664.241
m	738.851	726.267	732.103	691.581
j	411.071	737.140	553.316	697.217
j	943.493	748.013	666.025	705.850
a	456.631	758.886	622.161	678.092
s	314.893	769.759	598.829	661.782
o	1.363.478	780.632	704.736	711.470
n	283.805	791.505	628.895	680.499
d	1.523.069	802.378	814.228	683.772

2009

	reële cijfers	trend (lineair)	VG 6 maand	VG 12 maand
j	0	813.251		
f	0	824.124		
m	0	834.997		
a	0	845.870		
m	0	856.743		
j	0	867.616		
j	0	878.489		
a	0	889.362		
s	0	900.235		
o	0	911.108		
n	0	921.981		
d	0	932.854		

evolutie 72 klasse

2008

	reële cijfers	trend (lineair)	VG 6 maand	VG 12 maand
j	3.437	3.312	1.879	1.803
f	1.736	3.343	1.839	1.807
m	1.566	3.373	1.816	1.795
a	1.705	3.404	1.817	1.782
m	1.734	3.435	1.822	1.785
j	1.738	3.465	1.986	1.788
j	1.800	3.496	1.713	1.796
a	5.841	3.527	2.397	2.118
s	1.768	3.557	2.431	2.123
o	6.384	3.588	3.211	2.514
n	1.958	3.619	3.248	2.535
d	20.635	3.649	6.398	4.192

2009

	reële cijfers	trend (lineair)	VG 6 maand	VG 12 maand
j	0	3.680		
f	0	3.711		
m	0	3.741		
a	0	3.772		
m	0	3.803		
j	0	3.833		
j	0	3.864		
a	0	3.895		
s	0	3.925		
o	0	3.956		
n	0	3.987		
d	0	4.017		

evolutie 73 klasse

2008

	reële cijfers	trend (lineair)	VG 6 maand	VG 12 maand
j	407.375	1.602.531	893.007	1.718.545
f	11.968.137	1.595.190	2.742.953	1.699.629
m	408.731	1.587.849	2.756.873	1.696.767
a	1.627.986	1.580.508	2.954.494	1.764.063
m	1.175.438	1.573.167	3.089.717	1.827.736
j	441.998	1.565.826	2.671.611	1.788.507
j	570.938	1.558.484	2.698.871	1.795.939
a	703.310	1.551.143	821.400	1.782.177
s	920.628	1.543.802	906.716	1.831.795
o	542.342	1.536.461	725.776	1.840.135
n	296.965	1.529.120	579.363	1.834.540
d	2.026.302	1.521.779	843.414	1.757.513

2009

	reële cijfers	trend (lineair)	VG 6 maand	VG 12 maand
j	0	1.514.438		
f	0	1.507.096		
m	0	1.499.755		
a	0	1.492.414		
m	0	1.485.073		
j	0	1.477.732		
j	0	1.470.391		
a	0	1.463.049		
s	0	1.455.708		
o	0	1.448.367		
n	0	1.441.026		
d	0	1.433.685		

evolutie 74 klasse

2008

	reële cijfers	trend (lineair)	VG 6 maand	VG 12 maand
j	3.060	54.322	42.630	57.953
f	4.998	54.072	36.075	58.277
m	5.990	53.822	30.157	58.291
a	402.884	53.571	93.147	58.200
m	7.917	53.321	93.495	57.998
j	44.573	53.071	78.237	61.313
j	9.748	52.820	79.352	60.991
a	13.632	52.570	80.791	58.433
s	7.025	52.320	80.963	55.560
o	80.835	52.069	27.288	60.218
n	6.824	51.819	27.106	60.301
d	62.875	51.569	30.156	54.197

2009

	reële cijfers	trend (lineair)	VG 6 maand	VG 12 maand
j	0	56.325		
f	0	56.074		
m	0	55.824		
a	0	55.574		
m	0	55.323		
j	0	55.073		
j	0	54.823		
a	0	54.572		
s	0	54.322		
o	0	54.072		
n	0	53.822		
d	0	53.571		

evolutie 75 klasse

2008

	reële cijfers	trend (lineair)	VG 6 maand	VG 12 maand
j	56.693	264.349	254.925	242.491
f	66.362	261.828	258.748	243.289
m	40.920	259.307	260.058	243.761
a	59.543	256.786	257.645	245.291
m	64.952	254.265	256.516	247.540
j	469.561	251.744	126.339	217.304
j	430.624	249.223	188.660	221.793
a	103.111	246.702	194.785	226.766
s	34.000	244.181	193.632	226.845
o	81.191	241.660	197.240	227.442
n	118.241	239.139	206.121	231.319
d	1.408.234	236.618	362.567	244.453

2009

	reële cijfers	trend (lineair)	VG 6 maand	VG 12 maand
j	0	234.097		
f	0	231.576		
m	0	229.056		
a	0	226.535		
m	0	224.014		
j	0	221.493		
j	0	218.972		
a	0	216.451		
s	0	213.930		
o	0	211.409		
n	0	208.888		
d	0	206.367		

evolutie 60 klasse

2008

	reële cijfers	trend (lineair)	VG 6 maand	VG 12 maand
j	24.374	118.067	128.927	108.032
f	86.333	119.684	124.564	110.605
m	155.029	121.300	121.519	114.391
a	152.290	122.917	119.405	119.527
m	96.873	124.533	118.280	119.209
j	147.323	126.149	110.370	125.571
j	94.785	127.766	122.106	125.516
a	71.103	129.382	119.567	122.066
s	124.202	130.999	114.429	117.974
o	90.926	132.615	104.202	111.804
n	76.434	134.231	100.796	109.538
d	291.152	135.848	124.767	117.569

2009

	reële cijfers	trend (lineair)	VG 6 maand	VG 12 maand
j	0	137.464		
f	0	139.081		
m	0	140.697		
a	0	142.314		
m	0	143.930		
j	0	145.546		
j	0	147.163		
a	0	148.779		
s	0	150.396		
o	0	152.012		
n	0	153.629		
d	0	155.245		

evolutie 61 klasse

2008

	reële cijfers	trend (lineair)	VG 6 maand	VG 12 maand
j	445.166	689.106	666.585	651.207
f	675.064	694.256	649.966	662.181
m	819.201	699.406	702.391	688.013
a	576.413	704.556	651.669	661.353
m	473.085	709.706	620.165	660.746
j	631.633	714.856	603.427	650.702
j	988.828	720.006	694.037	680.311
a	364.373	725.156	642.256	646.111
s	864.924	730.306	649.876	676.134
o	565.022	735.456	647.978	649.823
n	486.363	740.606	650.191	635.178
d	1.413.881	745.756	780.565	691.996

2009

	reële cijfers	trend (lineair)	VG 6 maand	VG 12 maand
j	0	750.906		
f	0	756.056		
m	0	761.206		
a	0	766.356		
m	0	771.506		
j	0	776.656		
j	0	781.806		
a	0	786.956		
s	0	792.106		
o	0	797.256		
n	0	802.406		
d	0	807.556		

evolutie 62 klasse

2008

	reële cijfers	trend (lineair)	VG 6 maand	VG 12 maand
j	2.614.972	1.780.955	1.768.605	1.773.720
f	1.662.053	1.783.614	1.790.685	1.776.131
m	1.688.356	1.786.272	1.794.599	1.781.970
a	2.560.940	1.788.930	1.942.185	1.787.854
m	1.671.638	1.791.588	1.860.992	1.795.113
j	1.731.416	1.794.247	1.988.229	1.794.560
j	1.823.367	1.796.905	1.856.295	1.812.450
a	1.641.030	1.799.563	1.852.791	1.821.738
s	1.770.971	1.802.221	1.866.560	1.830.580
o	1.716.648	1.804.880	1.725.845	1.834.015
n	2.336.802	1.807.538	1.836.706	1.848.849
d	1.077.229	1.810.196	1.727.674	1.857.952

2009

	reële cijfers	trend (lineair)	VG 6 maand	VG 12 maand
j	0	1.812.855		
f	0	1.815.513		
m	0	1.818.171		
a	0	1.820.829		
m	0	1.823.488		
j	0	1.826.146		
j	0	1.828.804		
a	0	1.831.462		
s	0	1.834.121		
o	0	1.836.779		
n	0	1.839.437		
d	0	1.842.095		

evolutie 63 klasse

2008

	reële cijfers	trend (lineair)	VG 6 maand	VG 12 maand
j	2.021.308	1.280.931	1.237.070	1.251.835
f	1.228.537	1.283.970	1.233.547	1.272.314
m	1.712.790	1.287.010	1.377.733	1.286.619
a	1.023.074	1.290.049	1.405.267	1.247.266
m	1.608.223	1.293.088	1.506.924	1.290.810
j	1.418.932	1.296.128	1.502.144	1.299.377
j	1.606.836	1.299.167	1.433.065	1.335.068
a	1.467.628	1.302.206	1.472.914	1.353.230
s	1.203.482	1.305.246	1.388.029	1.382.881
o	672.376	1.308.285	1.329.580	1.367.423
n	222.574	1.311.324	1.098.638	1.302.781
d	2.262.877	1.314.364	1.239.296	1.370.720

2009

	reële cijfers	trend (lineair)	VG 6 maand	VG 12 maand
j	0	1.317.403		
f	0	1.320.442		
m	0	1.323.482		
a	0	1.326.521		
m	0	1.329.560		
j	0	1.332.600		
j	0	1.335.639		
a	0	1.338.678		
s	0	1.341.718		
o	0	1.344.757		
n	0	1.347.796		
d	0	1.350.836		

evolutie 64 klasse

2008

	reële cijfers	trend (lineair)	VG 6 maand	VG 12 maand
j	118.846	498.322	481.535	457.459
f	292.280	501.674	472.369	461.730
m	659.747	505.026	542.049	455.971
a	384.343	508.379	522.335	457.953
m	396.710	511.731	540.213	460.459
j	396.729	515.083	374.776	460.317
j	573.223	518.436	450.505	466.020
a	297.539	521.788	451.382	461.876
s	262.097	525.140	385.107	463.578
o	734.031	528.493	443.388	482.862
n	285.601	531.845	424.870	482.542
d	1.330.458	535.197	580.492	477.634

2009

	reële cijfers	trend (lineair)	VG 6 maand	VG 12 maand
j	0	538.549		
f	0	541.902		
m	0	545.254		
a	0	548.606		
m	0	551.959		
j	0	555.311		
j	0	558.663		
a	0	562.016		
s	0	565.368		
o	0	568.720		
n	0	572.073		
d	0	575.425		

evolutie 65 klasse

2008

	reële cijfers	trend (lineair)	VG 6 maand	VG 12 maand
j	76.518	274.860	276.237	249.380
f	156.862	278.020	272.919	246.040
m	155.829	281.179	279.471	250.475
a	311.591	284.338	291.582	252.587
m	139.942	287.497	288.466	253.375
j	143.342	290.657	164.014	241.722
j	470.700	293.816	229.711	252.974
a	137.227	296.975	226.439	249.679
s	103.375	300.134	217.696	248.584
o	368.722	303.293	227.218	259.400
n	136.756	306.453	226.687	257.577
d	929.405	309.612	357.698	260.856

2009

	reële cijfers	trend (lineair)	VG 6 maand	VG 12 maand
j	0	312.771		
f	0	315.930		
m	0	319.090		
a	0	322.249		
m	0	325.408		
j	0	328.567		
j	0	331.727		
a	0	334.886		
s	0	338.045		
o	0	341.204		
n	0	344.363		
d	0	347.523		



BDO Atrio
AuditorsAccountantsAdvisors

TRENDBEREKENING

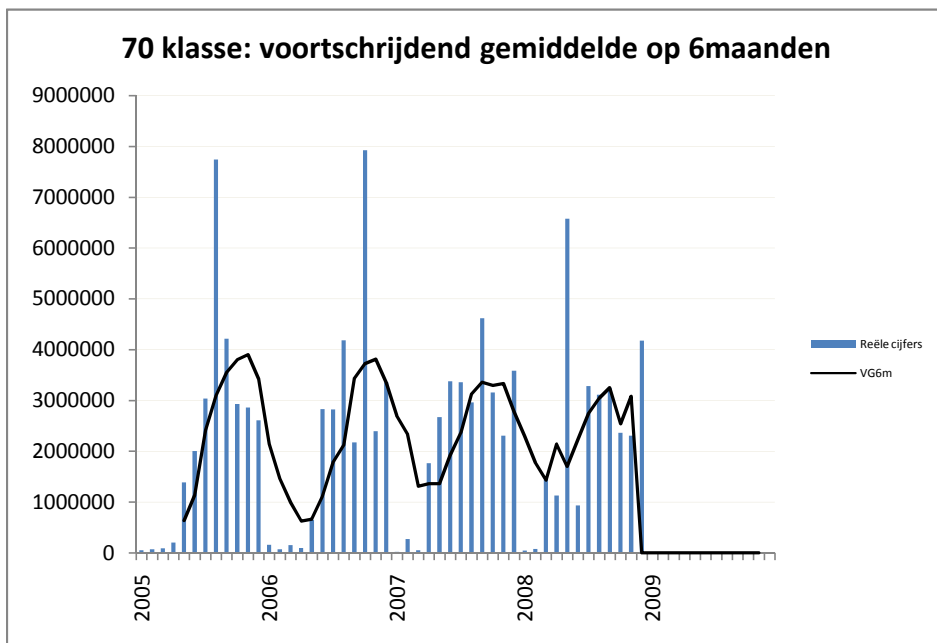
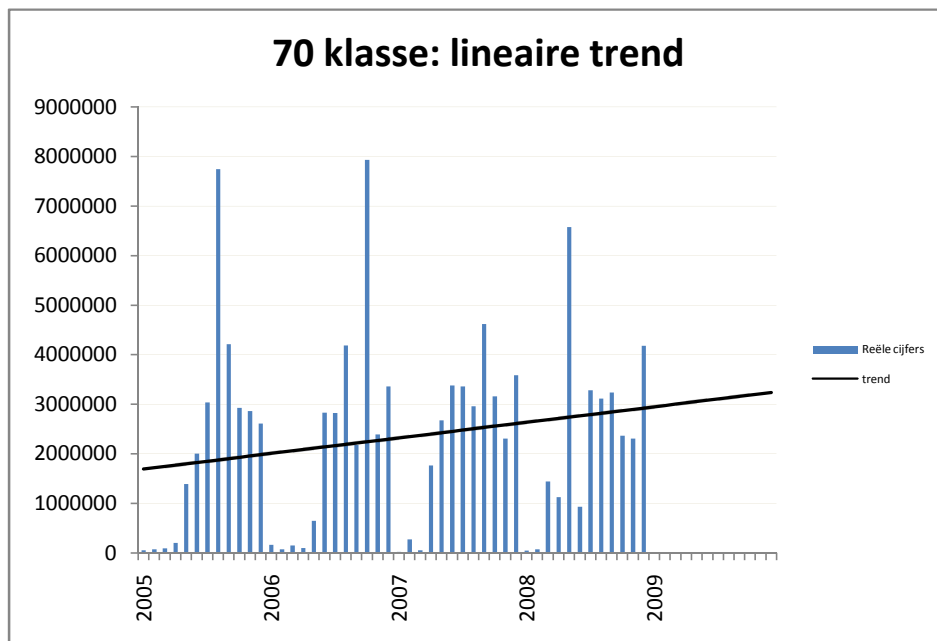
GRAFIEKEN

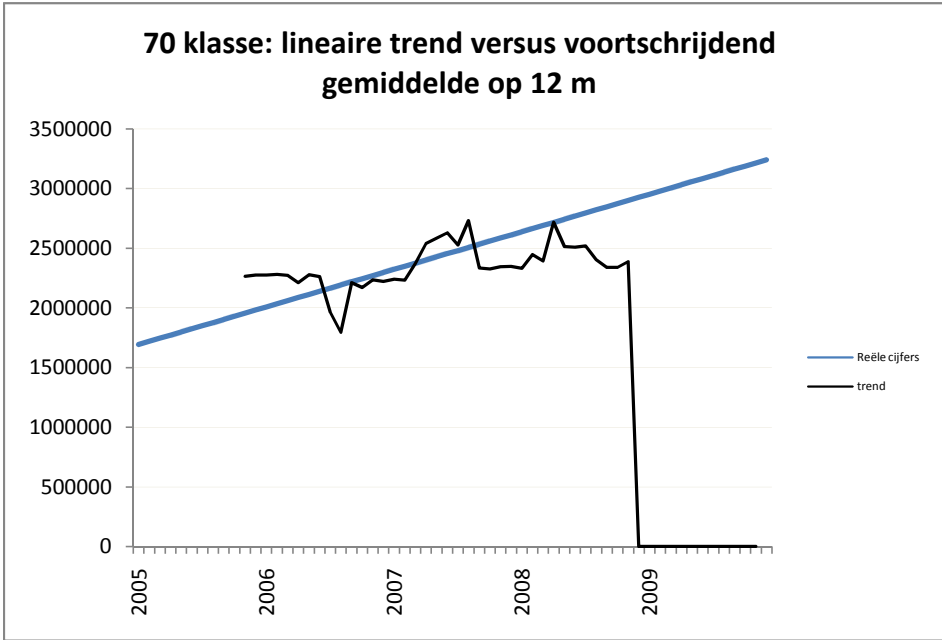
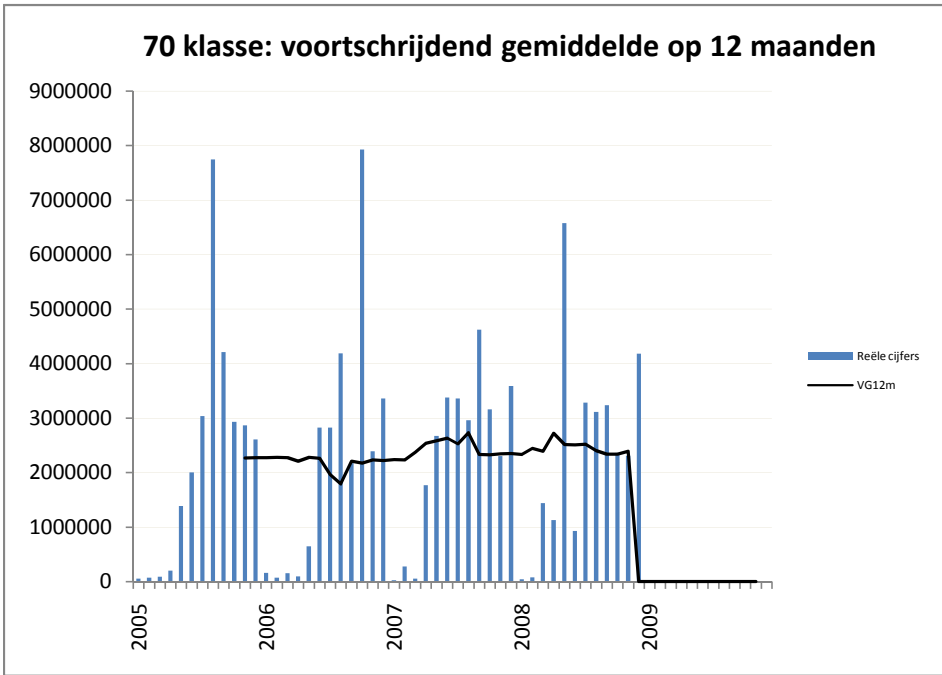
Lineaire trend
Voortschrijdend gemiddelde

periode 2005 - 2009

gemiddelde maandelijkse stijging in €:

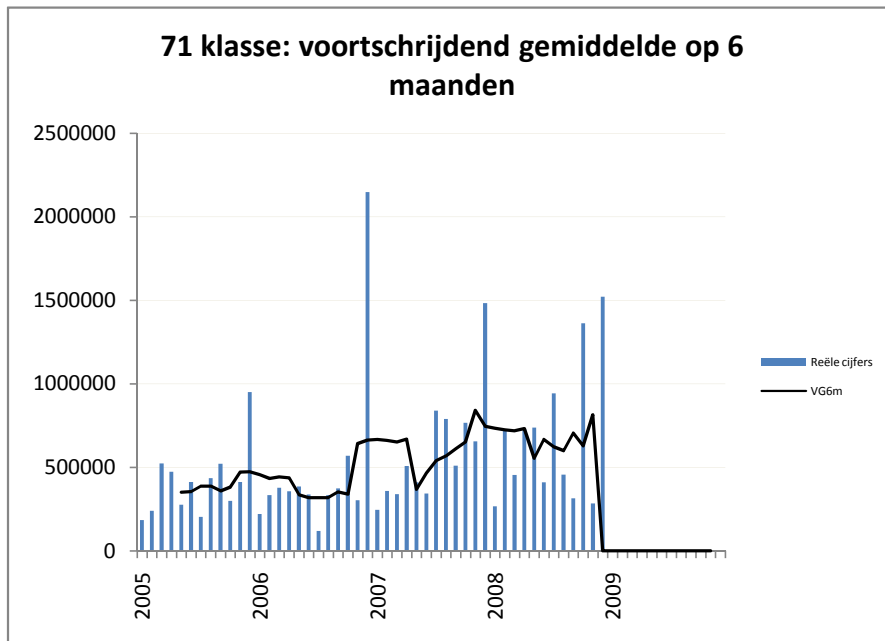
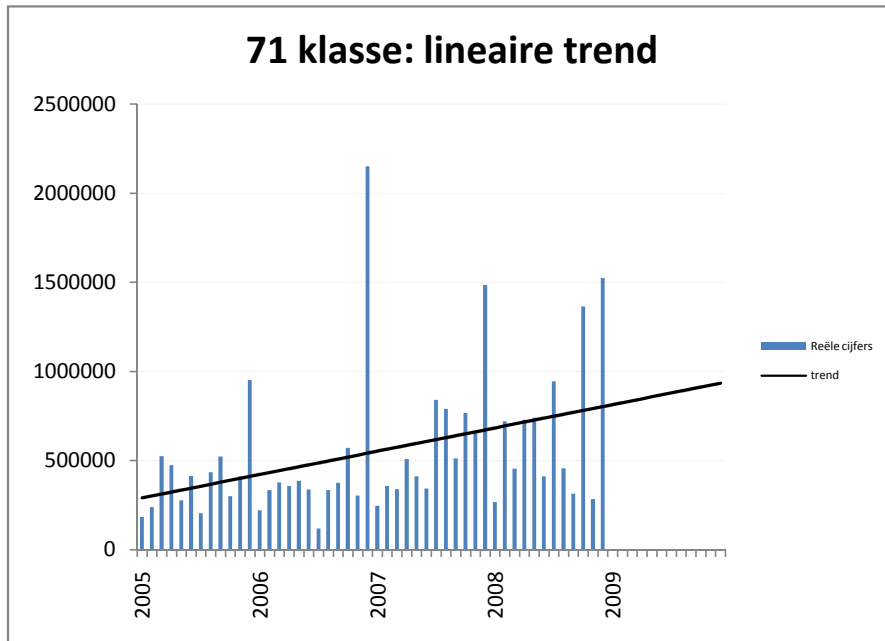
26.220,62

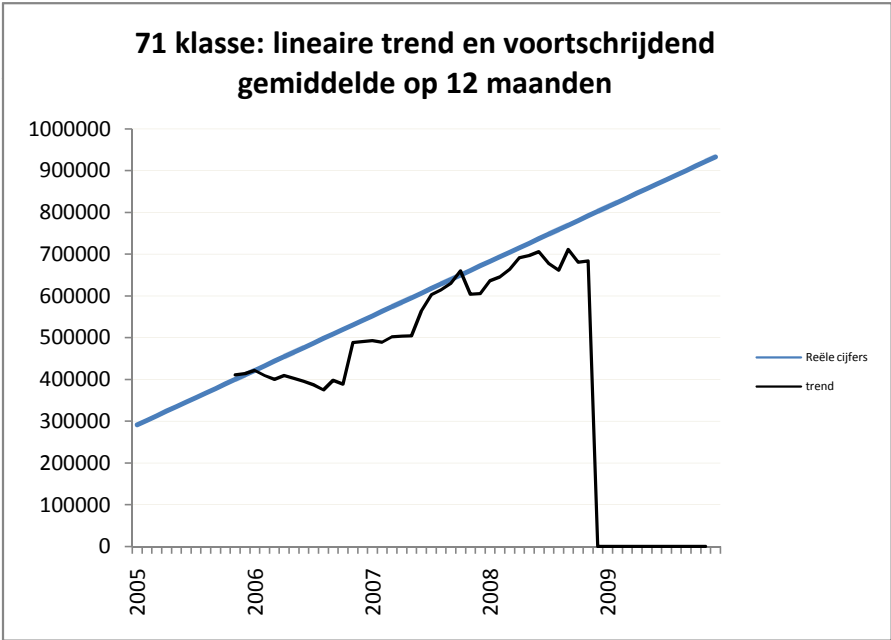
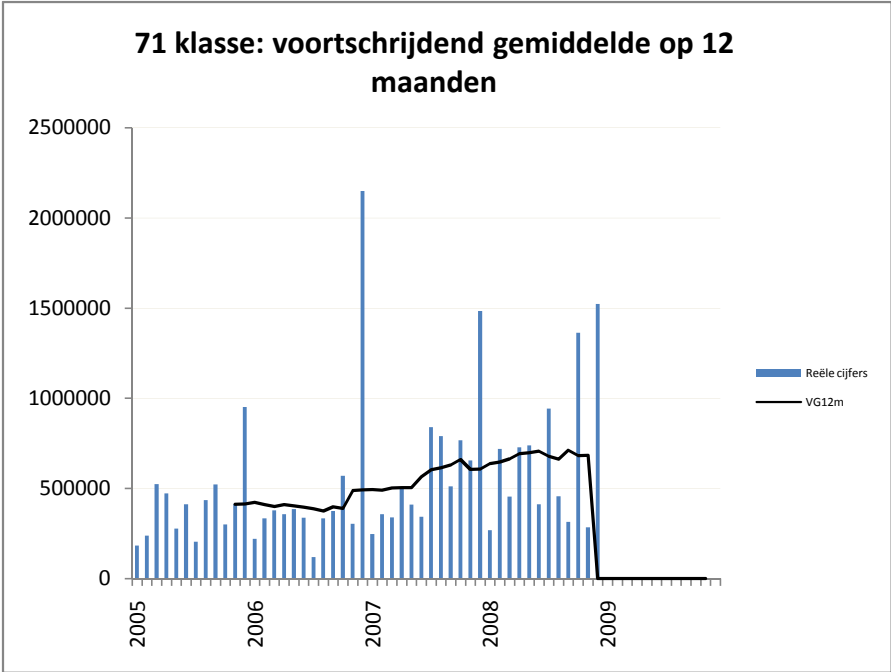




gemiddelde maandelijkse stijging in €:

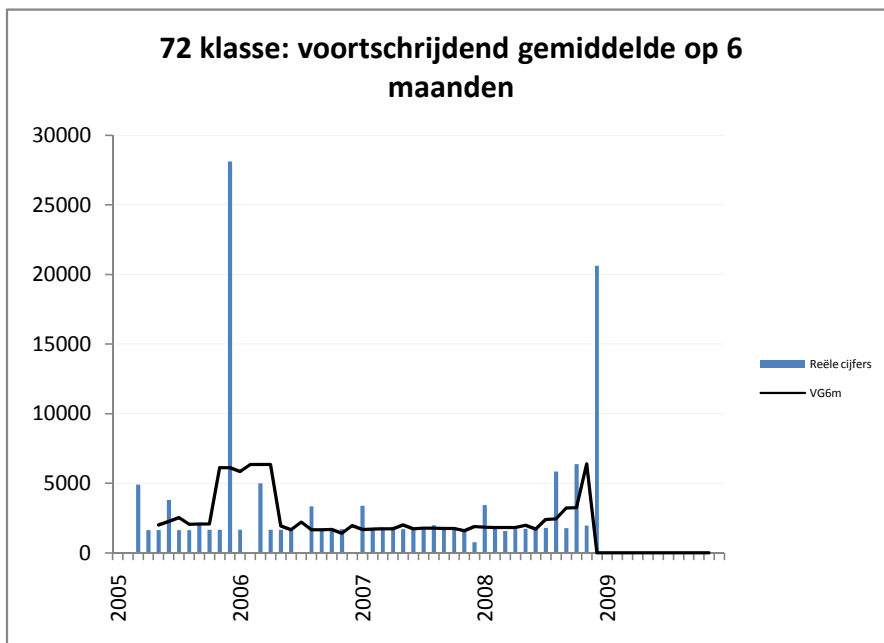
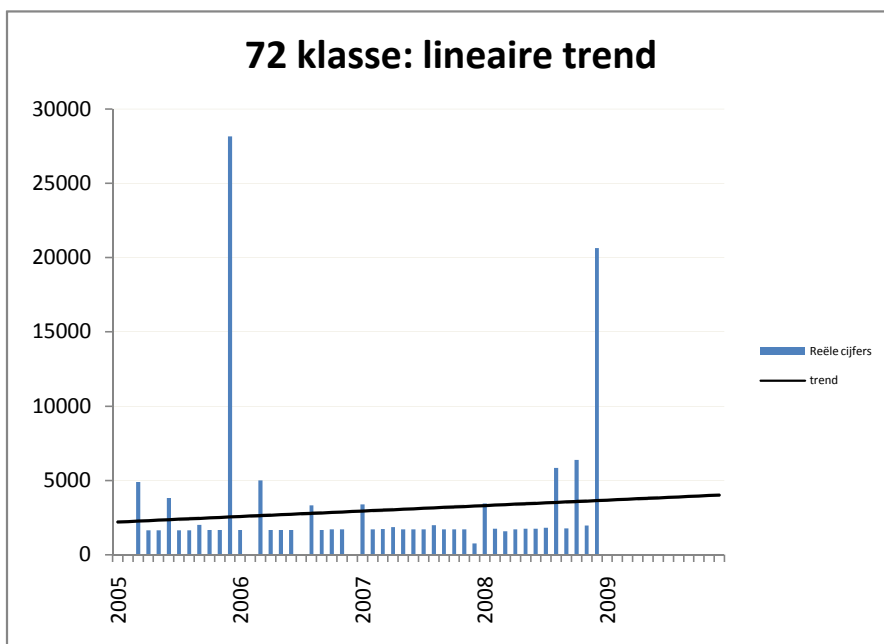
10.872,96

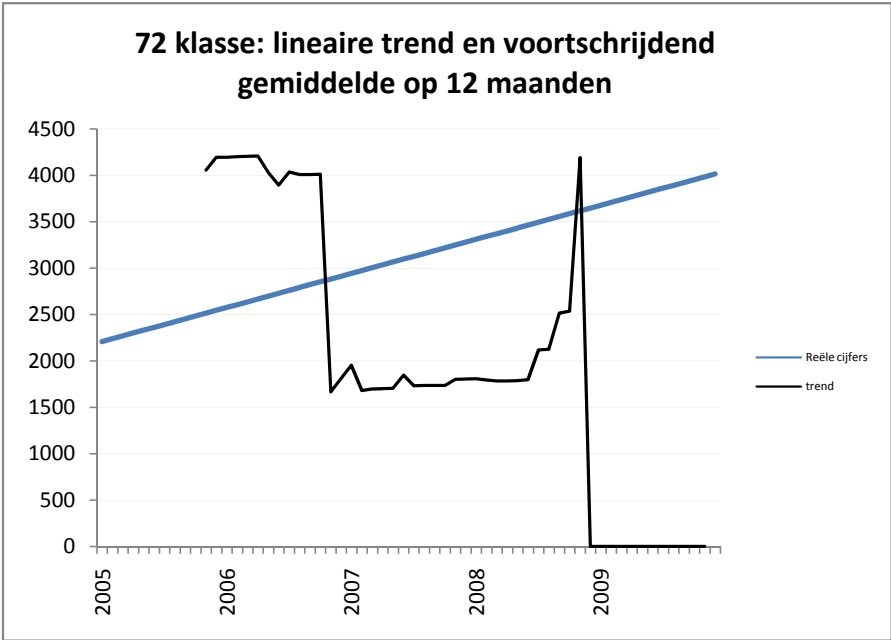
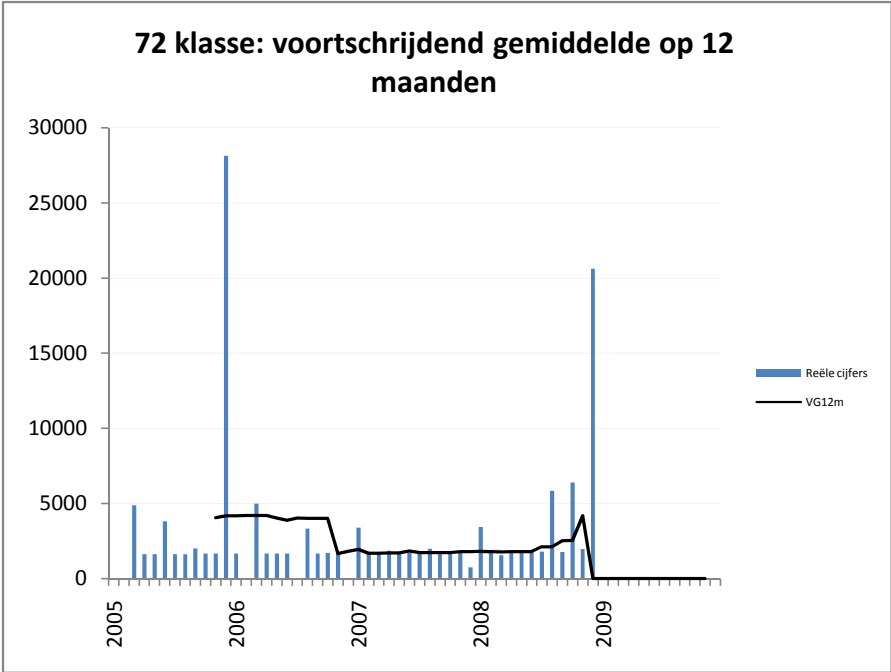




gemiddelde maandelijkse stijging in €:

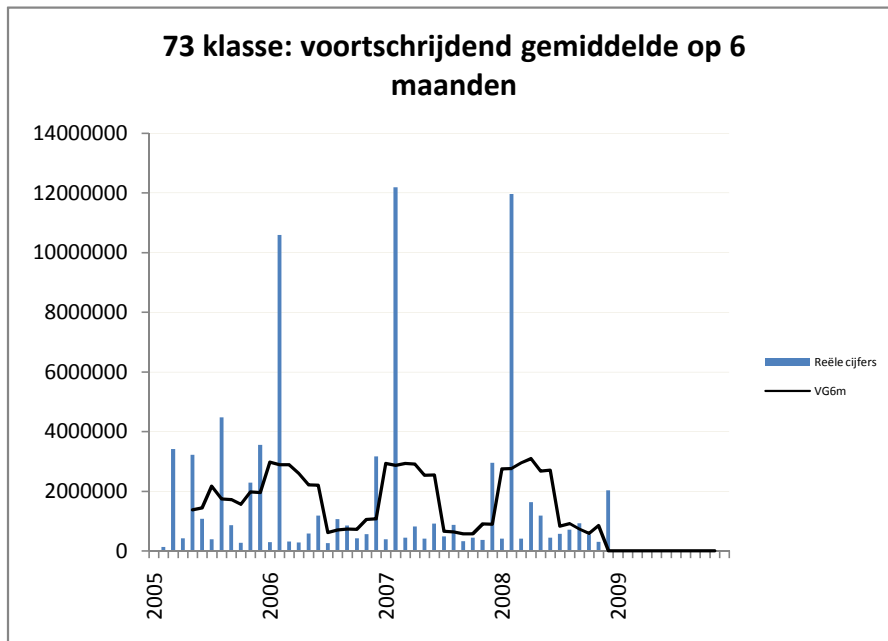
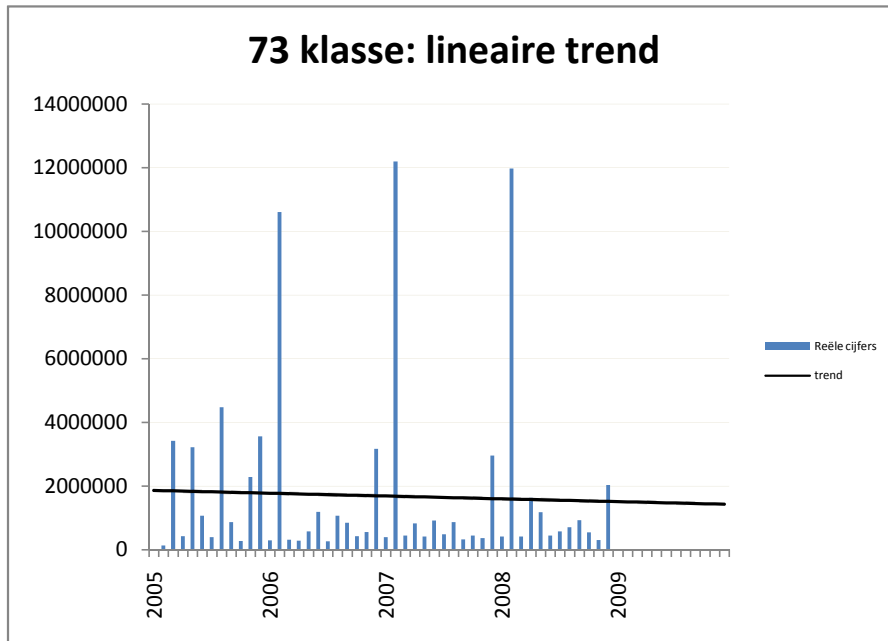
30,66

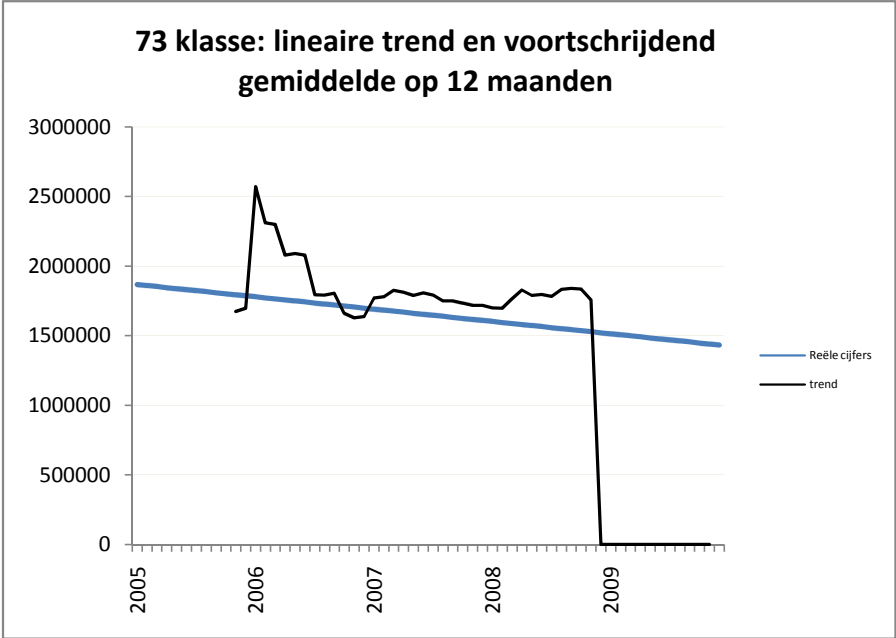
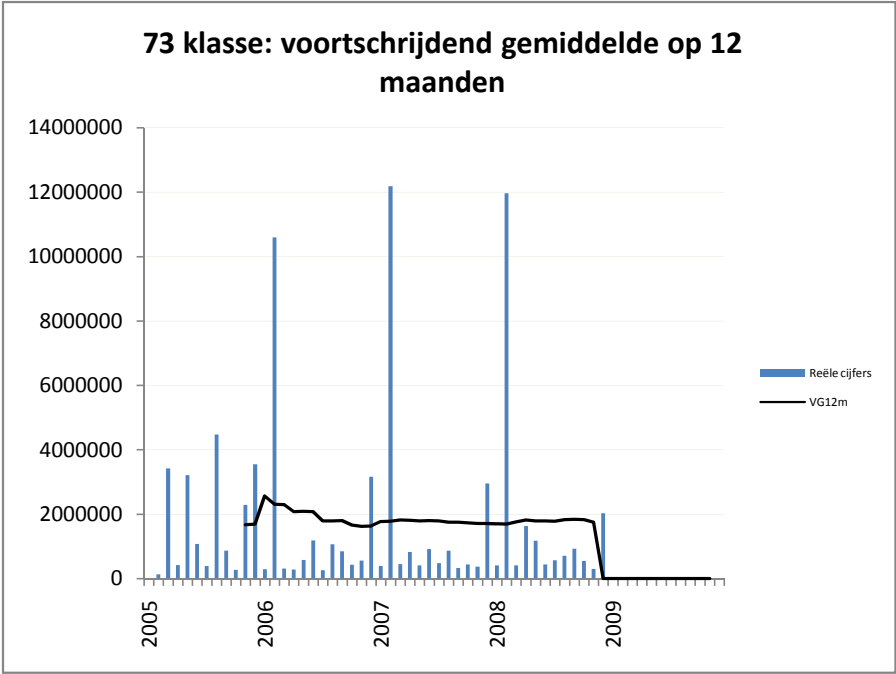




gemiddelde maandelijkse stijging in €:

-7.341,16

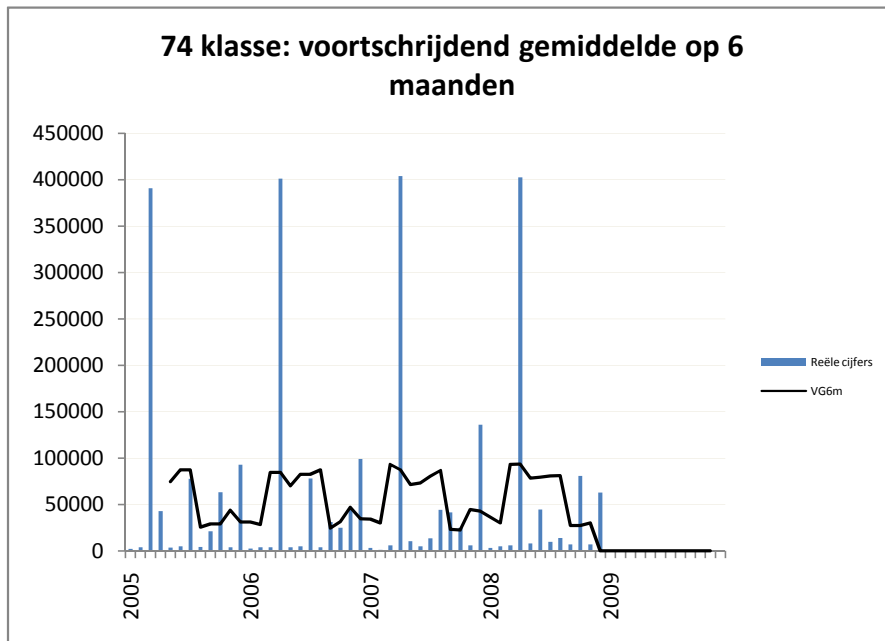
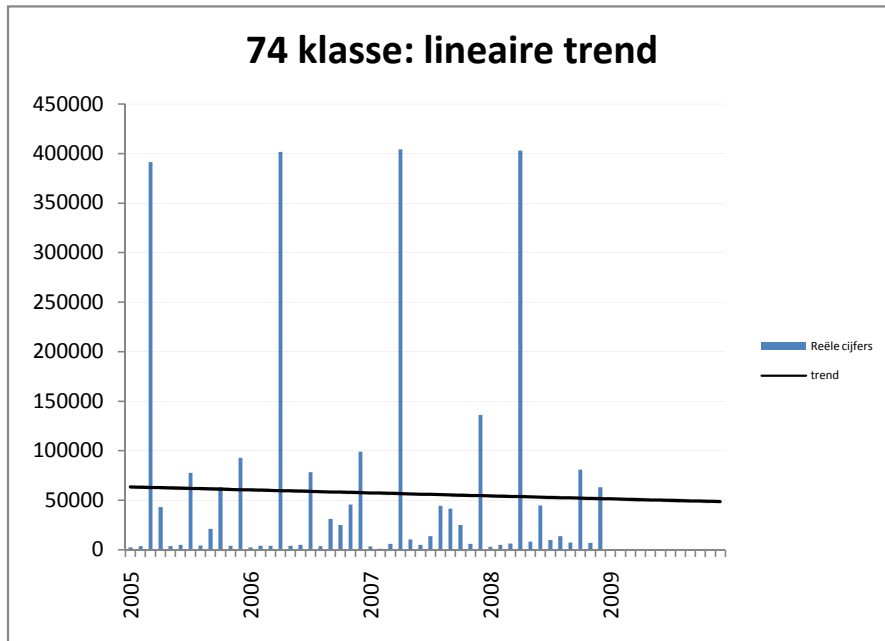


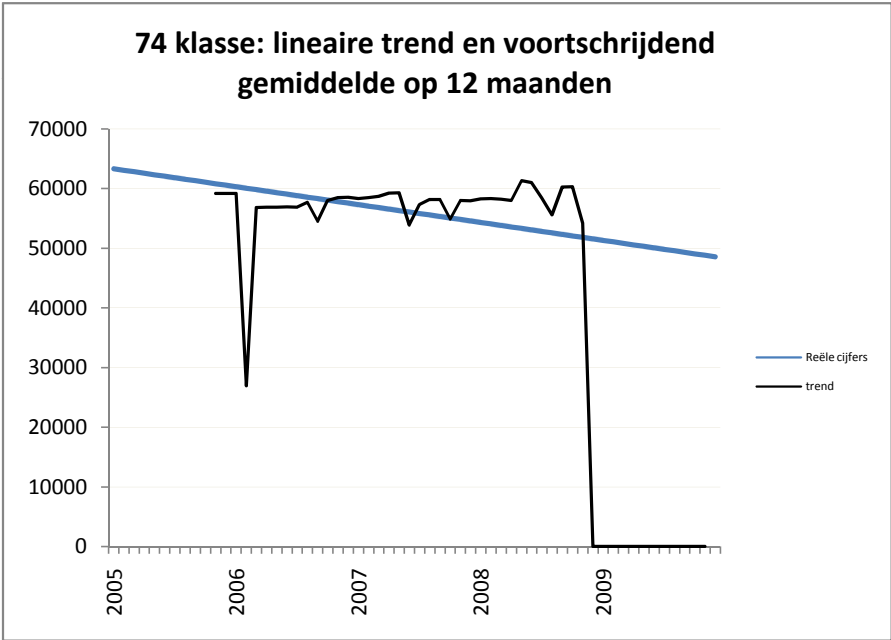
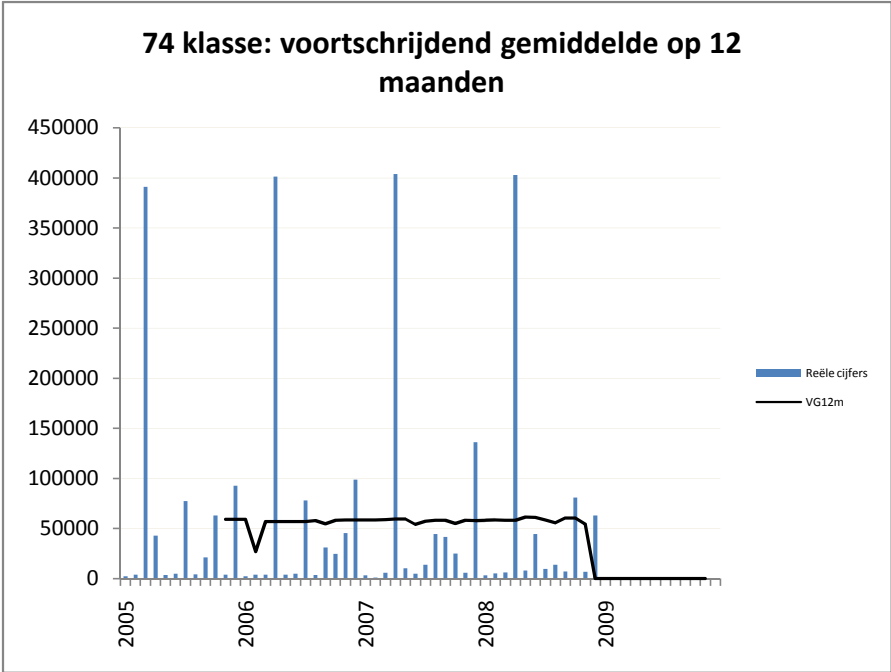


evolutie 74 klasse

gemiddelde maandelijkse stijging in €:

-250,31

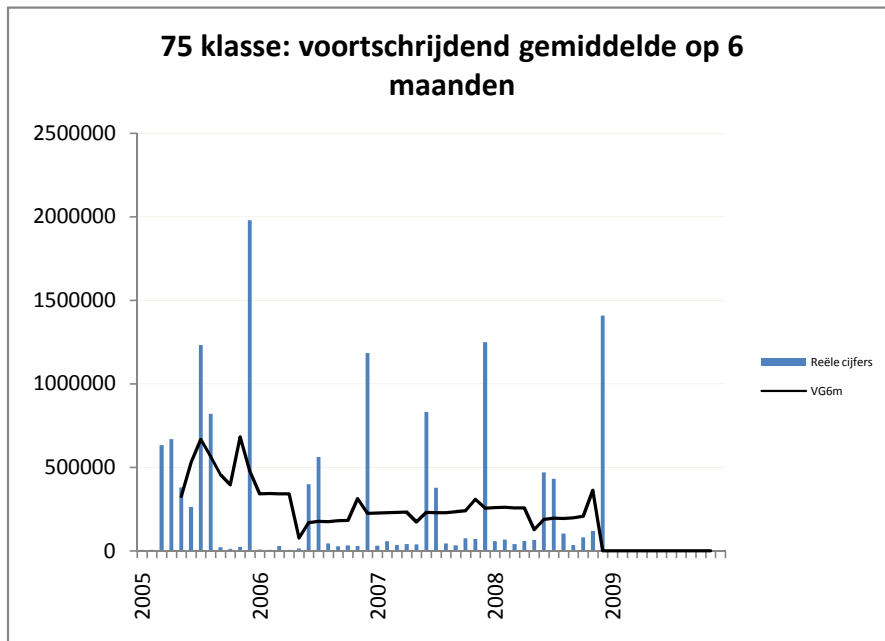
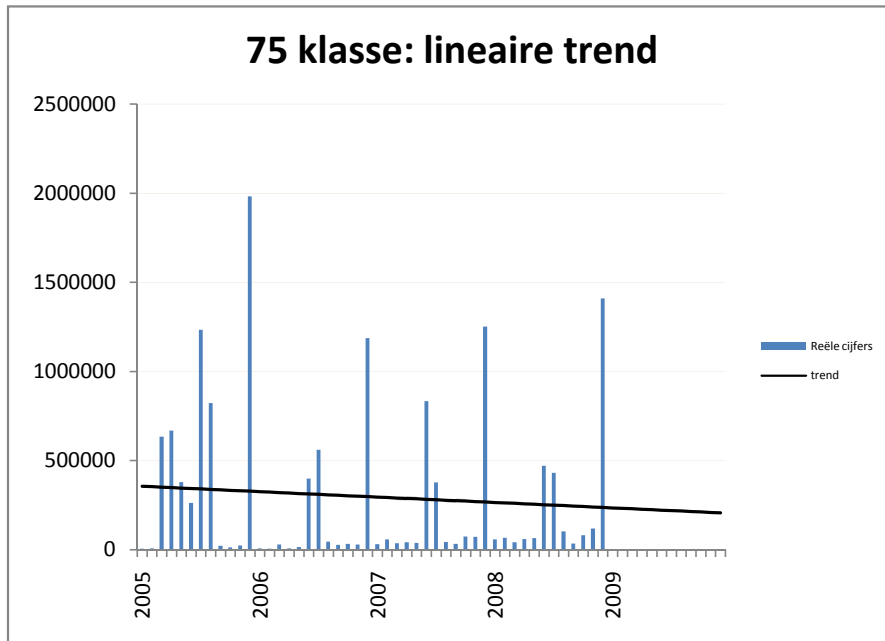


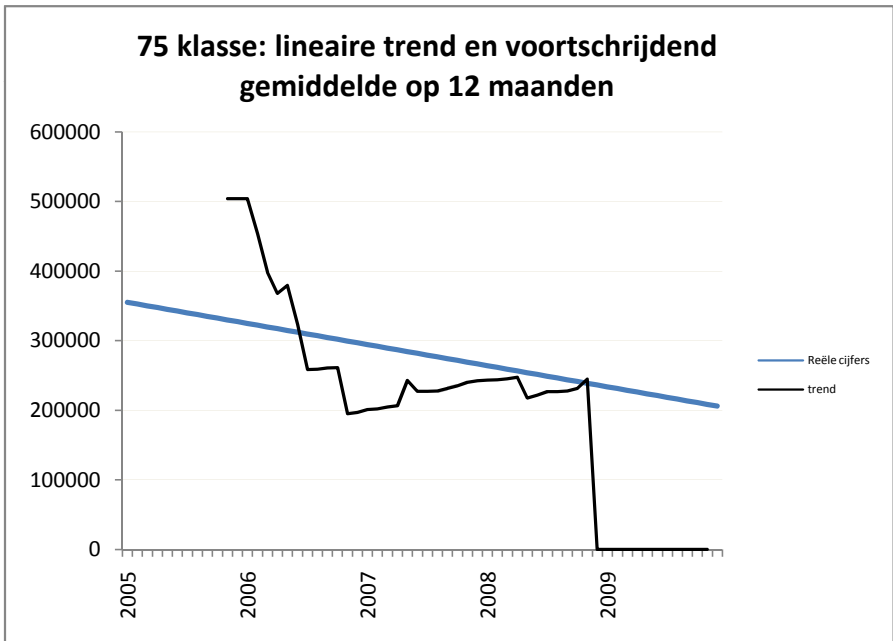
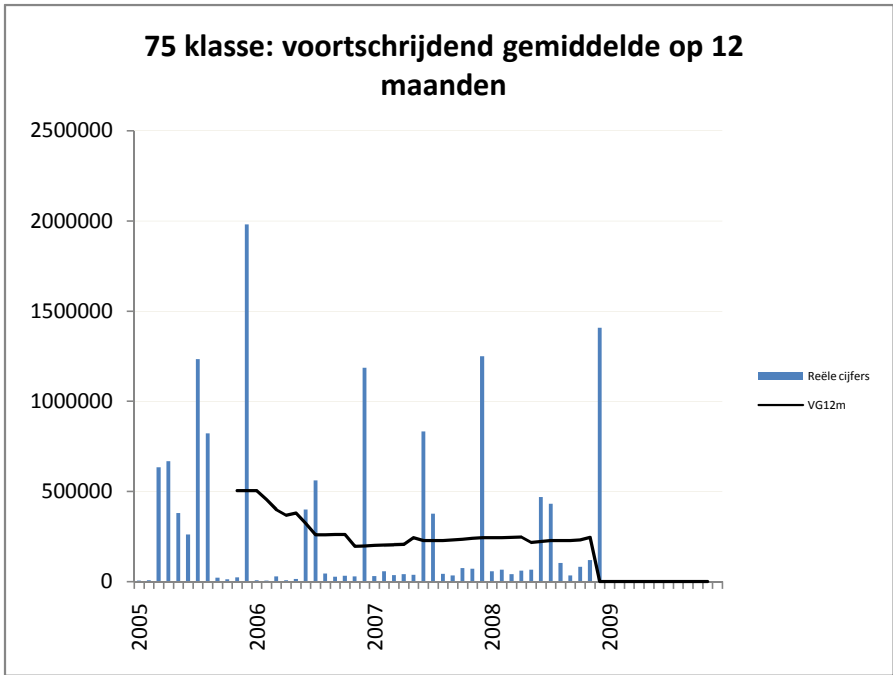


evolutie 75 klasse

gemiddelde maandelijkse stijging in €:

-2.520,94

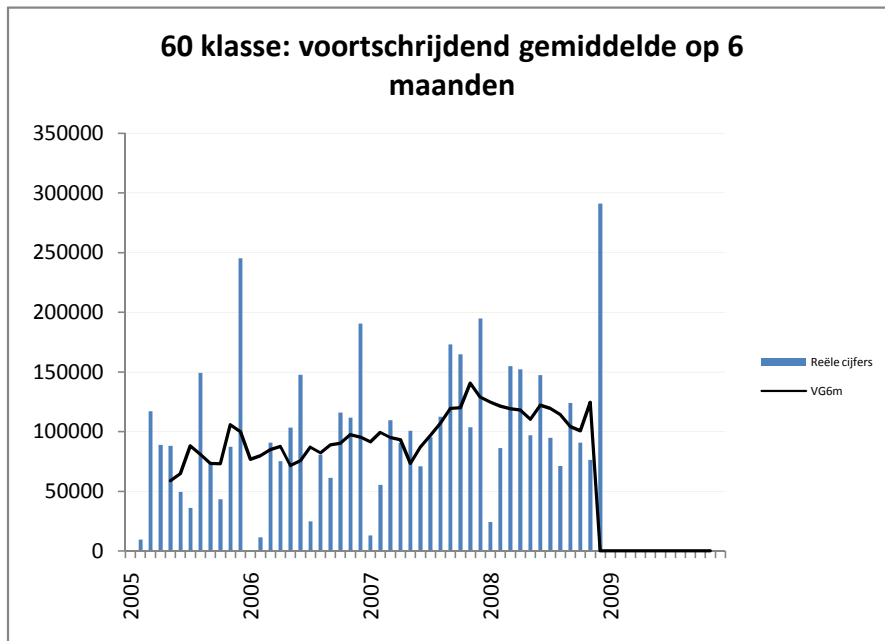
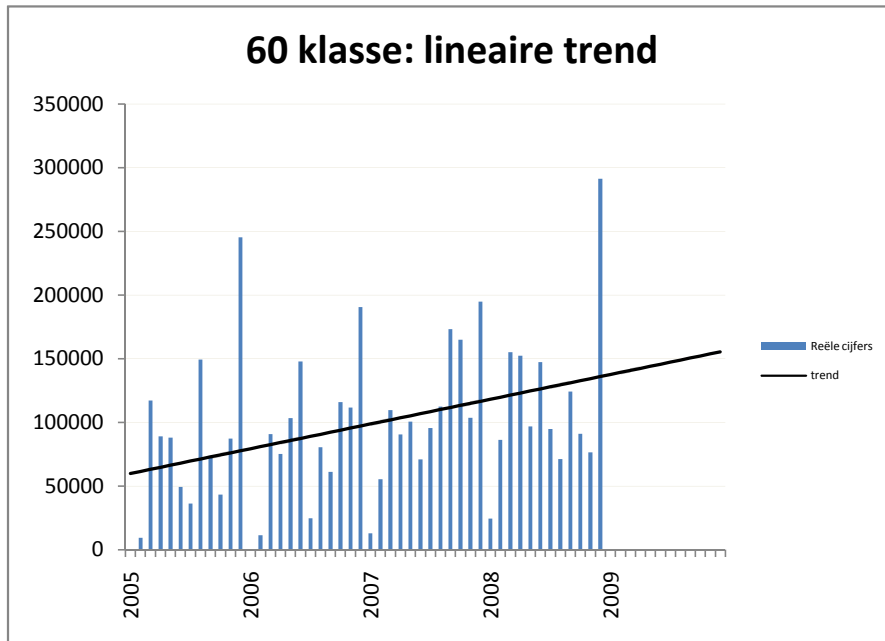


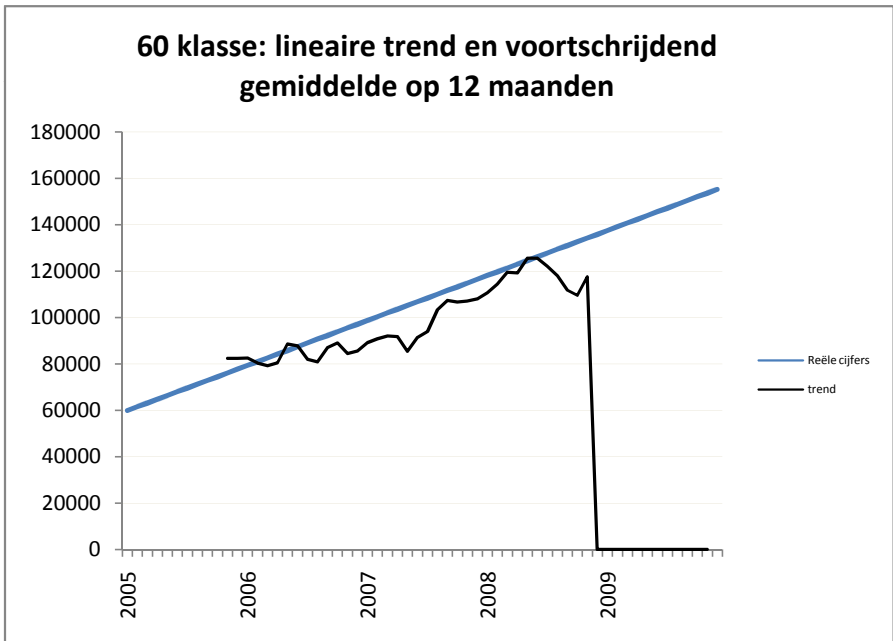
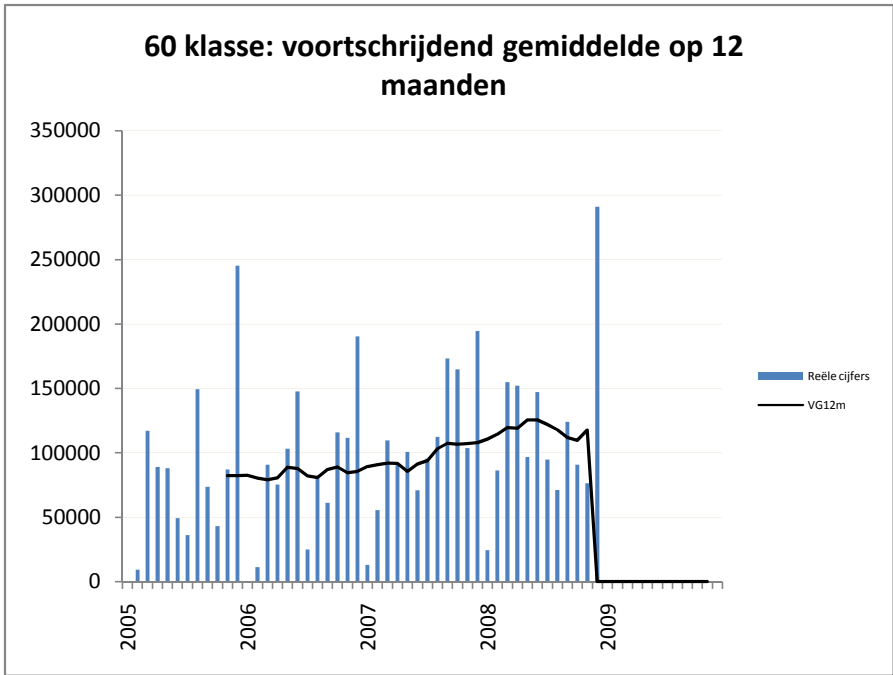


evolutie 60 klasse

gemiddelde maandelijkse stijging in €:

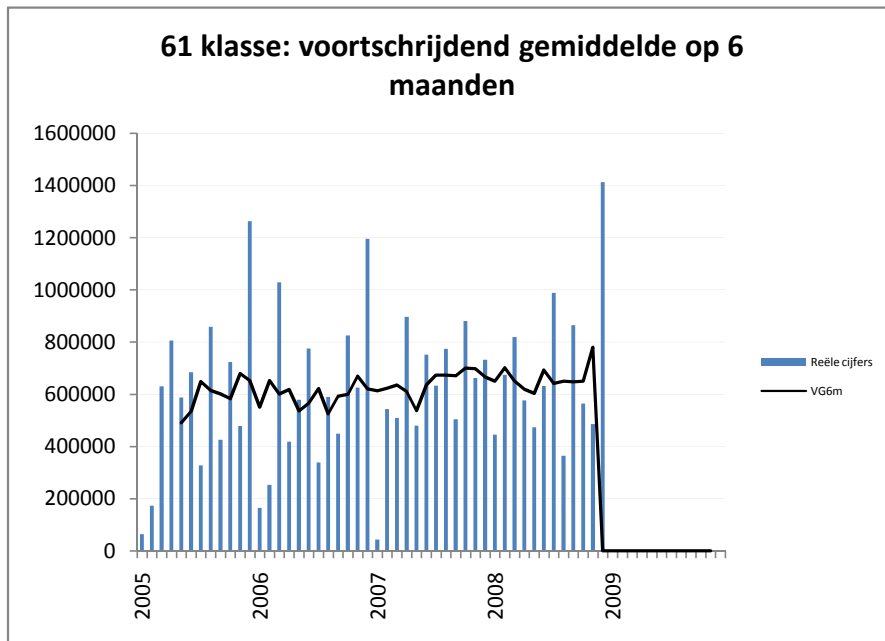
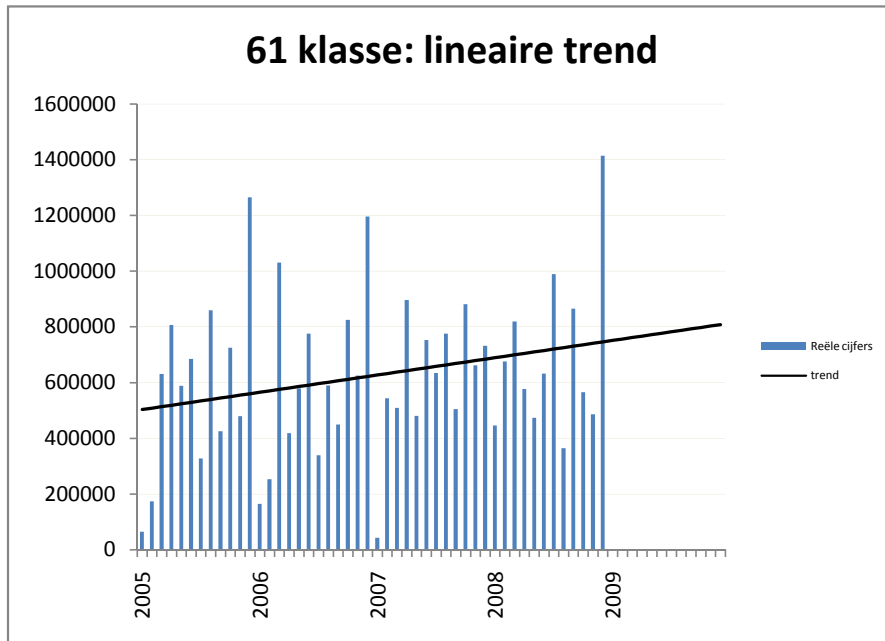
1.616,42

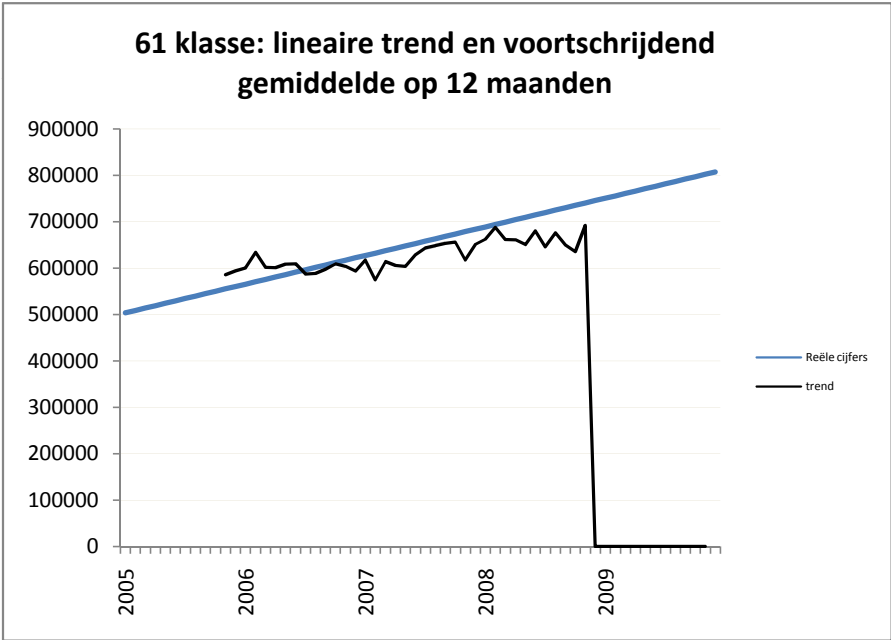
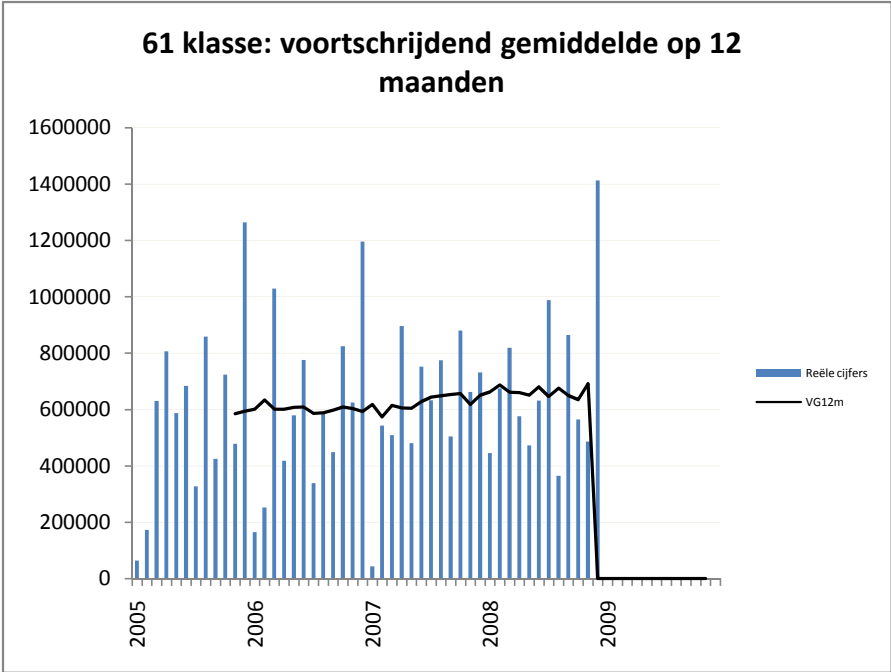




gemiddelde maandelijkse stijging in €:

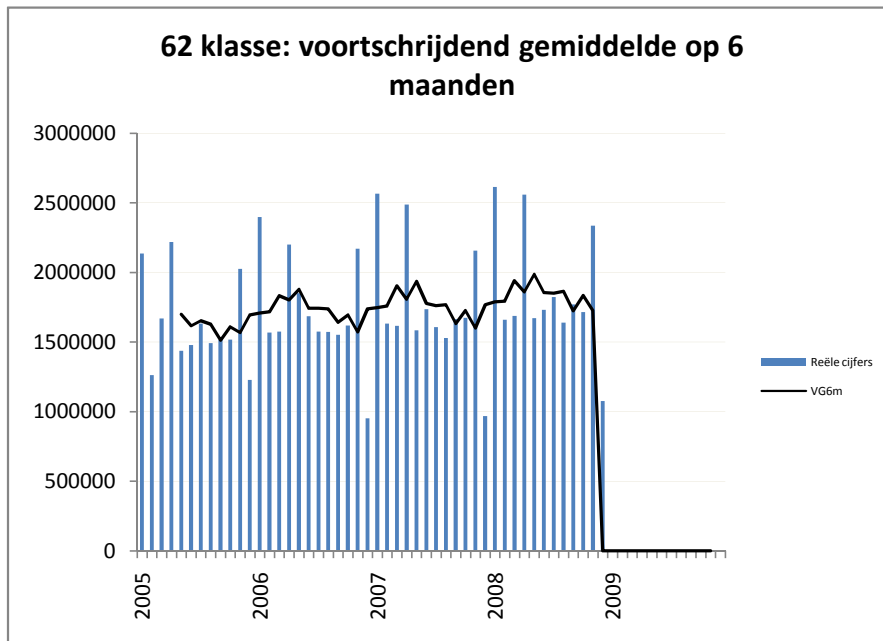
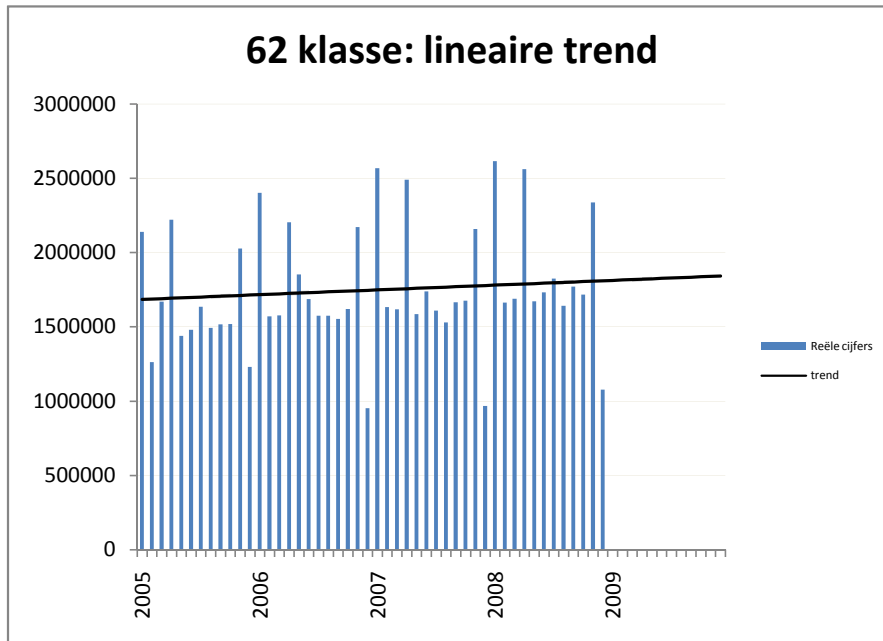
5.149,99

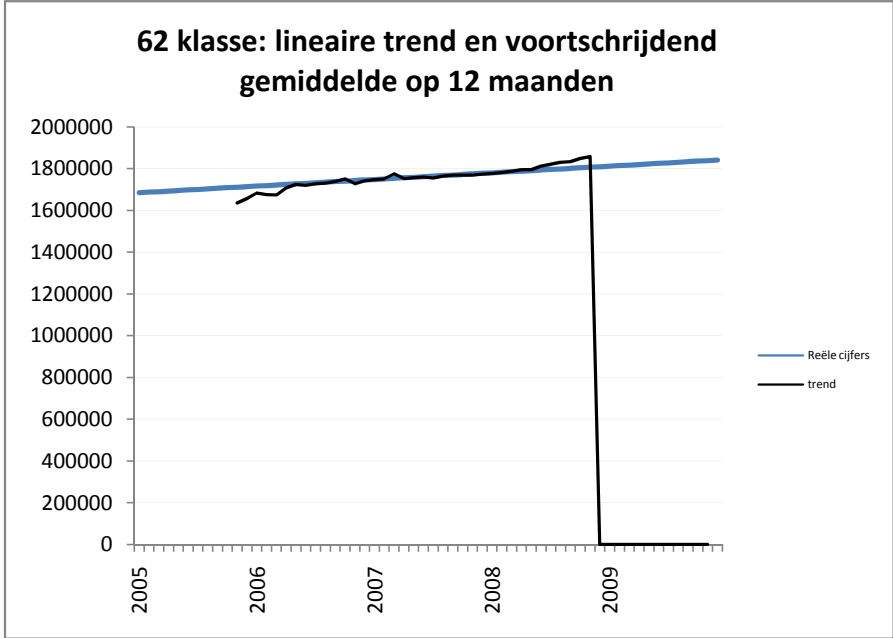
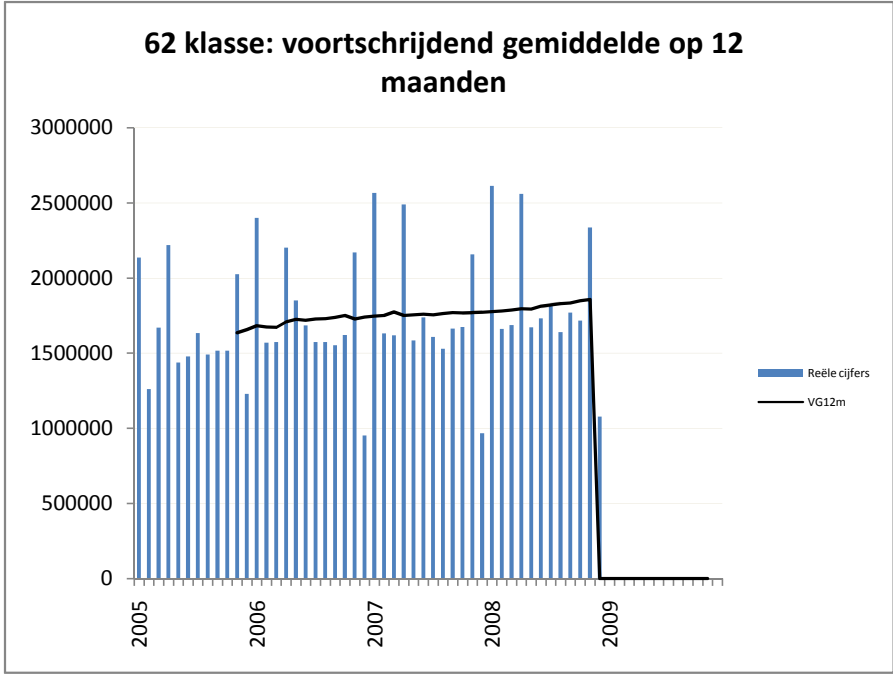




gemiddelde maandelijkse stijging in €:

2.658,27

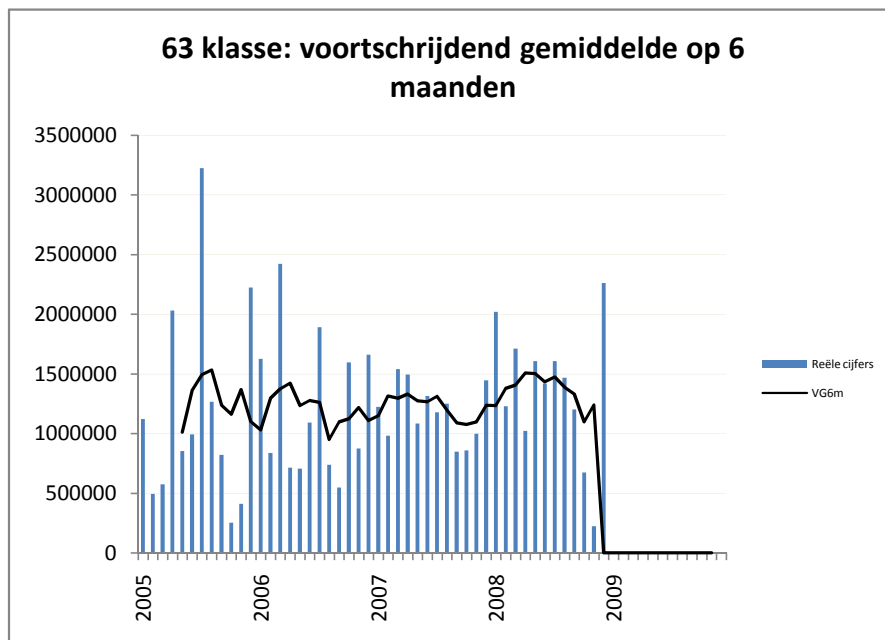
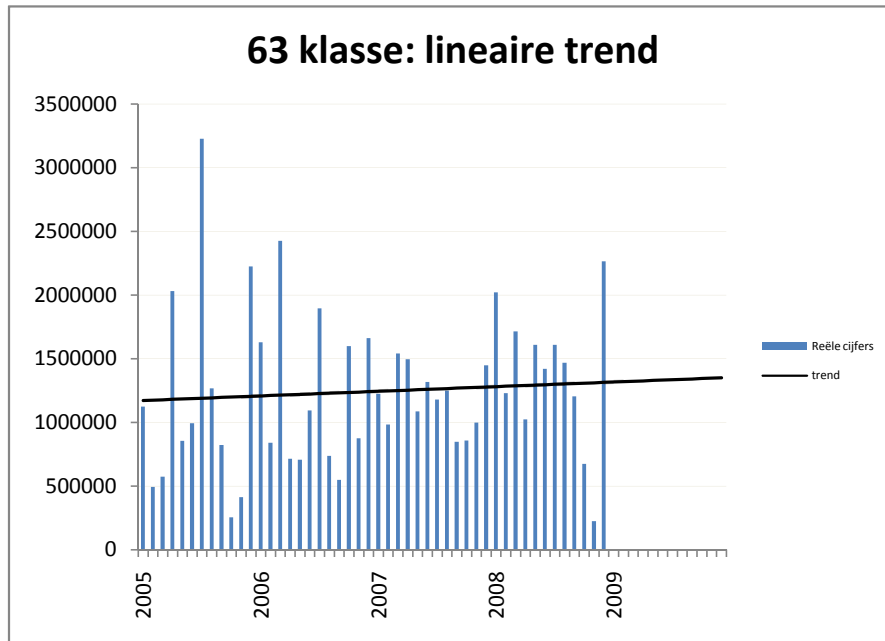


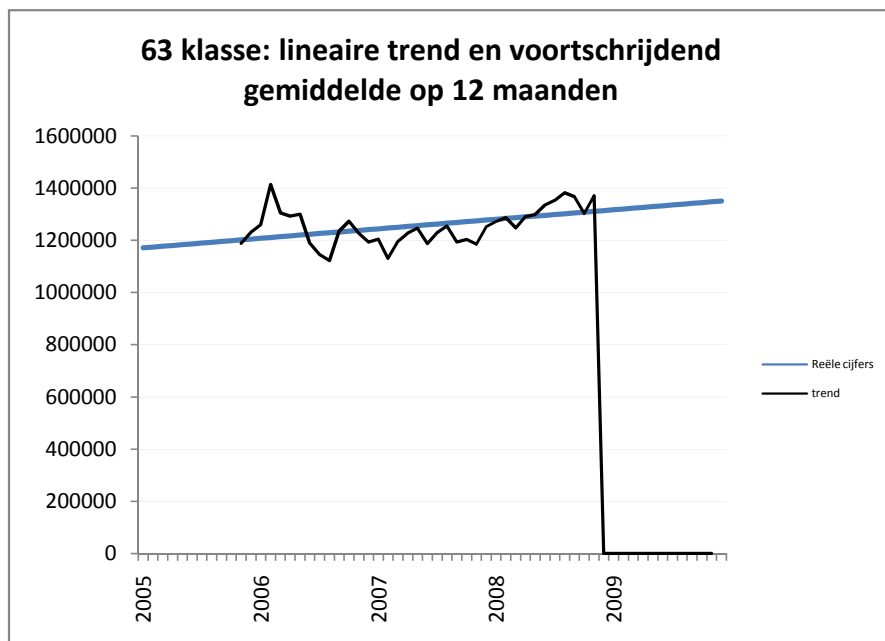
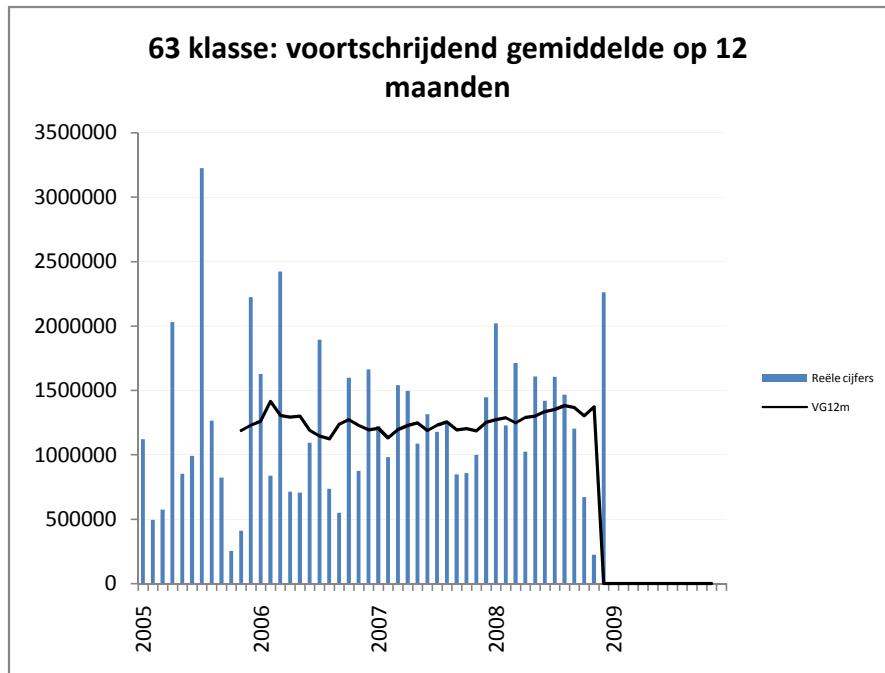


evolutie 63 klasse

gemiddelde maandelijkse stijging in €:

3.039,34

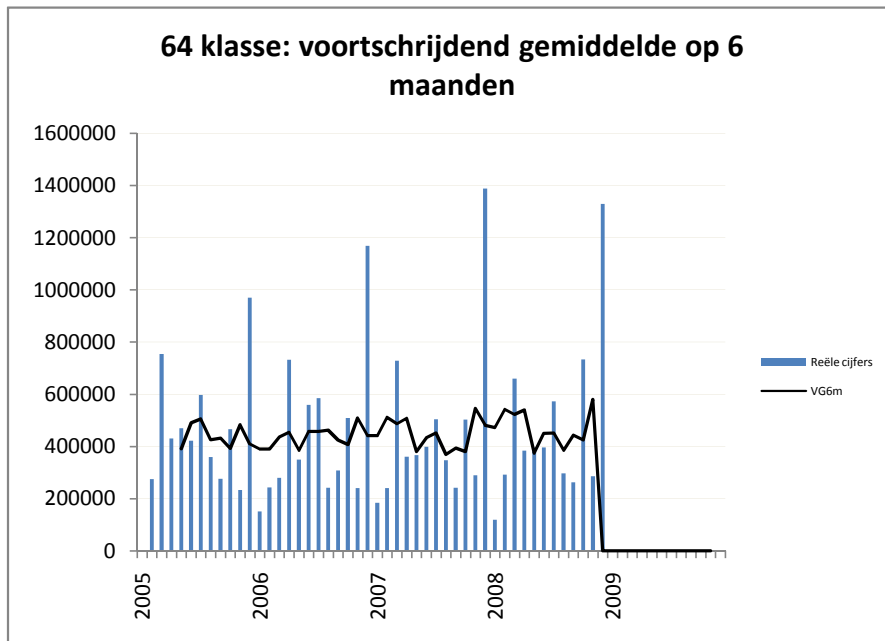
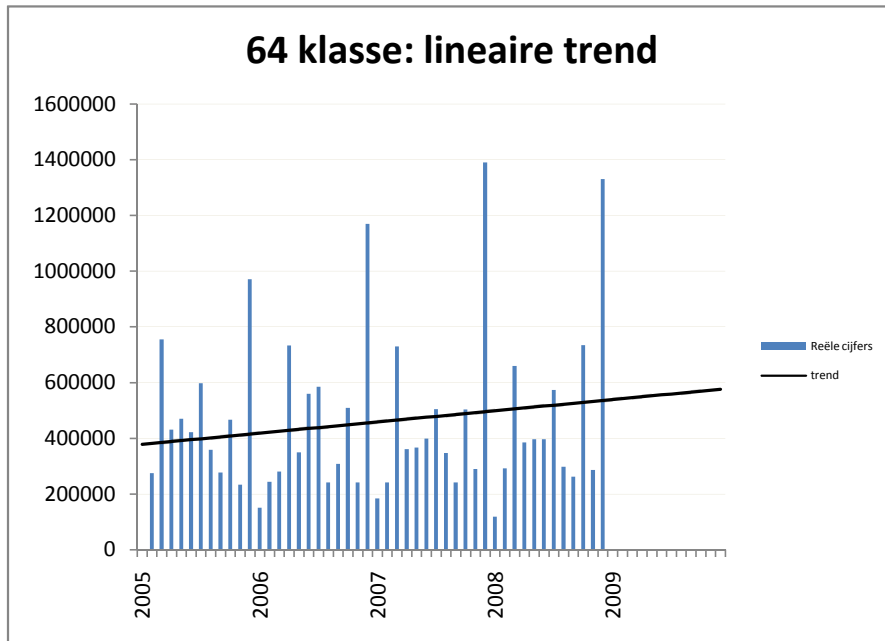


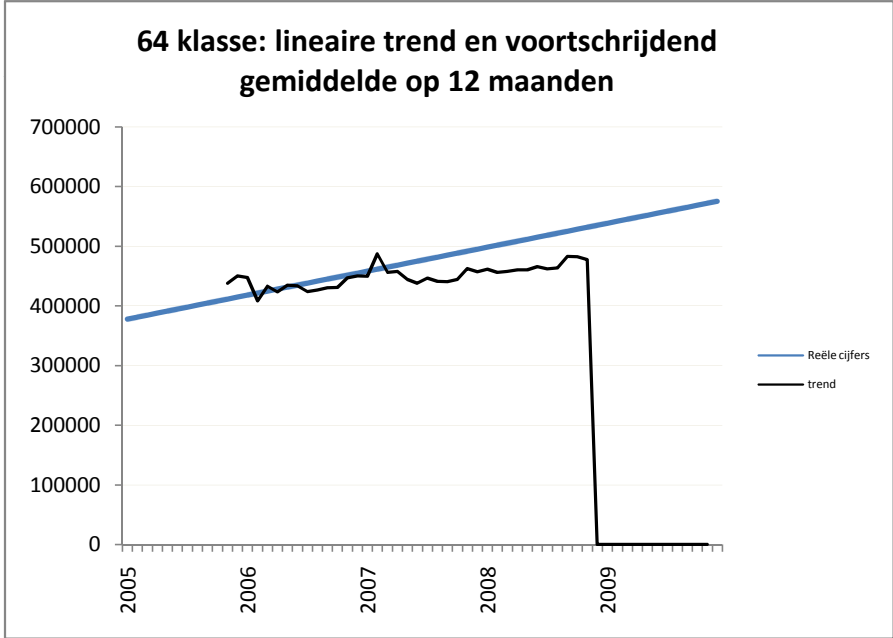
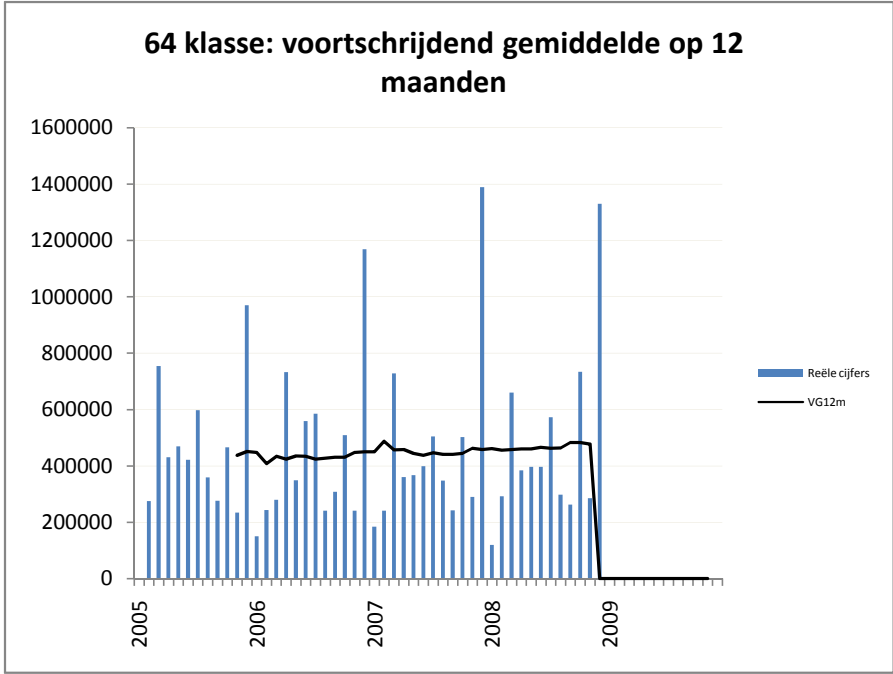


evolutie 64 klasse

gemiddelde maandelijkse stijging in €:

3.352,31

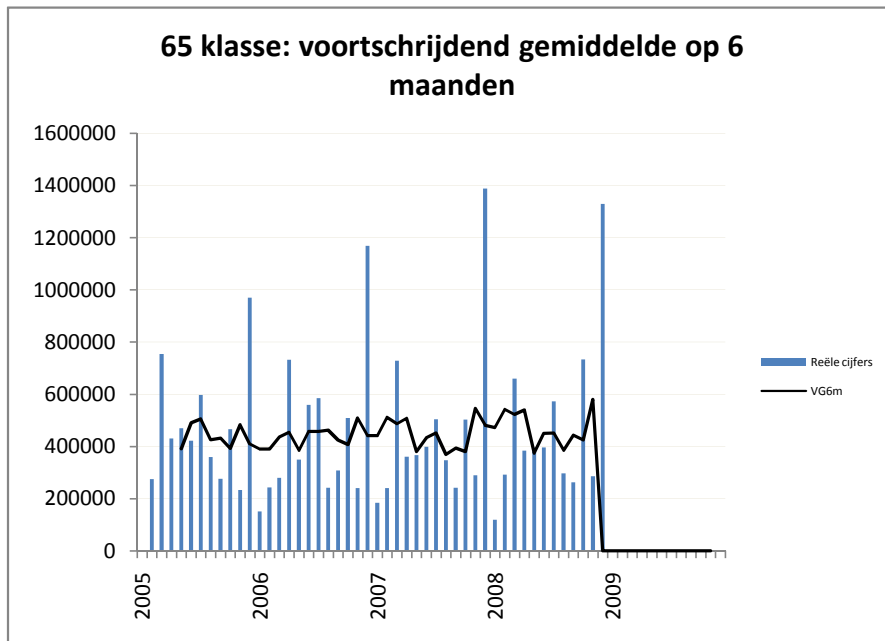
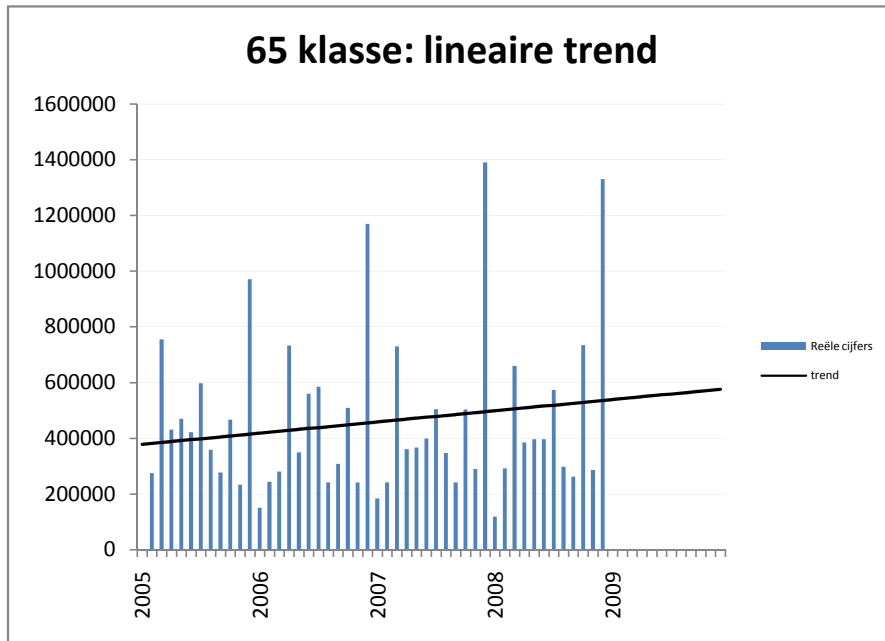


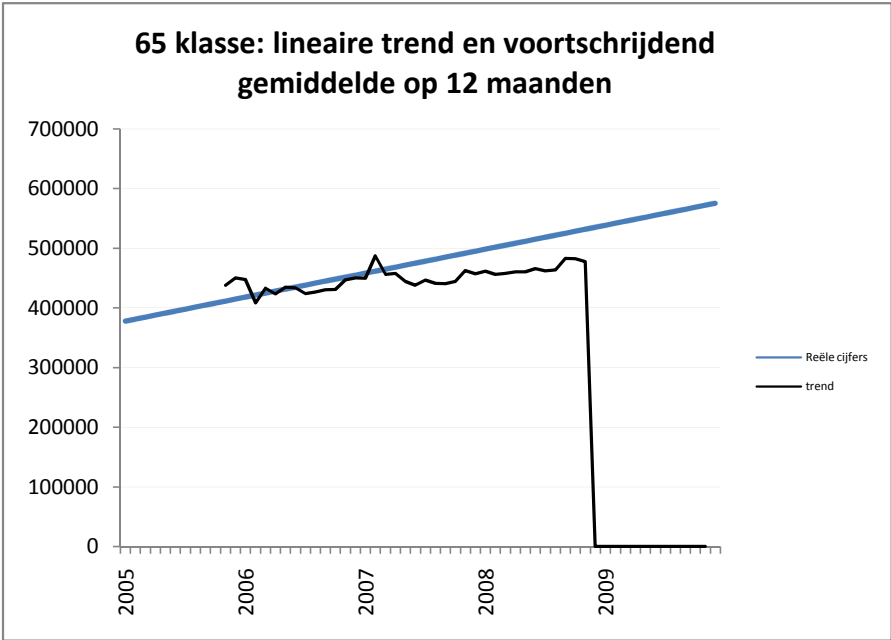
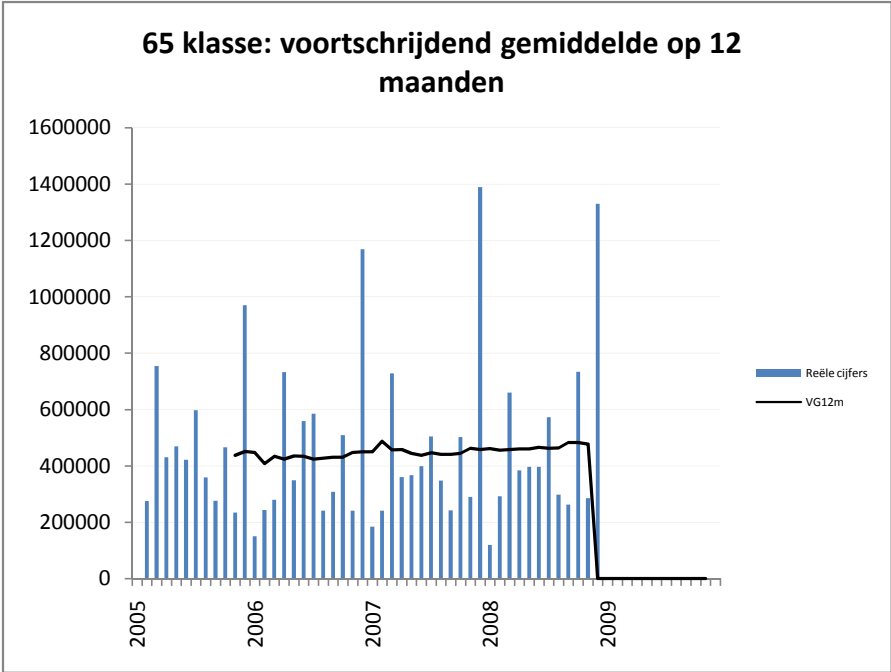


evolutie 65 klasse

gemiddelde maandelijkse stijging in €:

3.159,23







BDO Atrio
AuditorsAccountantsAdvisors

TRENDBEREKENING

TABELLEN

trend met seizoenscorrectie

periode 2008 - 2009

In deze tabellen worden de reële cijfers vergeleken met de te verwachten trendwaarde. De procentuele afwijking tussen beiden wordt weergegeven, indien deze groter is dan 40% verschijnen er drie sterretjes (***)

evolutie 70 klasse

2008

	reële cijfers	trend	verschil in %	controle
j	42.242	140.956	-70,0 ***	
f	74.068	194.108	-61,8 ***	
m	1.439.667	504.505	185,4 ***	
a	1.126.790	869.269	29,6	
m	6.577.855	2.893.388	127,3 ***	
j	930.873	2.357.345	-60,5 ***	
j	3.281.750	3.197.429	2,6	
a	3.111.380	4.573.147	-32,0	
s	3.237.299	3.634.093	-10,9	
o	2.364.341	4.168.102	-43,3 ***	
n	2.309.598	2.540.182	-9,1	
d	4.181.001	3.506.364	19,2	
totaal	28.676.866	28.578.889	0,3	

	reële cijfers	trend	verschil in %	controle
j	42.242	140.956	-70,0 ***	
f	116.311	335.064	-65,3 ***	
m	1.555.978	839.569	85,3 ***	
a	2.682.768	1.708.838	57,0 ***	
m	9.260.623	4.602.226	101,2 ***	
j	10.191.496	6.959.571	46,4 ***	
j	13.473.246	10.157.000	32,6	
a	16.584.626	14.730.147	12,6	
s	19.821.925	18.364.241	7,9	
o	22.186.266	22.532.343	-1,5	
n	24.495.864	25.072.525	-2,3	
d	28.676.866	28.578.889	0,3	

2009

	reële cijfers	trend	verschil in %	controle
j		188.982	#VALUE!	#VALUE!
f		242.134	#VALUE!	#VALUE!
m		552.531	#VALUE!	#VALUE!
a		917.295	#VALUE!	#VALUE!
m		2.941.414	#VALUE!	#VALUE!
j		2.405.371	#VALUE!	#VALUE!
j		3.245.455	#VALUE!	#VALUE!
a		4.621.173	#VALUE!	#VALUE!
s		3.682.120	#VALUE!	#VALUE!
o		4.216.128	#VALUE!	#VALUE!
n		2.588.208	#VALUE!	#VALUE!
d		3.554.390	#VALUE!	#VALUE!
totaal	0	29.155.201	-29.155.201	-100,0

	reële cijfers	trend	verschil in %	controle
j		188.982	#VALUE!	#VALUE!
f	#VALUE!	431.116	#VALUE!	#VALUE!
m	#VALUE!	983.647	#VALUE!	#VALUE!
a	#VALUE!	1.900.942	#VALUE!	#VALUE!
m	#VALUE!	4.842.356	#VALUE!	#VALUE!
j	#VALUE!	7.247.727	#VALUE!	#VALUE!
j	#VALUE!	10.493.183	#VALUE!	#VALUE!
a	#VALUE!	15.114.355	#VALUE!	#VALUE!
s	#VALUE!	18.796.475	#VALUE!	#VALUE!
o	#VALUE!	23.012.603	#VALUE!	#VALUE!
n	#VALUE!	25.600.811	#VALUE!	#VALUE!
d	#VALUE!	29.155.201	#VALUE!	#VALUE!

evolutie 71 klasse

2008

	reële cijfers	trend	verschil in %	controle
j	267.238	369.532	-27,7	
f	719.815	552.625	30,3	
m	454.885	564.025	-19,4	
a	728.036	656.554	10,9	
m	738.851	593.113	24,6	
j	411.071	516.206	-20,4	
j	943.493	666.866	41,5 ***	
a	456.631	643.654	-29,1	
s	314.893	570.493	-44,8 ***	
o	1.363.478	890.283	53,2 ***	
n	283.805	553.796	-48,8 ***	
d	1.523.069	1.667.214	-8,6	
totaal	8.205.266	8.244.362	-0,5	

	reële cijfers	trend	verschil in %	controle
j	267.238	369.532	-27,7	
f	987.053	922.158	7,0	
m	1.441.938	1.486.183	-3,0	
a	2.169.974	2.142.737	1,3	
m	2.908.824	2.735.850	6,3	
j	3.319.896	3.252.056	2,1	
j	4.263.389	3.918.922	8,8	
a	4.720.020	4.562.576	3,5	
s	5.034.913	5.133.069	-1,9	
o	6.398.391	6.023.351	6,2	
n	6.682.196	6.577.148	1,6	
d	8.205.266	8.244.362	-0,5	

2009

	reële cijfers	trend	verschil in %	controle
j		462.977	#VALUE!	#VALUE!
f		646.070	#VALUE!	#VALUE!
m		657.470	#VALUE!	#VALUE!
a		749.998	#VALUE!	#VALUE!
m		686.558	#VALUE!	#VALUE!
j		609.650	#VALUE!	#VALUE!
j		760.311	#VALUE!	#VALUE!
a		737.098	#VALUE!	#VALUE!
s		663.937	#VALUE!	#VALUE!
o		983.727	#VALUE!	#VALUE!
n		647.241	#VALUE!	#VALUE!
d		1.760.659	#VALUE!	#VALUE!
totaal	0	9.365.697	-9.365.697	-100,0

	reële cijfers	trend	verschil in %	controle
j		462.977	#VALUE!	#VALUE!
f	#VALUE!	1.109.047	#VALUE!	#VALUE!
m	#VALUE!	1.766.516	#VALUE!	#VALUE!
a	#VALUE!	2.516.515	#VALUE!	#VALUE!
m	#VALUE!	3.203.073	#VALUE!	#VALUE!
j	#VALUE!	3.812.723	#VALUE!	#VALUE!
j	#VALUE!	4.573.034	#VALUE!	#VALUE!
a	#VALUE!	5.310.132	#VALUE!	#VALUE!
s	#VALUE!	5.974.070	#VALUE!	#VALUE!
o	#VALUE!	6.957.797	#VALUE!	#VALUE!
n	#VALUE!	7.605.038	#VALUE!	#VALUE!
d	#VALUE!	9.365.697	#VALUE!	#VALUE!

evolutie 72 klasse

2008

	reële cijfers	trend	verschil in %	controle
j	3.437	2.203	56,0 ***	
f	1.736	938	85,0 ***	
m	1.566	3.369	-53,5 ***	
a	1.705	1.793	-4,9	
m	1.734	1.762	-1,6	
j	1.738	2.308	-24,7	
j	1.800	1.363	32,0	
a	5.841	3.274	78,4 ***	
s	1.768	1.865	-5,2	
o	6.384	2.941	117,0 ***	
n	1.958	1.835	6,7	
d	20.635	12.462	65,6 ***	
totaal	50.300	36.113	39,3	

cumulatief	reële cijfers	trend	verschil in %	controle
j	3.437	2.203	56,0 ***	
f	5.173	3.141	64,7 ***	
m	6.739	6.511	3,5	
a	8.444	8.304	1,7	
m	10.177	10.066	1,1	
j	11.915	12.373	-3,7	
j	13.715	13.737	-0,2	
a	19.556	17.010	15,0	
s	21.324	18.875	13,0	
o	27.707	21.816	27,0	
n	29.665	23.651	25,4	
d	50.300	36.113	39,3	

2009

	reële cijfers	trend	verschil in %	controle
j		2.257	#VALUE!	#VALUE!
f		992	#VALUE!	#VALUE!
m		3.423	#VALUE!	#VALUE!
a		1.847	#VALUE!	#VALUE!
m		1.816	#VALUE!	#VALUE!
j		2.361	#VALUE!	#VALUE!
j		1.417	#VALUE!	#VALUE!
a		3.327	#VALUE!	#VALUE!
s		1.918	#VALUE!	#VALUE!
o		2.995	#VALUE!	#VALUE!
n		1.888	#VALUE!	#VALUE!
d		12.516	#VALUE!	#VALUE!
totaal	0	36.758	-36.758	-100,0

cumulatief	reële cijfers	trend	verschil in %	controle
j		2.257	#VALUE!	#VALUE!
f	#VALUE!	3.249	#VALUE!	#VALUE!
m	#VALUE!	6.672	#VALUE!	#VALUE!
a	#VALUE!	8.518	#VALUE!	#VALUE!
m	#VALUE!	10.334	#VALUE!	#VALUE!
j	#VALUE!	12.695	#VALUE!	#VALUE!
j	#VALUE!	14.112	#VALUE!	#VALUE!
a	#VALUE!	17.440	#VALUE!	#VALUE!
s	#VALUE!	19.358	#VALUE!	#VALUE!
o	#VALUE!	22.353	#VALUE!	#VALUE!
n	#VALUE!	24.242	#VALUE!	#VALUE!
d	#VALUE!	36.758	#VALUE!	#VALUE!

evolutie 73 klasse

2008

	reële cijfers	trend	verschil in %	controle
j	407.375	324.484	25,5	
f	11.968.137	8.772.958	36,4	
m	408.731	1.194.655	-65,8 ***	
a	1.627.986	837.864	94,3 ***	
m	1.175.438	1.395.277	-15,8	
j	441.998	952.254	-53,6 ***	
j	570.938	475.456	20,1	
a	703.310	1.828.336	-61,5 ***	
s	920.628	788.757	16,7	
o	542.342	469.251	15,6	
n	296.965	926.378	-67,9 ***	
d	2.026.302	2.973.993	-31,9	
totaal	21.090.150	20.939.663	0,7	

	reële cijfers	trend	verschil in %	controle
j	407.375	324.484	25,5	
f	12.375.512	9.097.442	36,0	
m	12.784.243	10.292.097	24,2	
a	14.412.229	11.129.962	29,5	
m	15.587.667	12.525.238	24,5	
j	16.029.665	13.477.492	18,9	
j	16.600.602	13.952.948	19,0	
a	17.303.913	15.781.285	9,6	
s	18.224.541	16.570.041	10,0	
o	18.766.883	17.039.292	10,1	
n	19.063.848	17.965.670	6,1	
d	21.090.150	20.939.663	0,7	

2009

	reële cijfers	trend	verschil in %	controle
j		358.268	#VALUE!	#VALUE!
f		8.806.742	#VALUE!	#VALUE!
m		1.228.439	#VALUE!	#VALUE!
a		871.648	#VALUE!	#VALUE!
m		1.429.061	#VALUE!	#VALUE!
j		986.038	#VALUE!	#VALUE!
j		509.240	#VALUE!	#VALUE!
a		1.862.120	#VALUE!	#VALUE!
s		822.541	#VALUE!	#VALUE!
o		503.035	#VALUE!	#VALUE!
n		960.162	#VALUE!	#VALUE!
d		3.007.777	#VALUE!	#VALUE!
totaal	0	21.345.070	-21.345.070	-100,0

	reële cijfers	trend	verschil in %	controle
j		358.268	#VALUE!	#VALUE!
f	#VALUE!	9.165.010	#VALUE!	#VALUE!
m	#VALUE!	10.393.449	#VALUE!	#VALUE!
a	#VALUE!	11.265.098	#VALUE!	#VALUE!
m	#VALUE!	12.694.158	#VALUE!	#VALUE!
j	#VALUE!	13.680.196	#VALUE!	#VALUE!
j	#VALUE!	14.189.436	#VALUE!	#VALUE!
a	#VALUE!	16.051.556	#VALUE!	#VALUE!
s	#VALUE!	16.874.097	#VALUE!	#VALUE!
o	#VALUE!	17.377.132	#VALUE!	#VALUE!
n	#VALUE!	18.337.294	#VALUE!	#VALUE!
d	#VALUE!	21.345.070	#VALUE!	#VALUE!

evolutie 74 klasse

2008

	reële cijfers	trend	verschil in %	controle
j	3.060	362	746,4 ***	
f	4.998	1.088	359,4 ***	
m	5.990	99.356	-94,0 ***	
a	402.884	310.484	29,8	
m	7.917	4.068	94,6 ***	
j	44.573	12.394	259,6 ***	
j	9.748	42.413	-77,0 ***	
a	13.632	14.116	-3,4	
s	7.025	22.815	-69,2 ***	
o	80.835	46.075	75,4 ***	
n	6.824	13.149	-48,1 ***	
d	62.875	95.339	-34,1	
totaal	650.361	661.658	-1,7	

	reële cijfers	trend	verschil in %	controle
j	3.060	362	746,4 ***	
f	8.058	1.450	455,9 ***	
m	14.049	100.806	-86,1 ***	
a	416.933	411.290	1,4	
m	424.850	415.358	2,3	
j	469.423	427.751	9,7	
j	479.171	470.164	1,9	
a	492.803	484.280	1,8	
s	499.828	507.095	-1,4	
o	580.663	553.170	5,0	
n	587.487	566.319	3,7	
d	650.361	661.658	-1,7	

2009

	reële cijfers	trend	verschil in %	controle
j		-1.180	#VALUE!	#VALUE!
f		-454	#VALUE!	#VALUE!
m		97.815	#VALUE!	#VALUE!
a		308.942	#VALUE!	#VALUE!
m		2.526	#VALUE!	#VALUE!
j		10.852	#VALUE!	#VALUE!
j		40.871	#VALUE!	#VALUE!
a		12.574	#VALUE!	#VALUE!
s		21.274	#VALUE!	#VALUE!
o		44.533	#VALUE!	#VALUE!
n		11.607	#VALUE!	#VALUE!
d		93.797	#VALUE!	#VALUE!
totaal	0	643.156	-643.156	-100,0

	reële cijfers	trend	verschil in %	controle
j		-1.180	#VALUE!	#VALUE!
f	#VALUE!	-1.634	#VALUE!	#VALUE!
m	#VALUE!	96.180	#VALUE!	#VALUE!
a	#VALUE!	405.122	#VALUE!	#VALUE!
m	#VALUE!	407.648	#VALUE!	#VALUE!
j	#VALUE!	418.500	#VALUE!	#VALUE!
j	#VALUE!	459.371	#VALUE!	#VALUE!
a	#VALUE!	471.945	#VALUE!	#VALUE!
s	#VALUE!	493.219	#VALUE!	#VALUE!
o	#VALUE!	537.751	#VALUE!	#VALUE!
n	#VALUE!	549.359	#VALUE!	#VALUE!
d	#VALUE!	643.156	#VALUE!	#VALUE!

evolutie 75 klasse

2008

	reële cijfers	trend	verschil in %	controle
j	56.693	-85.296	-166,5 ***	
f	66.362	-76.304	-187,0 ***	
m	40.920	74.528	-45,1 ***	
a	59.543	84.009	-29,1	
m	64.952	14.099	360,7 ***	
j	469.561	380.735	23,3	
j	430.624	540.519	-20,3	
a	103.111	143.217	-28,0	
s	34.000	-81.268	-141,8 ***	
o	81.191	-59.876	-235,6 ***	
n	118.241	-49.507	-338,8 ***	
d	1.408.234	1.346.405	4,6	
totaal	2.933.432	2.231.263	31,5	

cumulatief	reële cijfers	trend	verschil in %	controle
j	56.693	-85.296	-166,5 ***	
f	123.056	-161.599	-176,1 ***	
m	163.976	-87.071	-288,3 ***	
a	223.518	-3.062	-7.399,2 ***	
m	288.470	11.037	2.513,7 ***	
j	758.031	391.772	93,5 ***	
j	1.188.655	932.291	27,5	
a	1.291.766	1.075.508	20,1	
s	1.325.765	994.240	33,3	
o	1.406.956	934.365	50,6 ***	
n	1.525.198	884.858	72,4 ***	
d	2.933.432	2.231.263	31,5	

2009

	reële cijfers	trend	verschil in %	controle
j		-158.577	#VALUE!	#VALUE!
f		-149.585	#VALUE!	#VALUE!
m		1.247	#VALUE!	#VALUE!
a		10.727	#VALUE!	#VALUE!
m		-59.182	#VALUE!	#VALUE!
j		307.454	#VALUE!	#VALUE!
j		467.238	#VALUE!	#VALUE!
a		69.936	#VALUE!	#VALUE!
s		-154.549	#VALUE!	#VALUE!
o		-133.157	#VALUE!	#VALUE!
n		-122.788	#VALUE!	#VALUE!
d		1.273.124	#VALUE!	#VALUE!
totaal	0	1.351.887	-1.351.887	-100,0

cumulatief	reële cijfers	trend	verschil in %	controle
j		-158.577	#VALUE!	#VALUE!
f	#VALUE!	-308.162	#VALUE!	#VALUE!
m	#VALUE!	-306.915	#VALUE!	#VALUE!
a	#VALUE!	-296.188	#VALUE!	#VALUE!
m	#VALUE!	-355.370	#VALUE!	#VALUE!
j	#VALUE!	-47.916	#VALUE!	#VALUE!
j	#VALUE!	419.322	#VALUE!	#VALUE!
a	#VALUE!	489.258	#VALUE!	#VALUE!
s	#VALUE!	334.709	#VALUE!	#VALUE!
o	#VALUE!	201.552	#VALUE!	#VALUE!
n	#VALUE!	78.763	#VALUE!	#VALUE!
d	#VALUE!	1.351.887	#VALUE!	#VALUE!

evolutie 60 klasse

2008

	reële cijfers	trend	verschil in %	controle
j	24.374	28.658	-14,9	
f	86.333	59.885	44,2 ***	
m	155.029	137.340	12,9	
a	152.290	121.063	25,8	
m	96.873	116.471	-16,8	
j	147.323	123.120	19,7	
j	94.785	82.057	15,5	
a	71.103	122.618	-42,0 ***	
s	124.202	127.368	-2,5	
o	90.926	123.020	-26,1	
n	76.434	113.976	-32,9	
d	291.152	249.689	16,6	
totaal	1.410.825	1.405.265	0,4	

	reële cijfers	trend	verschil in %	controle
j	24.374	28.658	-14,9	
f	110.707	88.544	25,0	
m	265.736	225.884	17,6	
a	418.026	346.946	20,5	
m	514.899	463.417	11,1	
j	662.222	586.537	12,9	
j	757.007	668.594	13,2	
a	828.111	791.213	4,7	
s	952.313	918.581	3,7	
o	1.043.239	1.041.600	0,2	
n	1.119.673	1.155.576	-3,1	
d	1.410.825	1.405.265	0,4	

2009

	reële cijfers	trend	verschil in %	controle
j		41.487	#VALUE!	#VALUE!
f		72.714	#VALUE!	#VALUE!
m		150.169	#VALUE!	#VALUE!
a		133.891	#VALUE!	#VALUE!
m		129.300	#VALUE!	#VALUE!
j		135.949	#VALUE!	#VALUE!
j		94.886	#VALUE!	#VALUE!
a		135.447	#VALUE!	#VALUE!
s		140.197	#VALUE!	#VALUE!
o		135.849	#VALUE!	#VALUE!
n		126.805	#VALUE!	#VALUE!
d		262.518	#VALUE!	#VALUE!
totaal	0	1.559.212	-1.559.212	-100,0

	reële cijfers	trend	verschil in %	controle
j		41.487	#VALUE!	#VALUE!
f	#VALUE!	114.201	#VALUE!	#VALUE!
m	#VALUE!	264.371	#VALUE!	#VALUE!
a	#VALUE!	398.262	#VALUE!	#VALUE!
m	#VALUE!	527.562	#VALUE!	#VALUE!
j	#VALUE!	663.511	#VALUE!	#VALUE!
j	#VALUE!	758.397	#VALUE!	#VALUE!
a	#VALUE!	893.844	#VALUE!	#VALUE!
s	#VALUE!	1.034.041	#VALUE!	#VALUE!
o	#VALUE!	1.169.889	#VALUE!	#VALUE!
n	#VALUE!	1.296.694	#VALUE!	#VALUE!
d	#VALUE!	1.559.212	#VALUE!	#VALUE!

evolutie 61 klasse

2008

	reële cijfers	trend	verschil in %	controle
j	445.166	229.211	94,2 ***	
f	675.064	461.029	46,4 ***	
m	819.201	797.322	2,7	
a	576.413	724.343	-20,4	
m	473.085	580.165	-18,5	
j	631.633	761.023	-17,0	
j	988.828	622.255	58,9 ***	
a	364.373	697.090	-47,7 ***	
s	864.924	610.872	41,6 ***	
o	565.022	798.821	-29,3	
n	486.363	613.070	-20,7	
d	1.413.881	1.201.617	17,7	
totaal	8.303.954	8.096.817	2,6	

	reële cijfers	trend	verschil in %	controle
j	445.166	229.211	94,2 ***	
f	1.120.230	690.240	62,3 ***	
m	1.939.431	1.487.562	30,4	
a	2.515.844	2.211.904	13,7	
m	2.988.929	2.792.069	7,1	
j	3.620.563	3.553.092	1,9	
j	4.609.390	4.175.347	10,4	
a	4.973.763	4.872.437	2,1	
s	5.838.687	5.483.309	6,5	
o	6.403.709	6.282.130	1,9	
n	6.890.073	6.895.200	-0,1	
d	8.303.954	8.096.817	2,6	

2009

	reële cijfers	trend	verschil in %	controle
j		262.547	#VALUE!	#VALUE!
f		494.364	#VALUE!	#VALUE!
m		830.657	#VALUE!	#VALUE!
a		757.678	#VALUE!	#VALUE!
m		613.500	#VALUE!	#VALUE!
j		794.358	#VALUE!	#VALUE!
j		655.591	#VALUE!	#VALUE!
a		730.426	#VALUE!	#VALUE!
s		644.208	#VALUE!	#VALUE!
o		832.156	#VALUE!	#VALUE!
n		646.406	#VALUE!	#VALUE!
d		1.234.952	#VALUE!	#VALUE!
totaal	0	8.496.845	-8.496.845	-100,0

	reële cijfers	trend	verschil in %	controle
j		262.547	#VALUE!	#VALUE!
f	#VALUE!	756.912	#VALUE!	#VALUE!
m	#VALUE!	1.587.569	#VALUE!	#VALUE!
a	#VALUE!	2.345.247	#VALUE!	#VALUE!
m	#VALUE!	2.958.747	#VALUE!	#VALUE!
j	#VALUE!	3.753.106	#VALUE!	#VALUE!
j	#VALUE!	4.408.696	#VALUE!	#VALUE!
a	#VALUE!	5.139.122	#VALUE!	#VALUE!
s	#VALUE!	5.783.330	#VALUE!	#VALUE!
o	#VALUE!	6.615.487	#VALUE!	#VALUE!
n	#VALUE!	7.261.893	#VALUE!	#VALUE!
d	#VALUE!	8.496.845	#VALUE!	#VALUE!

evolutie 62 klasse

2008

	reële cijfers	trend	verschil in %	controle
j	2.614.972	2.536.764	3,1	
f	1.662.053	1.638.153	1,5	
m	1.688.356	1.744.442	-3,2	
a	2.560.940	2.474.798	3,5	
m	1.671.638	1.743.184	-4,1	
j	1.731.416	1.765.223	-1,9	
j	1.823.367	1.766.942	3,2	
a	1.641.030	1.665.773	-1,5	
s	1.770.971	1.733.004	2,2	
o	1.716.648	1.739.061	-1,3	
n	2.336.802	2.279.800	2,5	
d	1.077.229	1.163.300	-7,4	
totaal	22.295.422	22.250.444	0,2	

	reële cijfers	trend	verschil in %	controle
j	2.614.972	2.536.764	3,1	
f	4.277.025	4.174.917	2,4	
m	5.965.381	5.919.359	0,8	
a	8.526.321	8.394.157	1,6	
m	10.197.959	10.137.341	0,6	
j	11.929.375	11.902.564	0,2	
j	13.752.742	13.669.506	0,6	
a	15.393.773	15.335.279	0,4	
s	17.164.743	17.068.283	0,6	
o	18.881.392	18.807.344	0,4	
n	21.218.193	21.087.145	0,6	
d	22.295.422	22.250.444	0,2	

2009

	reële cijfers	trend	verschil in %	controle
j		2.607.749	#VALUE!	#VALUE!
f		1.709.137	#VALUE!	#VALUE!
m		1.815.427	#VALUE!	#VALUE!
a		2.545.782	#VALUE!	#VALUE!
m		1.814.169	#VALUE!	#VALUE!
j		1.836.207	#VALUE!	#VALUE!
j		1.837.927	#VALUE!	#VALUE!
a		1.736.758	#VALUE!	#VALUE!
s		1.803.989	#VALUE!	#VALUE!
o		1.810.045	#VALUE!	#VALUE!
n		2.350.785	#VALUE!	#VALUE!
d		1.234.284	#VALUE!	#VALUE!
totaal	0	23.102.258	-23.102.258	-100,0

	reële cijfers	trend	verschil in %	controle
j		2.607.749	#VALUE!	#VALUE!
f	#VALUE!	4.316.886	#VALUE!	#VALUE!
m	#VALUE!	6.132.313	#VALUE!	#VALUE!
a	#VALUE!	8.678.095	#VALUE!	#VALUE!
m	#VALUE!	10.492.264	#VALUE!	#VALUE!
j	#VALUE!	12.328.471	#VALUE!	#VALUE!
j	#VALUE!	14.166.398	#VALUE!	#VALUE!
a	#VALUE!	15.903.155	#VALUE!	#VALUE!
s	#VALUE!	17.707.144	#VALUE!	#VALUE!
o	#VALUE!	19.517.189	#VALUE!	#VALUE!
n	#VALUE!	21.867.974	#VALUE!	#VALUE!
d	#VALUE!	23.102.258	#VALUE!	#VALUE!

evolutie 63 klasse

2008

	reële cijfers	trend	verschil in %	controle
j	2.021.308	1.574.119	28,4	
f	1.228.537	961.475	27,8	
m	1.712.790	1.638.183	4,6	
a	1.023.074	1.391.510	-26,5	
m	1.608.223	1.138.915	41,2 ***	
j	1.418.932	1.280.685	10,8	
j	1.606.836	2.051.901	-21,7	
a	1.467.628	1.255.639	16,9	
s	1.203.482	931.084	29,3	
o	672.376	921.001	-27,0	
n	222.574	702.308	-68,3 ***	
d	2.262.877	1.974.743	14,6	
totaal	16.448.638	15.821.563	4,0	

	cumulatief	reële cijfers	trend	verschil in %	controle
j		2.021.308	1.574.119	28,4	
f		3.249.845	2.535.594	28,2	
m		4.962.635	4.173.777	18,9	
a		5.985.709	5.565.286	7,6	
m		7.593.932	6.704.202	13,3	
j		9.012.864	7.984.887	12,9	
j		10.619.700	10.036.788	5,8	
a		12.087.329	11.292.427	7,0	
s		13.290.811	12.223.511	8,7	
o		13.963.186	13.144.512	6,2	
n		14.185.761	13.846.820	2,4	
d		16.448.638	15.821.563	4,0	

2009

	reële cijfers	trend	verschil in %	controle
j		1.624.469	#VALUE!	#VALUE!
f		1.011.824	#VALUE!	#VALUE!
m		1.688.533	#VALUE!	#VALUE!
a		1.441.859	#VALUE!	#VALUE!
m		1.189.265	#VALUE!	#VALUE!
j		1.331.035	#VALUE!	#VALUE!
j		2.102.251	#VALUE!	#VALUE!
a		1.305.989	#VALUE!	#VALUE!
s		981.433	#VALUE!	#VALUE!
o		971.351	#VALUE!	#VALUE!
n		752.658	#VALUE!	#VALUE!
d		2.025.092	#VALUE!	#VALUE!
totaal	0	16.425.758	-16.425.758	-100,0

	cumulatief	reële cijfers	trend	verschil in %	controle
j			1.624.469	#VALUE!	#VALUE!
f		#VALUE!	2.636.293	#VALUE!	#VALUE!
m		#VALUE!	4.324.826	#VALUE!	#VALUE!
a		#VALUE!	5.766.685	#VALUE!	#VALUE!
m		#VALUE!	6.955.950	#VALUE!	#VALUE!
j		#VALUE!	8.286.984	#VALUE!	#VALUE!
j		#VALUE!	10.389.235	#VALUE!	#VALUE!
a		#VALUE!	11.695.224	#VALUE!	#VALUE!
s		#VALUE!	12.676.657	#VALUE!	#VALUE!
o		#VALUE!	13.648.008	#VALUE!	#VALUE!
n		#VALUE!	14.400.666	#VALUE!	#VALUE!
d		#VALUE!	16.425.758	#VALUE!	#VALUE!

evolutie 64 klasse

2008

	reële cijfers	trend	verschil in %	controle
j	118.846	133.474	-11,0	
f	292.280	283.002	3,3	
m	659.747	626.064	5,4	
a	384.343	497.316	-22,7	
m	396.710	415.709	-4,6	
j	396.729	464.213	-14,5	
j	573.223	585.320	-2,1	
a	297.539	331.462	-10,2	
s	262.097	292.361	-10,4	
o	734.031	573.018	28,1	
n	285.601	282.608	1,1	
d	1.330.458	1.235.147	7,7	
totaal	5.731.604	5.719.695	0,2	

	reële cijfers	trend	verschil in %	controle
j	118.846	133.474	-11,0	
f	411.125	416.475	-1,3	
m	1.070.872	1.042.539	2,7	
a	1.455.215	1.539.856	-5,5	
m	1.851.925	1.955.564	-5,3	
j	2.248.655	2.419.778	-7,1	
j	2.821.877	3.005.098	-6,1	
a	3.119.417	3.336.560	-6,5	
s	3.381.514	3.628.921	-6,8	
o	4.115.545	4.201.939	-2,1	
n	4.401.146	4.484.547	-1,9	
d	5.731.604	5.719.695	0,2	

2009

	reële cijfers	trend	verschil in %	controle
j		146.956	#VALUE!	#VALUE!
f		296.484	#VALUE!	#VALUE!
m		639.546	#VALUE!	#VALUE!
a		510.799	#VALUE!	#VALUE!
m		429.191	#VALUE!	#VALUE!
j		477.696	#VALUE!	#VALUE!
j		598.803	#VALUE!	#VALUE!
a		344.944	#VALUE!	#VALUE!
s		305.843	#VALUE!	#VALUE!
o		586.500	#VALUE!	#VALUE!
n		296.090	#VALUE!	#VALUE!
d		1.248.630	#VALUE!	#VALUE!
totaal	0	5.881.482	-5.881.482	-100,0

	reële cijfers	trend	verschil in %	controle
j		146.956	#VALUE!	#VALUE!
f	#VALUE!	443.440	#VALUE!	#VALUE!
m	#VALUE!	1.082.986	#VALUE!	#VALUE!
a	#VALUE!	1.593.785	#VALUE!	#VALUE!
m	#VALUE!	2.022.976	#VALUE!	#VALUE!
j	#VALUE!	2.500.671	#VALUE!	#VALUE!
j	#VALUE!	3.099.474	#VALUE!	#VALUE!
a	#VALUE!	3.444.419	#VALUE!	#VALUE!
s	#VALUE!	3.750.262	#VALUE!	#VALUE!
o	#VALUE!	4.336.762	#VALUE!	#VALUE!
n	#VALUE!	4.632.852	#VALUE!	#VALUE!
d	#VALUE!	5.881.482	#VALUE!	#VALUE!

evolutie 65 klasse

2008

	reële cijfers	trend	verschil in %	controle
j	76.518	89.926	-14,9	
f	156.862	194.844	-19,5	
m	155.829	161.609	-3,6	
a	311.591	262.929	18,5	
m	139.942	182.083	-23,1	
j	143.342	260.548	-45,0 ***	
j	470.700	380.384	23,7	
a	137.227	205.979	-33,4	
s	103.375	142.029	-27,2	
o	368.722	290.202	27,1	
n	136.756	159.343	-14,2	
d	929.405	814.975	14,0	
totaal	3.130.271	3.144.851	-0,5	

cumulatief	reële cijfers	trend	verschil in %	controle
j	76.518	89.926	-14,9	
f	233.381	284.770	-18,0	
m	389.210	446.379	-12,8	
a	700.801	709.308	-1,2	
m	840.743	891.391	-5,7	
j	984.086	1.151.939	-14,6	
j	1.454.786	1.532.323	-5,1	
a	1.592.013	1.738.302	-8,4	
s	1.695.388	1.880.331	-9,8	
o	2.064.111	2.170.533	-4,9	
n	2.200.866	2.329.876	-5,5	
d	3.130.271	3.144.851	-0,5	

2009

	reële cijfers	trend	verschil in %	controle
j		107.726	#VALUE!	#VALUE!
f		212.645	#VALUE!	#VALUE!
m		179.410	#VALUE!	#VALUE!
a		280.729	#VALUE!	#VALUE!
m		199.883	#VALUE!	#VALUE!
j		278.349	#VALUE!	#VALUE!
j		398.185	#VALUE!	#VALUE!
a		223.780	#VALUE!	#VALUE!
s		159.830	#VALUE!	#VALUE!
o		308.002	#VALUE!	#VALUE!
n		177.143	#VALUE!	#VALUE!
d		832.776	#VALUE!	#VALUE!
totaal	0	3.358.457	-3.358.457	-100,0

cumulatief	reële cijfers	trend	verschil in %	controle
j		107.726	#VALUE!	#VALUE!
f	#VALUE!	320.371	#VALUE!	#VALUE!
m	#VALUE!	499.781	#VALUE!	#VALUE!
a	#VALUE!	780.510	#VALUE!	#VALUE!
m	#VALUE!	980.393	#VALUE!	#VALUE!
j	#VALUE!	1.258.742	#VALUE!	#VALUE!
j	#VALUE!	1.656.926	#VALUE!	#VALUE!
a	#VALUE!	1.880.706	#VALUE!	#VALUE!
s	#VALUE!	2.040.536	#VALUE!	#VALUE!
o	#VALUE!	2.348.538	#VALUE!	#VALUE!
n	#VALUE!	2.525.681	#VALUE!	#VALUE!
d	#VALUE!	3.358.457	#VALUE!	#VALUE!



BDO Atrio
AuditorsAccountantsAdvisors

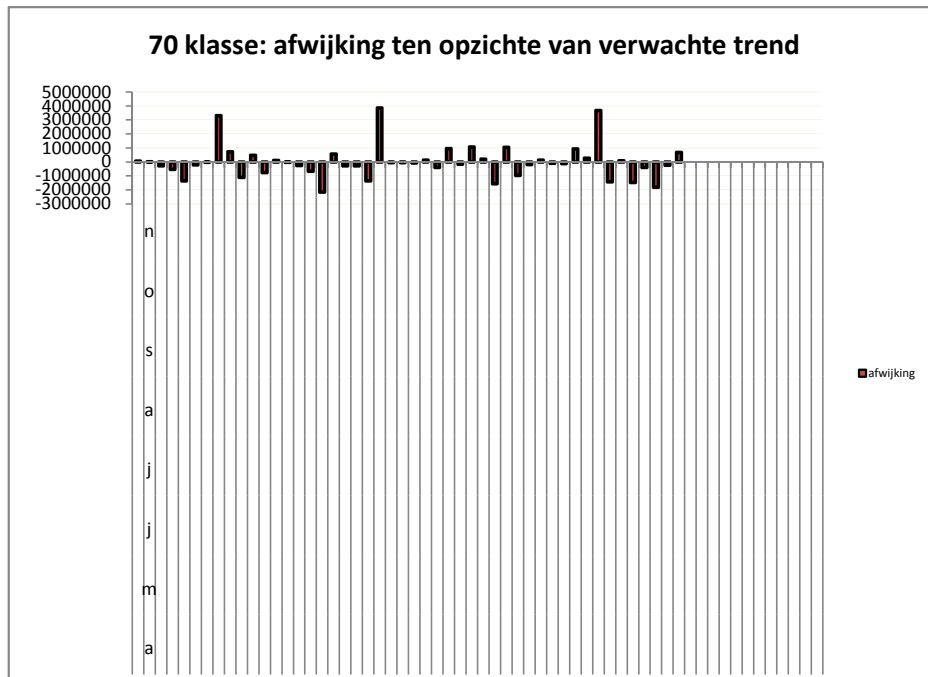
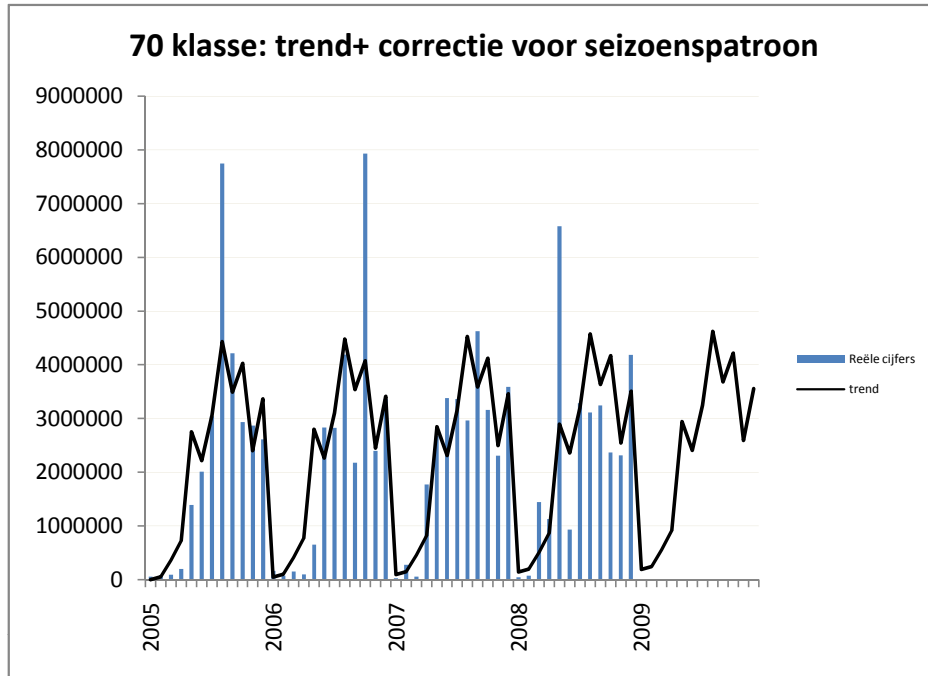
TRENDBEREKENING

GRAFIEKEN

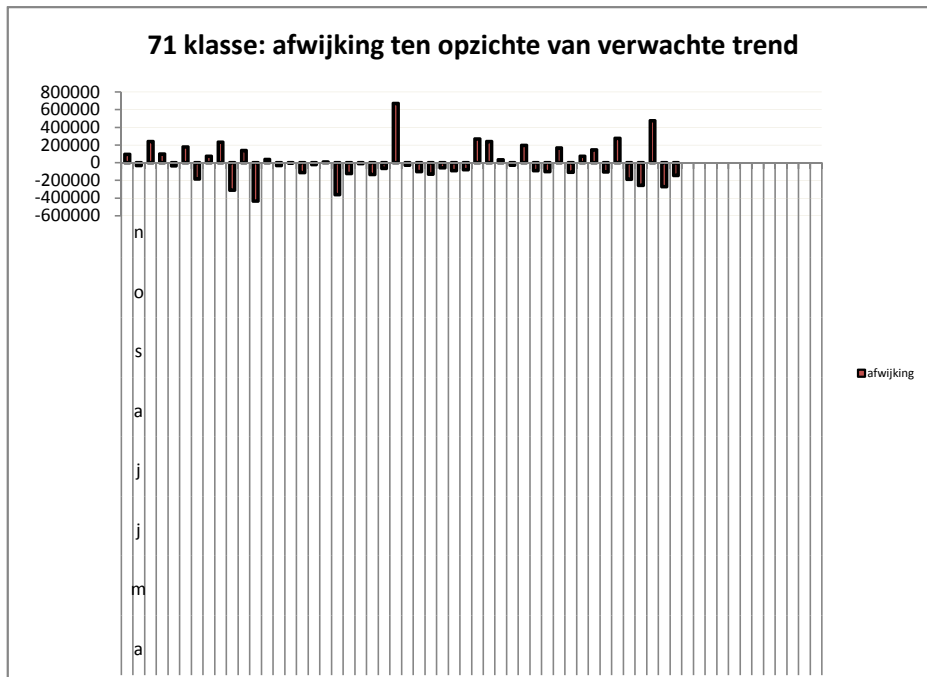
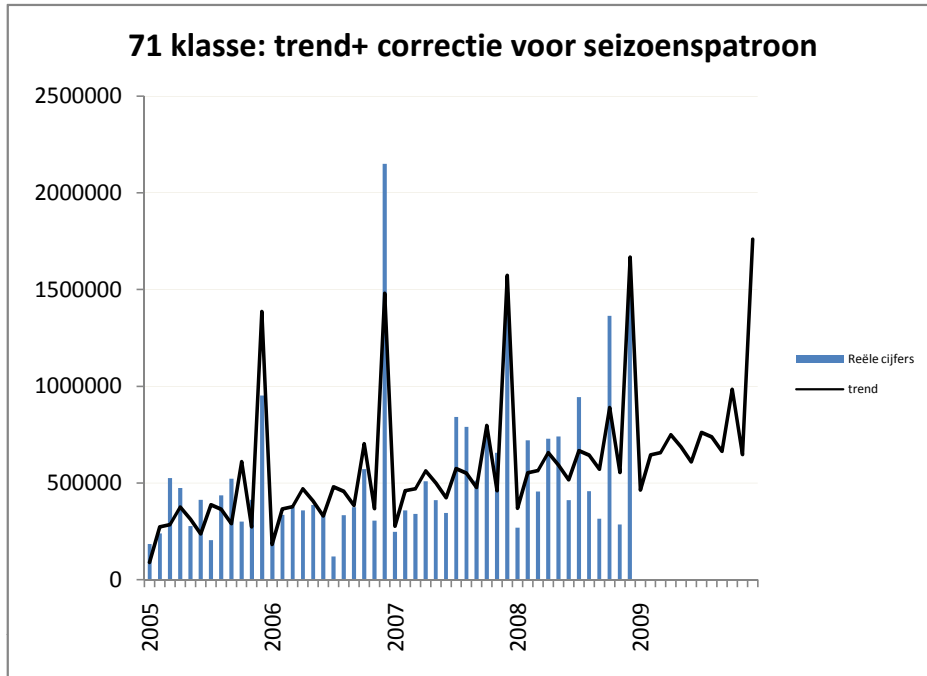
trend met seizoenscorrectie

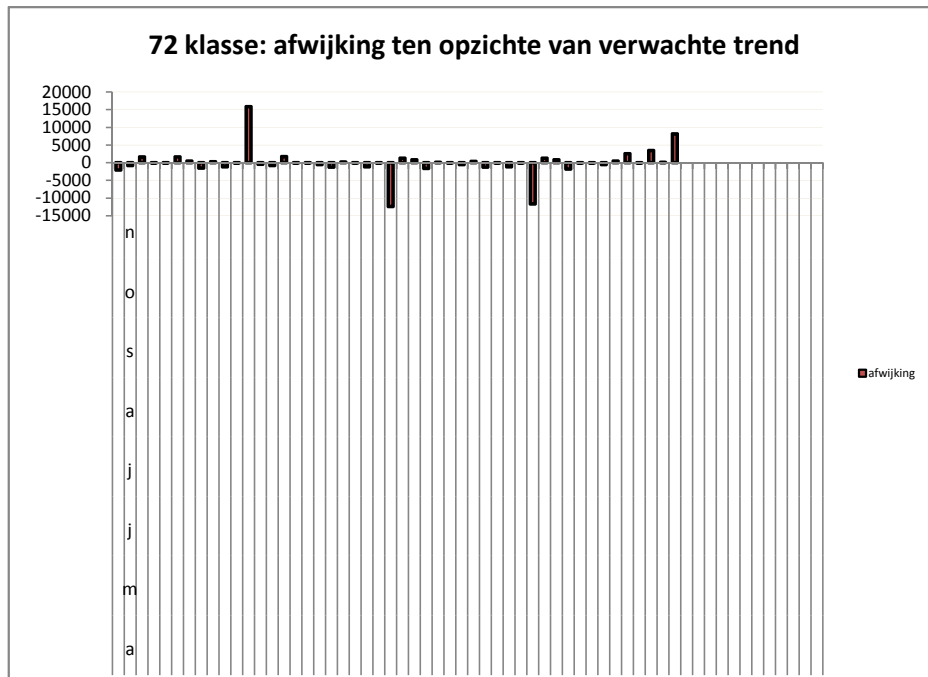
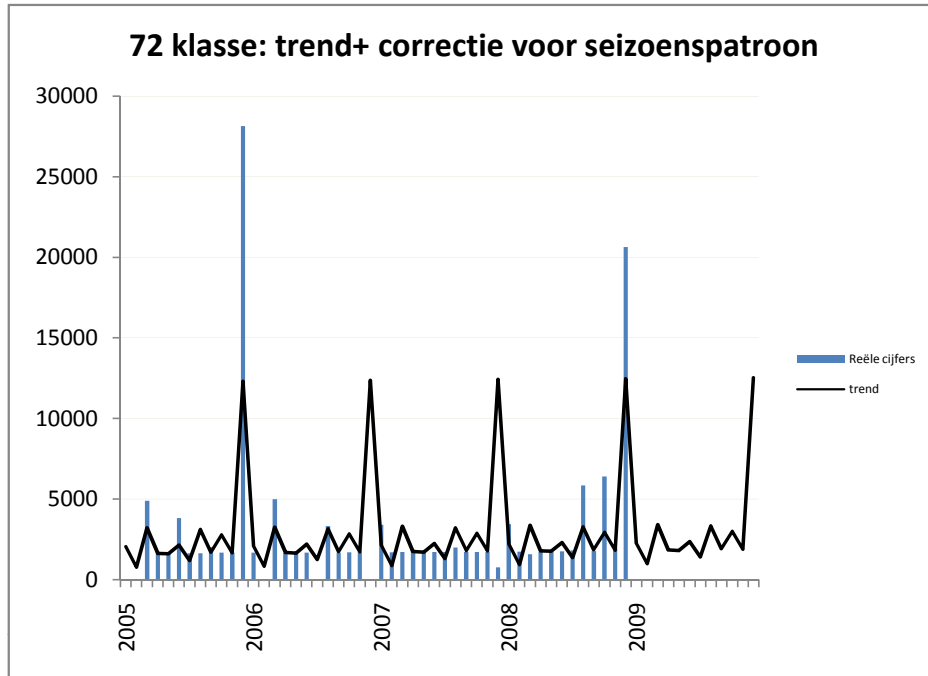
periode 2005 - 2009

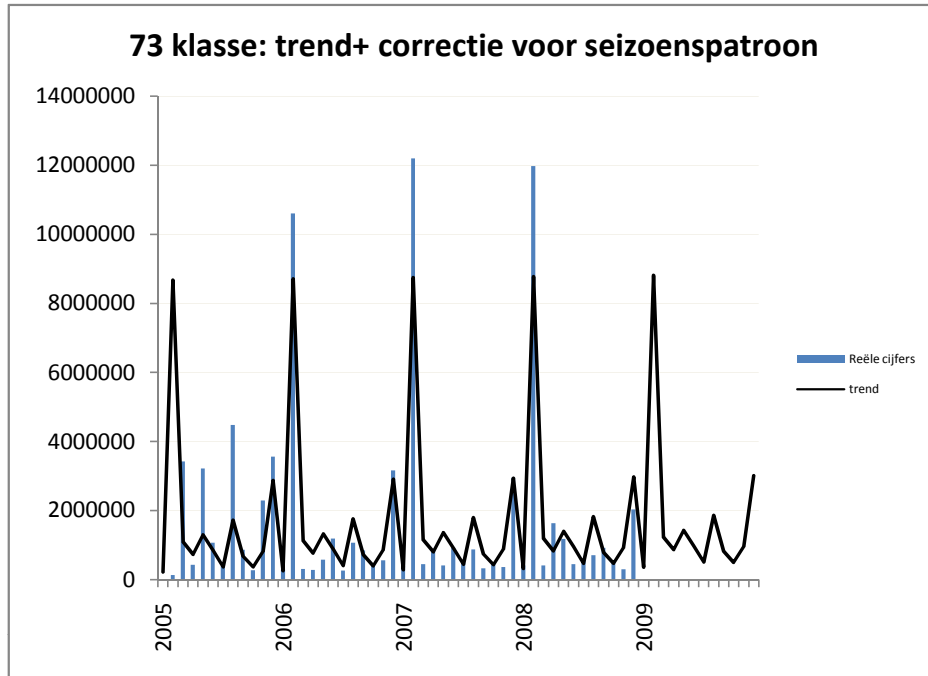
In de onderste grafieken wordt het verschil weergegeven tussen de verwachte waarde (= trend) en de echte, reële cijfers. Indien dit verschil groot is, dient deze rekening verder uitgepluist te worden: welke factoren hebben in die maand geleid tot een afwijking van het verwachte patroon?

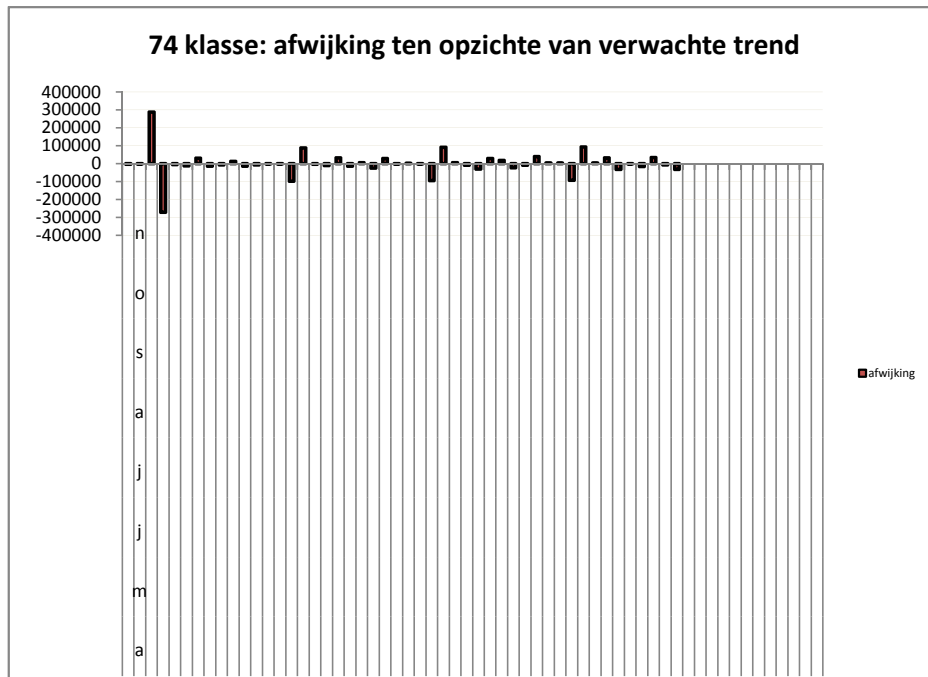
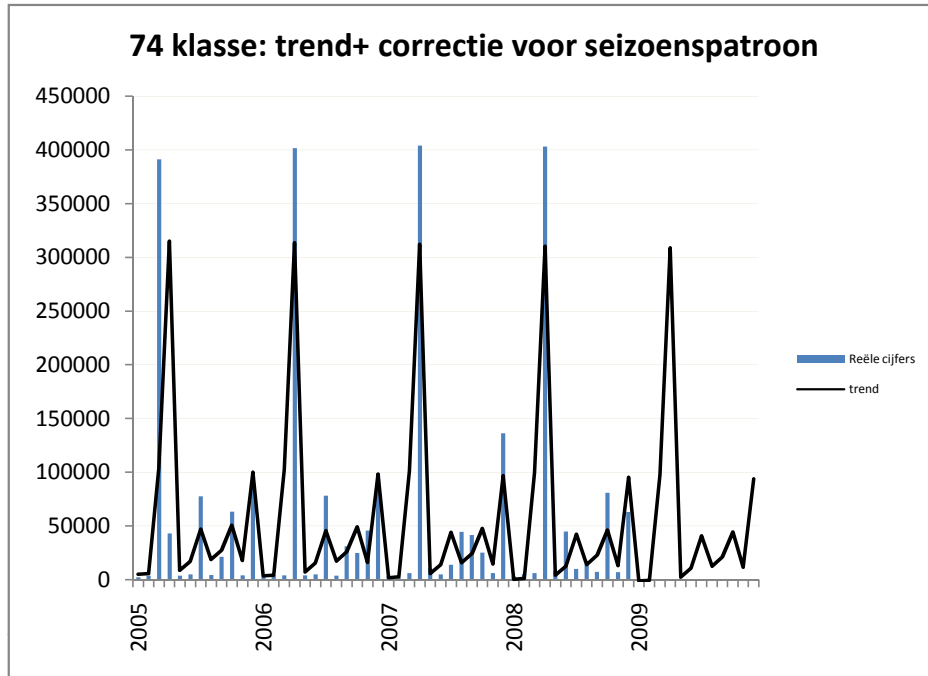


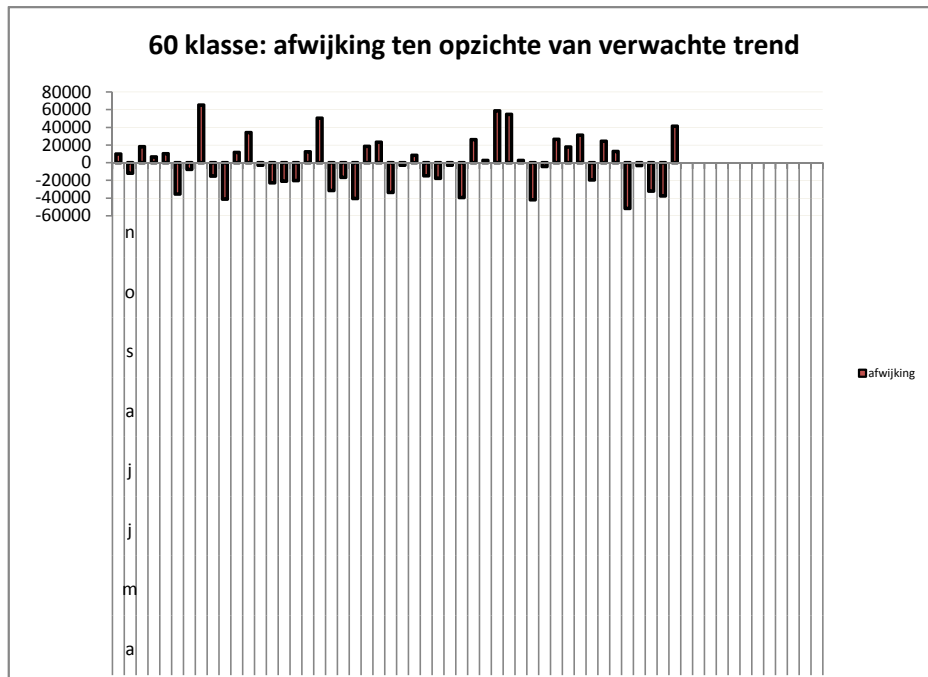
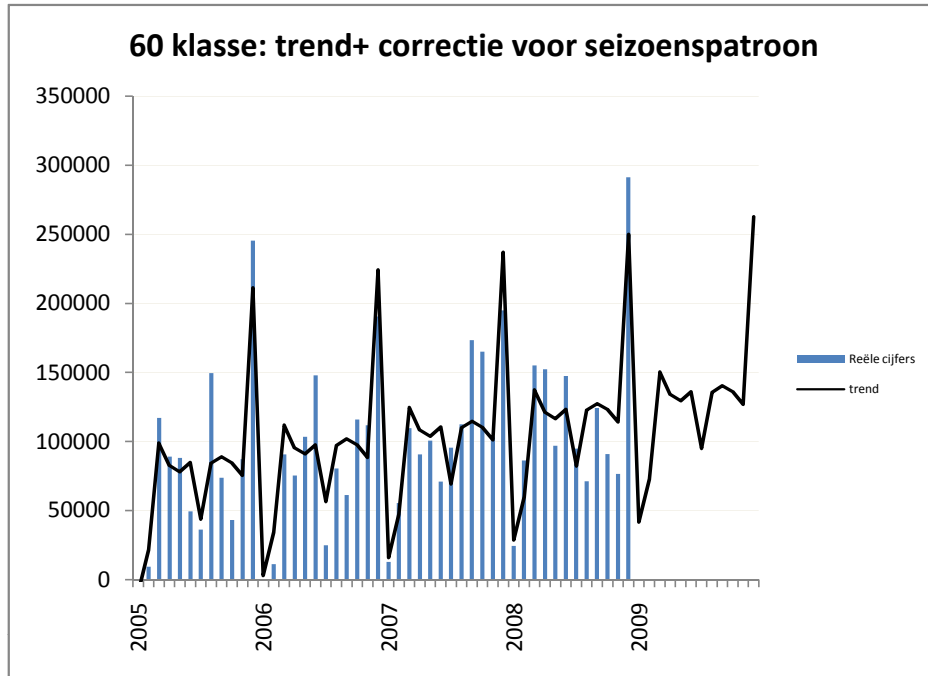
evolutie 71 klasse



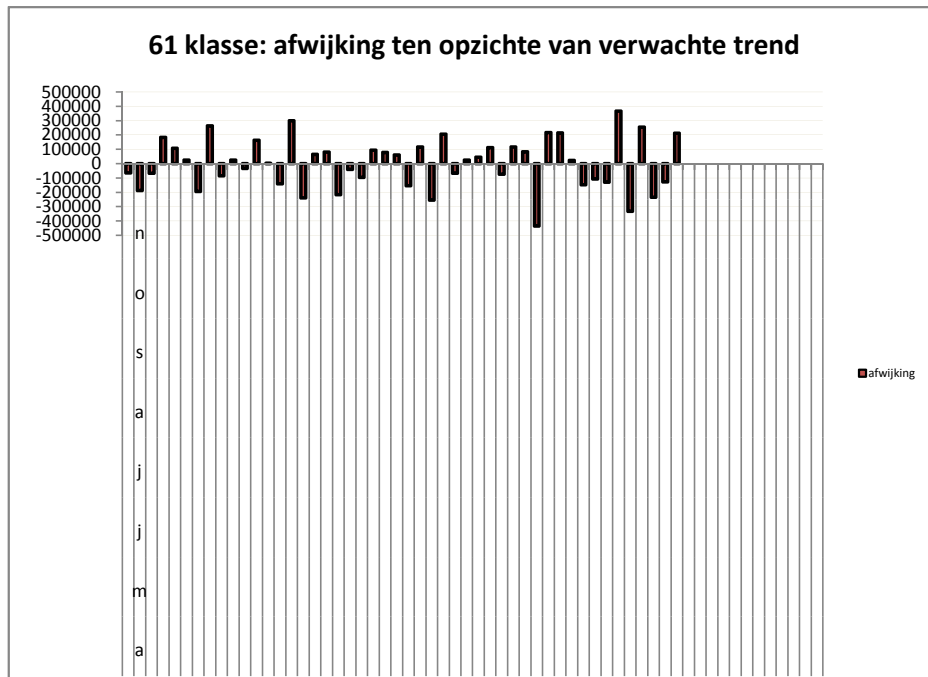
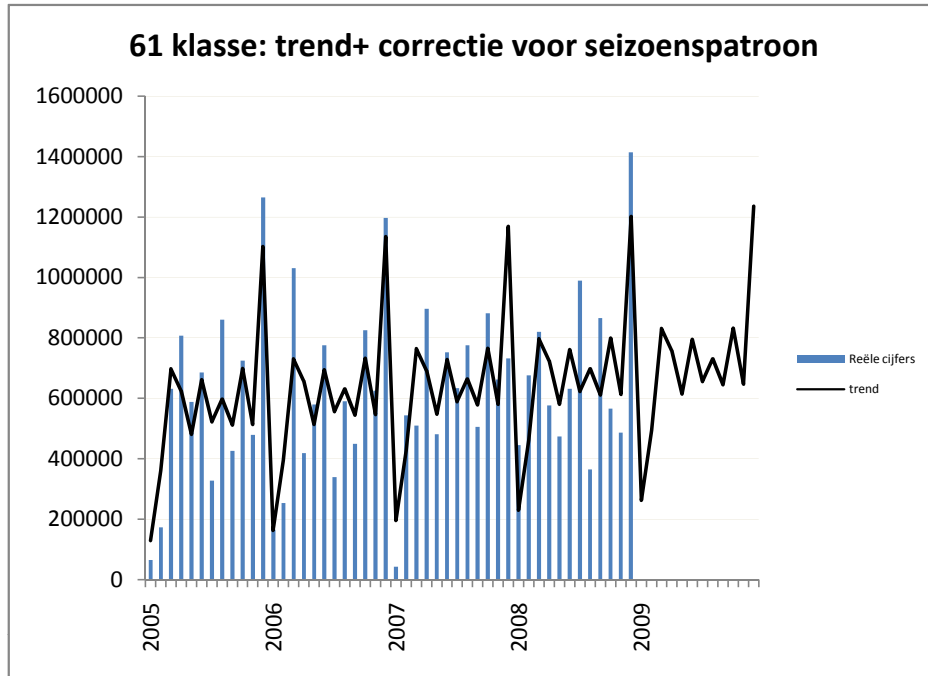




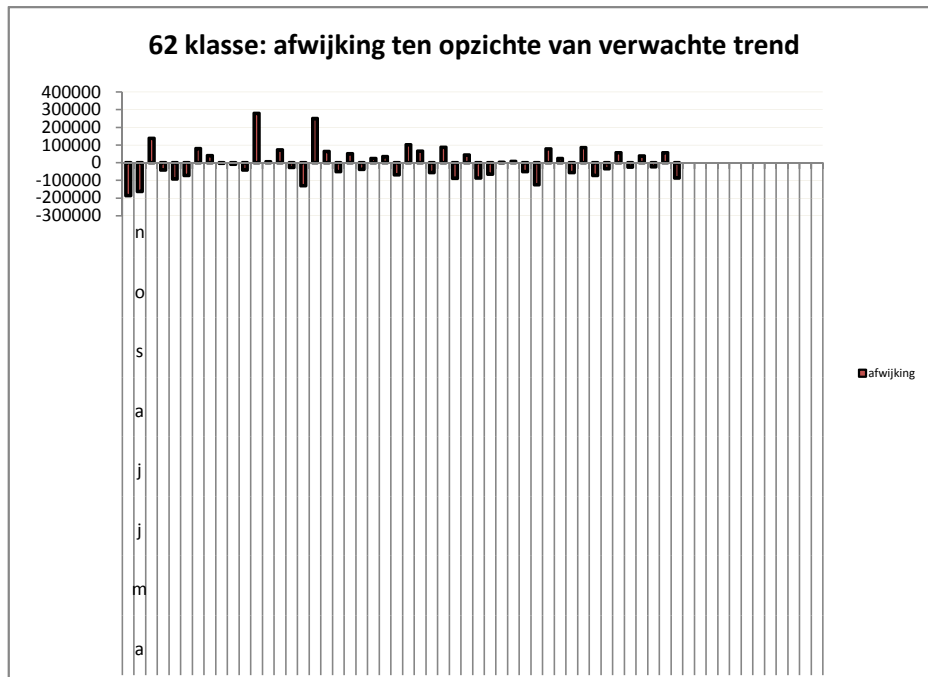
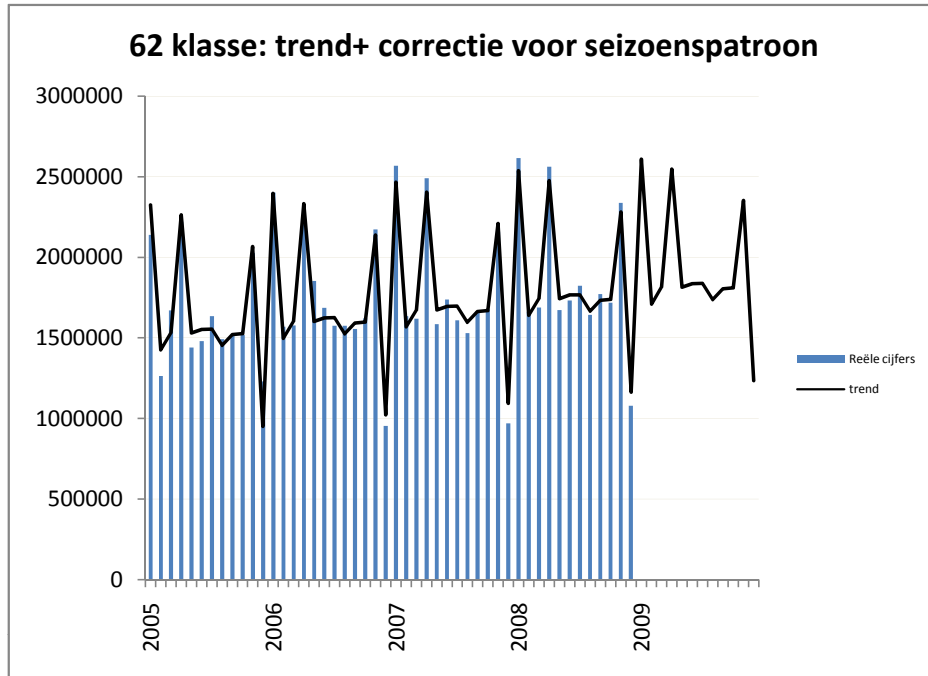




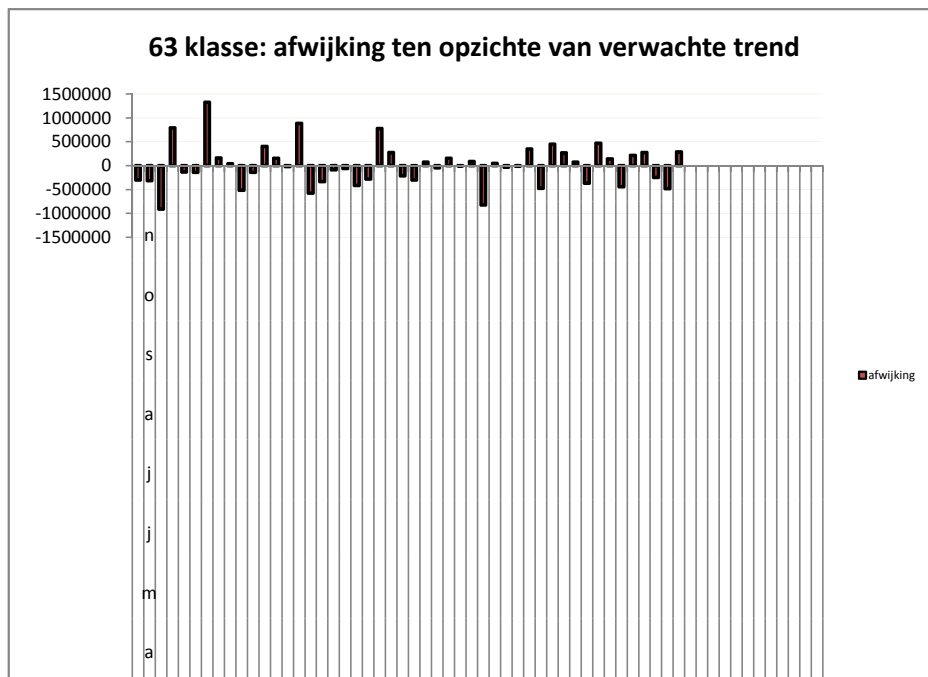
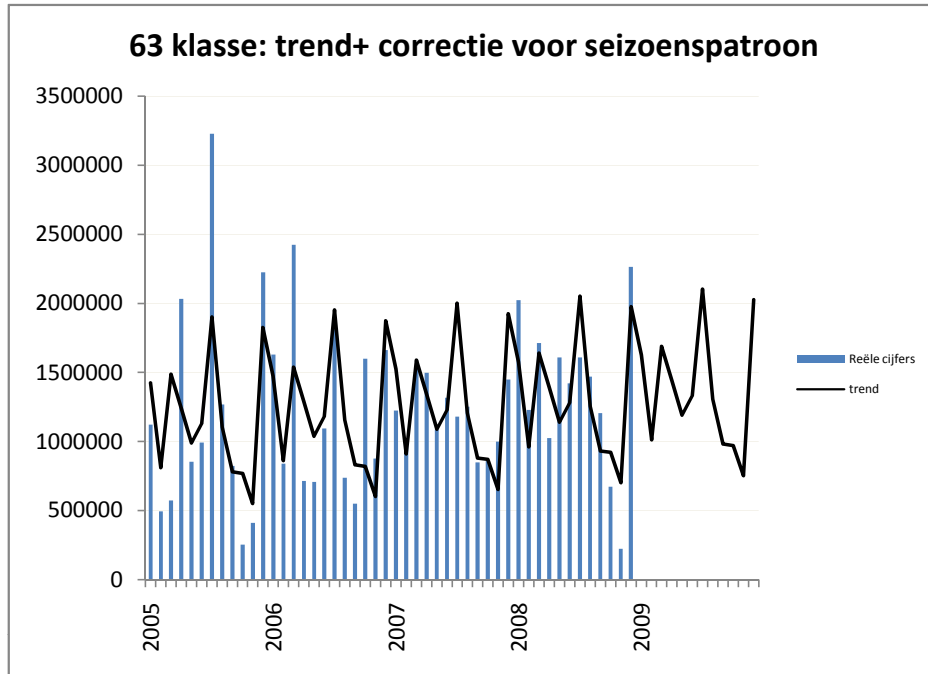
evolutie 61 klasse

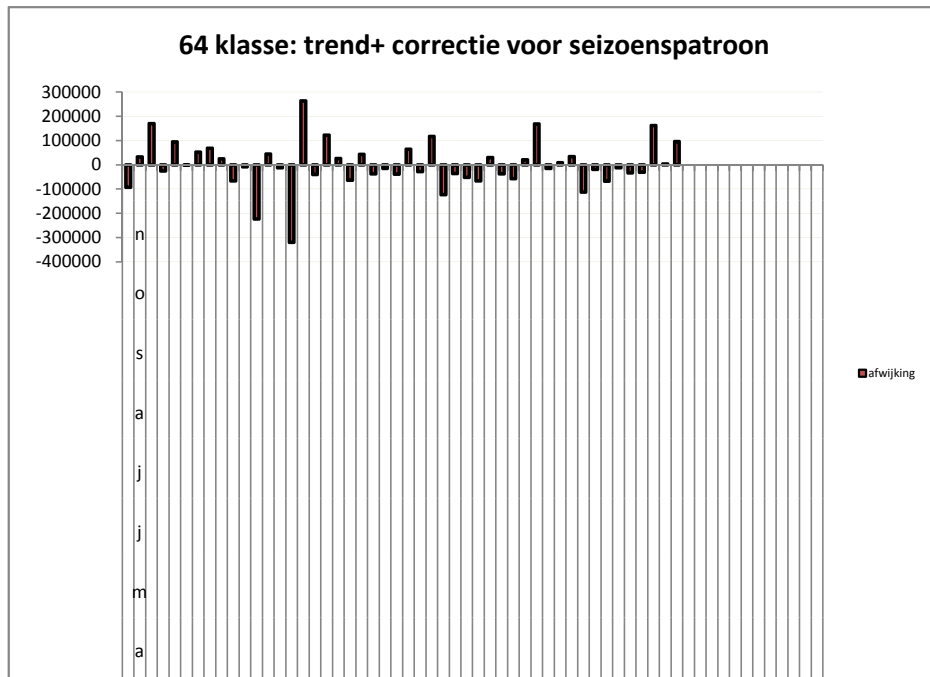
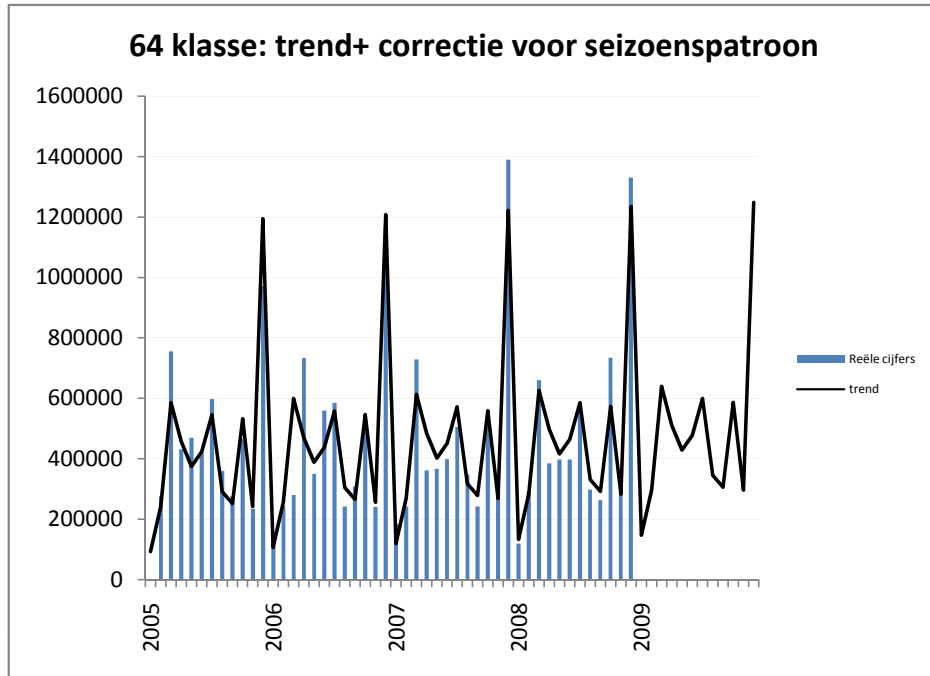


evolutie 62 klasse



evolutie 63 klasse





evolutie 65 klasse

